

TECHNICAL MANUAL

ORGANIZATIONAL, DIRECT SUPPORT, AND GENERAL

SUPPORT MAINTENANCE REPAIR PARTS

AND SPECIAL TOOLS LISTS

(INCLUDING DEPOT MAINTENANCE

REPAIR PARTS AND SPECIAL TOOLS)

TELEPHONE TERMINAL AN/FTA-15A

(FSN 5805-066-3808)

HEADQUARTERS, DEPARTMENT OF THE ARMY

MARCH 1975

TECHNICAL MANUAL }
 No. 11-5805-347-24P }

**HEADQUARTERS
 DEPARTMENT OF THE ARMY
 WASHINGTON, D. C., 28 March 1975**

**Organizational, Direct Support, and General
 Support Maintenance Repair Parts and Special
 Tools Lists (Including Depot Maintenance
 Repair Parts and Special Tools)
 TELEPHONE TERMINAL AN/ FTA-15A
 (FSN 5805-066-3808)**

Current as of December 1974

SECTION	Paragraph	Page
I. INTRODUCTION		
Scope	1-1	1
General	1-2	1
Explanation of columns	1-3	1
Special information	1-4	3
Location of repair parts	1-5	3
Abbreviations (Not applicable)	1-6	4
Reporting of equipment publication improvements	1-7	4
II. PRESCRIBED LOAD ALLOWANCE (Not applicable)		
III. REPAIR PARTS LIST		6
IV. SPECIAL TOOLS, TEST AND SUPPORT EQUIPMENT (Not applicable)		
V. REPAIR PARTS LIST		8
VI. SPECIAL TOOLS, TEST AND SUPPORT (Not Applicable).....		
VII. INDEX-FEDERAL STOCK AND REFERENCE NUMBER CROSS REFERENCE TO FIGURE AND ITEM		45

***This manual supersedes TM 11-5805-347-20P, 5 January 1965 and TM 11-5805-347-26P, 11 September 1964.**

SECTION I
INTRODUCTION

1-1 Scope

This manual lists repair parts and special tools required for the performance of organizational, direct support, general support, and depot maintenance of the AN/FTA-15A. The PCCN for AN/FTA-15A is GCWANX for all models.

1-2 General

This repair parts and special tools list is divided into the following sections:

a. Prescribed Load Allowance (PLA)

Section II. Not applicable

b. Repair Parts List—Section III. A list of repair parts authorized for the performance of maintenance at the organizational level. This repair parts list is arranged in alphabetical order.

c. Special Tools, Test and Support Equipment—Section IV. Not applicable.

d. Repair Parts List—Section V. A list of repair parts authorized for the performance of maintenance at the direct support, general support, and depot level.

e. Special Tools, Test and Support Equipment—Section VI. Not applicable.

f. Index—Federal Stock Number and Reference Number Cross-Reference to Figure and Item Number—Section VII. A list, in ascending numerical sequence, of all Federal stock numbers appearing in the listings, followed by a list, in alphanumeric sequence, of all reference numbers appearing in the listings. Federal stock number and reference numbers are cross-referenced to each illustration figure and item number or reference designation appearance.

1-3 Explanation of Columns

The following provides an explanation of columns found in the tabular list.

a. Source, Maintenance, and Recoverability Codes (SMR).

(1) Source code. Indicates the manner of acquiring support items for maintenance, repair, or overhaul of end items. Source codes are—

<i>Code</i>	<i>Explanation</i>
PA	Item procured and stocked for anticipated or known usage.
PB	Item procured and stocked for insurance purposes because essentiality dictates that a minimum quantity be available in the supply systems.

<i>Code</i>	<i>Explanation</i>
PC	Item procured and stocked and which otherwise would be coded PA except that it is deteriorative in nature.
PD	Support item, excluding support equipment, procured for initial issue or outfitting and stocked only for subsequent or additional initial issues or outfittings. Not subject to automatic replenishment.
PE	Support equipment procured and stocked for initial issue or outfitting to specified maintenance repair activities.
PF	Support equipment which will not be stocked but which will be centrally procured on demand.
PG	Item procured and stocked to provide for sustained support for the life of the equipment. It is applied to an item peculiar to the equipment which because of probable discontinuance or shutdown of production facilities would prove uneconomical to reproduce at a later time.
KD	An item of depot overhaul/repair kit and not purchased separately. Depot kit defined as a kit that provides items required at the time of overhaul or repair.
KF	An item of a maintenance kit and not purchased separately. Maintenance kit defined as a kit that provides an item that can be replaced at organizational or direct support or general support levels of maintenance.
KB	Item included in both a depot overhaul/repair kit and a maintenance kit.
MO	Item to be manufactured or fabricated at organizational level.
MF	Item to be manufactured or fabricated at direct support maintenance level.
MH	Item to be manufactured or fabricated at general support maintenance level.
MD	Item to be manufactured or fabricated at depot maintenance level.
AO	Item to be assembled at organizational level.
AF	Item to be assembled at direct support maintenance level.
AH	Item to be assembled at general support maintenance level.
AD	Item to be assembled at depot maintenance level.

<i>Code</i>	<i>Explanation</i>
XA	Item is not procured or stocked because the requirements for the item will result in the replacement of the next higher assembly.
XB	Item is not procured or stocked. If not available through salvage, requisition.
XC	Installation drawing, diagram instruction sheet, field service drawing, that is identified by manufacturers' part number.
XD	Support items can be requisitioned with justification.

NOTE

Cannibalization or salvage may be used as a source of supply for any items source coded above except those coded XA and aircraft support items as restricted by AR 700-42.

(2) *Maintenance code.* Maintenance codes are assigned to indicate the levels of maintenance authorized to USE and REPAIR support items. The maintenance codes are entered in the third and fourth positions of the Uniform SMR Code Format as follows—

(a) *Use (third position).* The maintenance code entered in the third position indicates the lowest maintenance level authorized to remove, replace, and use the support item. The maintenance code entered in the third position indicates one of the following levels of maintenance.

<i>Code</i>	<i>Application/Explanation</i>
O	Support item is removed, replaced, used at the organizational level of maintenance.

NOTE

A code "C" may be used in this position to denote crew or operator maintenance performed within organizational maintenance.

F	Support item is removed, replaced, used at the direct support maintenance level.
H	Support item is removed, replaced, used at the general support maintenance.
D	Support items that are removed, replaced, used at depot only.

(b) *Repair (fourth position).* The maintenance code entered in the fourth position indicates whether the item is to be repaired and identifies the lowest maintenance level with the capability to perform complete repair (i.e., all authorized maintenance functions). When a maintenance code is not used a dash (-) sign is entered. For multi-service equipment/systems or when a code is entered, this position will contain one of the following maintenance codes as assigned by the service(s) that require the code—

<i>Code</i>	<i>Application/Explanation</i>
O	The lowest maintenance level capable of complete repair of the support item is the organizational level.
F	The lowest maintenance level capable of complete repair of the support item is direct support.
H	The lowest maintenance level capable of complete repair of the support item is general support.
D	The lowest maintenance level capable of complete repair of the support item is the depot level.
L	Repair restricted to designated Specialized Repair Activity.
Z	Non-repairable. No repair is authorized.
B	No repair is authorized. The item may be reconditioned by adjusting, lubricating, etc., at the user level. No parts or special tools are procured for the maintenance of this item.

(3) *Recoverability code.* Recoverability codes are assigned to support items to indicate the disposition action on unserviceable items. The recoverability code is entered in the fifth position of the uniform SMR Code Format as follows—

<i>Code</i>	<i>Explanation</i>
Z	Nonrepairable item. When unserviceable, condemn and dispose at the level indicated in the first digit of the maintenance code.
O	Repairable item. When uneconomically repairable, condemn and dispose at organizational level.
F	Repairable item. When uneconomically repairable, condemn and dispose at the direct support level.
H	Repairable item. When uneconomically repairable, condemn and dispose at the general support level.
D	Repairable item. When beyond lower level repair capability, return to depot. Condemnation and disposal not authorized below depot level.
L	Repairable item. Repair, condemnation, and disposal not authorized below depot/ Specialized Repair Activity level.
A	Item requires special handling or condemnation procedures because of specific reasons (i.e., precious metal content, high dollar value, critical material or hazardous material).

b. *Federal Stock Number.* Indicates the Federal stock number assigned to the item.

NOTE

For requisitioning purposes, the Federal

stock number must be converted to the National stock number by adding "-00-" after the Federal stock classification (FSC) code (first four digits). For example, FSN 6625-553-0142 converts to NSN 6625-00-553-0142.

c. Description. Indicates the Federal item name and a minimum description required to identify the item. The last line indicates the reference number followed by the applicable Federal Supply Code for Manufacturer (FSCM) in parentheses. The FSCM is used as an element in item identification to designate manufacturer or distributor or Government agency, etc., and is identified in SB 708-42.

d. Unit of Measure (U/M). Indicates the standard or basic quantity by which the listed item is used in performing the actual maintenance function. This measure is expressed by a two-character alphabetical abbreviation; e.g., ea, in, pr, etc., and is the basis used to indicate quantities and allowances in subsequent columns. When the unit of measure differs from the unit of issue, the lowest unit of issue that will satisfy the required units of measure will be requisitioned.

e. Quantity Incorporated in Unit. This column indicates the quantity of the item used in the equipment. Subsequent appearances of the same item in the same assembly are indicated by the letters "REF".

f. 15-Day Organizational Maintenance Allowances.

(1) The repair parts indicated by an asterisk in the allowance column represent those authorized for use at the organizational category, and will be requisitioned on an "as required" basis, until stockage is based on demand in accordance with AR 710-2.

(2) Major Army commanders are authorized to approve reduction in the range of support items authorized for use in units within their commands. Recommendations for increase in range of items authorized for use will be forwarded to Commander, US Army Electronics Command, ATTN: AMSEL-MA-CW, Fort Monmouth, N.J., 07703.

(3) Allowance quantities are indicated in the special tools list section for special tools, TMDE, and other support equipment.

g. 30-Day DS/GS Maintenance Allowances.

NOTE

Allowances in GS column are for GS maintenance only.

(1) The repair parts indicated by asterisk entries in separate allowance columns for DS and GS represent those authorized for use at that

category of maintenance to be requisitioned on an "as required" basis, until stockage is based on demand in accordance with AR 710-2.

(2) Allowance quantities are indicated in the special tool lists section for special tools, TMDE, and other support equipment.

h. 1-Year Allowances Per 100 Equipments/Contingency Planning Purposes. Column intentionally left blank.

i. Depot Maintenance Allowance Per 100 Equipments. This column indicates opposite the first appearance of each item the total quantity authorized for depot maintenance of 100 equipments.

j. Illustration.

(1) **Figure** Indicates the figure number of the illustration on which the item is shown in TM 11-5805-347-15.

(2) **Item Number.** Indicates the item number or reference designation used to reference the item in the illustration.

1-4 Special Information

a. Usable on codes are included in column 3. Uncoded items are applicable to all models. Identification of the usable on codes used in this publication are—

<i>Code</i>	<i>Used on</i>
BYD	AN/FTA-15A

b. The following publication pertains to the AN/FTA-15A and its components:

TM 11-5805-347-15 Operator's, Organizational, DS, GS, and Depot Maintenance Manual: Telephone Terminal AN/FTA-15A.

1-5 Location of Repair Parts

a. This manual contains one cross-reference index (sec VII) to be used to locate a repair part when either the Federal stock number or reference number (manufacturer's part number) is known. The first column in the index is prepared in numerical or alphanumeric sequence in ascending order. The reference numbers (manufacturer's part numbers) are listed immediately following the last listed Federal stock number in the index of Federal stock numbers.

b. When the Federal stock number or reference number is known, follow the procedures given in (1) and (2) below.

(1) Refer to the index of Federal stock numbers (sec VII), and locate the Federal stock number or reference number. The FSN and reference number are cross-referenced to the applicable figure and item number or reference designation.

(2) Refer to the repair parts list (sec III and V) and locate the figure number (col 7a-20P, 10a-34P) and item number or reference designation (col 7b-20P, 10b-34P) as noted in the FSN index.

c. When the figure and item number or reference designation are known, scrutinize columns 7a and 7b-20P and 10a and 10b-34P, of the repair parts list (sec III and V) until the item is located.

d. When the FSN, reference number, figure number, and item number are not known, scrutinize column 3 of the repair parts list (sec III and V), which is arranged in alphabetical order.

1-6. Abbreviation

Not applicable.

1-7. Reporting of Equipment Publication Improvements

The reporting of errors, omissions, and recommendations for improving this publication by the individual user is encouraged. Reports should be submitted on DA Form 2028 (Recommended Changes to Publications and Blank Forms) and forwarded direct to Commander, US Army Electronics Command, ATTN: AMSEL-MA-CW, Fort Monmouth, N.J., 07703.

(Next printed page is 6)

(1) SMR CODE	(2) FEDERAL STOCK NUMBER	(3) DESCRIPTION REFERENCE NUMBER & MFR CODE USABLE ON CODE	(4) UNIT OF MEAS	(5) QTY. INC IN UNIT	(6) 15-DAY ORGANIZATIONAL MAINTENANCE ALW				(7) ILLUSTRATION	
					(a)	(b)	(c)	(d)	(a)	(b)
					1-5	6-20	21-50	51-100	FIGURE NO.	ITEM NO.
XDOZZ		CAP. ELECTRICAL NO-REF-DESIG PLASTIC 0.422 TN LG X 0.690 IN DIA 342004SA2 (75915)	EA	1	*	*	*	*		
PACZZ	5920-504-8634	FUSE, CARTRIDGE 1A1F1 1/4 AMP, 125V 1-1/4 IN. LG X 1/4 IN DIA 313-250 (75915)	EA	1	*	*	*	*	15	
PAQZZ	5355-616-9604	KNOB NO-REF-DESIG SETSCREW TYPE PHENOLIC 1.063 IN LG X 0.721 IN W X 0.621 IN THK 70-4-2G (49956)	EA	1	*	*	*	*	1	
PAQZZ	5355-556-0145	KNOB NO-REF-DESIG SETSCREW TYPE PLASTIC 1 IN LG X 0.703 IN W X 0.790 IN THK MS91528-1KS2B (96906)	EA	4	*	*	*	*	1	
PAQZZ	5355-552-1810	KNOB NO-REF-DESIG PLASTIC 1.058 IN LG X .708 IN W X .805 INH O/A 70-5-1G (49956)	EA	1	*	*	*	*	1	
PACZZ	6240-155-8706	LAMP, INCANDESCENT 1A1DS1 6-8Vm T-3-1/4 CLEAR. BULB 1-1/8 IN LG 47 (24446)	EA	5	*	*	*	*	15	
PACZZ	6240-155-8706	LAMP, INCANDESCENT 1A1DS2 6-8V, T-3-114 CLEAR. BULB 1-1/8 IN LG 47 (24446)	EA	REF	*	*	*	*	15	
PACZZ	6240-155-8706	LAMP, INCANDESCENT 1A1DS4 6-8V, T-3-1/4 CLEAR. BULB 1-1/8 IN LG 47 (24446)	EA	REF	*	*	*	*	15	
PACZZ	6240-155-8706	LAMP, INCANDESCENT 1A1DS5 6-8V, T-3-114 CLEAR. BULB 1-1/8 IN LG 47 (24446)	EA	REF	*	*	*	*	15	
PACZZ	6240-155-8706	LAMP, INCANDESCENT 1A1DS6 6-8V T-3-114 CLEAR. BULB 1-1/8 IN LG 47 (24446)	EA	REF	*	*	*	*	15	
PAQHD	5805-073-3247	TELEPHONE TERMINAL SUBASSEMBLY 1A2A3 4 WR. . . . AMPLIFIER CARD 7-25/32 IN LG X 4-1/2IN W X 5/8 IN THK	EA	1	*	*	*	*	15	
PAQHD	5805-073-5397	053588010-2 (96238) TELEPHONE TERMINAL SUBASSEMBLY 1A2A1 4 WS. . . . AMPLIFIER CARD 7-25/32 IN LG X 4-1/2IN W X 5/8 IN THK	EA	1	*	*	*	*	15	
PAUHU	5805-073-53987	053588510-A (96238) TELEPHONE TERMINAL SUBASSEMBLY 1A2A2 CONTROL. . . . AMPLIFIER CARD 7-25/32 IN LG X 4-1/2 IN W X 5/8 IN THK	EA	1	*	*	*	*	15	
XDOHD		053588070 (96238) TELEPHONE TERMINAL SUBASSEMBLY 1A2A7 NOISE. . . . REDUCING AMPLIFIER CARD 7-25/32 IN LG X 4-1/2 IN W X 5/8 IN THK	EA	1	*	*	*	*	21	
XDOHD		053588030 (96238) TELEPHONE TERMINAL SUBASSEMBLY 1A2A8 RECEIVE. . . . CONTROL DETECTOR CARD 7-25/32 IN LG X 4-1/2 IN W X 5/8 IN THK	EA	1	*	*	*	*	22	
PAQHD	5805-073-0303	053588020 (96238) TELEPHONE TERMINAL SUBASSEMBLY 1A2A5 SIGNALING RECEIVE CARD 7-25/32 IN LG X 4-1/2 IN W X 5/8 IN THK	EA	1	*	*	*	*	19	
PAQHD	5805-205-5588	053588060 (96238) TELEPHONE TERMINAL SUBASSEMBLY 1A2A6. SIGNALING-RECEIVE CONTROL CARD 7-25/32 INX 4-1/2 IN W X 5/8 IN THK	EA	1	*	*	*	*	20	
PAQHD	5805-073-0295	053588080 (96238) TELEPHONE TERMINAL SUBASSEMBLY NO-REF-DESIG. . . . SIGNALING TRANSMIT CARD 7-25/32 IN LG X 4-1/2 IN W X 5/8 IN THK	EA	1	*	*	*	*	18	
PAQHD	5805-073-0302	053588040 (96238) TELEPHONE TERMINAL SUBASSEMBLY 1A2A9 TRANSMIT. . . . CONTROL CARD 7-25/32 IN LG X 4-1/2 IN W X 5/8 IN THK	EA	1	*	*	*	*	23	
PAQHD	5805-073-0305	D53588050 (96238) TELEPHONE TERMINAL SUBASSEMBLY 1A2A10 USED TO. . . . TEST PRINTED CIRCUIT CARDS 8-3/16IN LG X 4-1/2 IN W X 5/8 IN THK	EA	1	*	*	*	*	15	
XDOZZ		PC737-2 (96238) CAP1 ELECTRICAL NO-REF-DESIG	EA	1	*	*	*	*	15	
PAQZZ	5910-226-2930	342004SA2 (75915) CAPACITOR, FIXED, ELECTROLYTIC C5 500 UF 25. . . . VDCW 2.656 IN LG X 1.156 IN DIA 52RTTK500 (74861)	EA	2	*	*	*	*	15	C5
PAQZZ	5910-226-2930	CAPACITOR, FIXED, ELECTROLYTIC C6 500 UF VDCW 2.656 IN LG X 1.156 IN DIA 52RTTK500 (74861)	EA	REF	*	*	*	*	15	C6
PAQZZ	5910-989-4710	CAPACITOR, FIXED, ELECTROLYTIC C1 500 UF 50. . . .	EA	2	*	*	*	*	15	C1

ORGANIZATIONAL REPAIR PARTS/TOOLS LIST

(1) SMR CODE	(2) FEDERAL STOCK NUMBER	(3) DESCRIPTION REFERENCE NUMBER & MFR CODE USABLE ON CODE		(4) UNIT OF MEAS	(5) QTY. INC IN UNIT	(6) 15-DAY ORGANIZATIONAL MAINTENANCE ALW				(7) ILLUSTRATION	
						(a)	(b)	(c)	(d)	(a)	(b)
						1-5	6-20	21-50	51-100	FIGURE NO.	ITEM NO.
		CONTINUED									
PAOZZ	5910-989-4710		VDCW 2.156 IN LG X 1.531 IN DIA 05RTTK500 (74861) CAPACITOR, FIXED, ELECTROLYTIC C2 500 UF 50... VDCW 2.156 IN LG X 1.531 IN DIA 05RTTK500 (74861)	EA	REF	*	*	*	*	15	C2
XDCZZ			FUSE, CARTRIDGE F1 0.125 AMP 250..... F02G8125A (81349)	EA	1	*	*	*	*	15	F1
XDOZZ			RELAY ARMATURE K2 DPDT 120V AC, 0.5 AMP, 28 VDC, 0.5 AMP POLARIZED 2.218 IN LG X 1 IN W X 1 IN D 22KNCC2500GGSP (78277)	EA	2	*	*	*	*	15	K2
XDOZZ			DELAY, ARMATURE K4 DPDT 120 V AC, 0.5 AMP, 28 VDC, 0.5 AMP POLARIZED 2.218 IN LG X 1 IN W X 1 IN D 22KNCC2500GGSP (78277)	EA	REF	*	*	*	*	15	K4
PAOZZ	5945-914-4413		RELAY, ARMATURE K1 SPDT 120V AC, 0.5 AMP, 28. VDC 0.5 AMP POLARIZED 3.156 IN LG X 1.312 IN DIA 2404Z160TGS1L (78277)	EA	1	*	*	*	*	15	K1
PAOZZ	5945-226-4206		RELAY, ARMATURE K11 115V AC, 1 AMP, 29V, 1.... AMP 1.406 IN LG X 0.734 IN W X 0.734 IN H TL154-2C48VDC (02268)	EA	2	*	*	*	*	15	K11
PAOZZ	5945-226-4206		RELAY, ARMATURE K12 115V AC, 1 AMP, 29V1 1.... AMP 1.406 IN LG X 0.734 IN W X 0.734 IN H TL154-2C48VDC (02288)	EA	REF	*	*	*	*	15	K12
PAOZZ	5945-813-9113		RELAY, ARMATURE K3 115V AC, 1 AMP, 29 VDC, 1.. WP 1.406 IN LGX 0.734 IN U X 1.172 IN H TL154-4C24VDC (02288)	EA	3	*	*	*	*	15	K3
PAOZZ	5945-813-9113		RELAY, ARMATURE K6 115V AC, 1 AMP, 29 VDC, 1.. AMP 1.406 IN LGX 0.734 IN W X 1.172 IN H TL154-4C24VDC (02288)	EA	REF	*	*	*	*	15	K6
PAOZZ	5945-813-9113		RELAY, ARMATURE K8 115V AC, 1 AMP, 29 VDC, 1.. AMP 1.406 IN LGX 0.734 IN 1 X 1.172 IN H TL154-4C24VDC (02288)	EA	REF	*	*	*	*	15	K8
PAOZZ	5945-823-3026		RELAY, ARMATURE K7 115V AC, 2 AMP, 29 VDC, 2.. AMP POLARIZED 1.402 IN LG X 1.171 IN W X 0.734 IN D TL154-2C24VDC (02288)	EA	2	*	*	*	*	15	K7
P _Z	5945-823-3026		RELAY, ARMATURE K10 115V AC, 2 AMP, 29 VDC, 2.. AMP POLARIZED 1.402 IN LG X 1.171 IN W X 0.734 IN D TL154-2C24VDC (02288)	EA	REF	*	*	*	*	15	K10
PAOZZ	5945-823-3025		RELAY, ARMATURE K9 115V AC, 2 AMPS, 29 VDC, 2.. AMPS POLARIZED 1.402 IN LG X 1.171 IN W X 0.734 IN D TL154-4C48VDC (02288)	EA	1	*	*	*	*	15	K9
PAOZZ	5945-2264205		RELAY, ARMATURE K5 120V AC, 1 AMP 1.313 IN LG X 1.313 IN W X 2.000 IN H 41R02500FK8SL (78277)	EA	1	*	*	*	*	15	K5

SECTION V

(1) SMR CODE	(2) FEDERAL STOCK NUMBER	(3) DESCRIPTION REFERENCE NUMBER & MFR CODE USABLE ON CODE	(4) INIT OF IEAS	(5) QTY INC IN UNIT	(6) 30-DAY DS MAINT ALLOWANCE			(7) 30-DAY GS MAINT ALLOWANCE			(8) 1-YR ALW PER 100 EQUIP CNTGCT	(9) DEPOT MAINT ALW PER 100 EQUIP	(10) ILLUSTRATION	
					(a)	(b)	(c)	(a)	(b)	(c)			(a)	(b)
					1-20	21-50	51-100	1-20	21-50	51-100			FIGURE NO.	ITEM NO.
XDOZZ		CAP, ELECTRICAL NO-REF-DESIG PLASTIC ... 0.422 IN LG X 0.690 IN DIA 342004SAZ (75915)	EA	1	*	*	*	*	*	*				
XDFZZ		CONNECTOR, RECEPTACLE, ELECTRICAL 1A2J1... 22 CONT STRAIGHT SHAPE 4-9/32 IN LG X 7/16 IN W X 21/64 IN H EXCL TERM 2VH221A83 (05574)	EA	10	*	*	*	*	*	*			15	J1
XDFZZ		CONNECTOR, RECEPTACLE, ELECTRICAL 1A2J2... 22 CONT STRAIGHT SHAPE 4-9/32 IN LG X 7/16 IN W X 21/64 IN H EXCL TERM 2VH221AB3 (05574)	EA	REF	*	*	*	*	*	*			15	J2
XDFZZ		CONNECTOR, RECEPTACLE, ELECTRICAL 1A2J3... 22 CONT STRAIGHT SHAPE 4-9/32 IN LG X 7/16 IN W X 21/64 IN H EXCL TERM 2VH221AB3 (05574)	EA	REF	*	*	*	*	*	*			15	J3
XDFZZ		CONNECTOR, RECEPTACLE, ELECTRICAL 1A2J4... 22 CONT STRAIGHT SHAPE 4-9/32 IN LG X 7/16 IN W X 21/64 IN H EXCL TERM 2VH221AB3 (05574)	EA	REF	*	*	*	*	*	*			15	J4
XDFZZ		CONNECTOR RECEPTACLE, ELECTRICAL 1A2J5... 22 CONT STRAIGHT SHAPE 4-9/32 IN LG X 7/16 IN W X 21/64 IN H EXCL TERM 2VH221AB3 (05574)	EA	REF	*	*	*	*	*	*			15	J5
XDFZZ		CONNECTOR, RECEPTACLE, ELECTRICAL 1A2J6... 22 CONT STRAIGHT SHAPE 4-9/32 IN LG X 7/16 IN W X 21/64 IN H EXCL TERM 2VH221AB3 (05574)	EA	REF	*	*	*	*	*	*			15	J6
XDFZZ		CONNECTOR, RECEPTACLE, ELECTRICAL 1A2J7... 22 CONT STRAIGHT SHAPE 4-9/32 IN LG X 7/16 IN W X 21/64 IN H EXCL TERM 2VH221AB3 (05574)	EA	REF	*	*	*	*	*	*			15	J7
XDFZZ		CONNECTOR, RECEPTACLE, ELECTRICAL 1A2J8... 22 CONT STRAIGHT SHAPE 4-9/32 IN LG X 7/16 IN W X 21/64 IN H EXCL TERM 2VH221AB3 (05574)	EA	REF	*	*	*	*	*	*			15	J8
XDFZZ		CONNECTOR, RECEPTACLE, ELECTRICAL 1A2J9... 22 CONT STRAIGHT SHAPE 4-9/32 IN LG X 7/16 IN W X 21/64 IN H EXCL TERM 2VH221AB3 (05574)	EA	REF	*	*	*	*	*	*			15	J9
XDFZZ		CONNECTOR, RECEPTACLE, ELECTRICAL 1A2J10... 22 CONT STRAIGHT SHAPE 4-9/32 IN LG X 7/16 IN W X 21/64 IN H EXCL TERM 2VH221AB3 (05574)	EA	REF	*	*	*	*	*	*			15	J10
PAFZZ	5915-073-0310	FILTER, BAND PASS-BAND SUPPRESSION 1A2Z1... 1275 CPS OPER FREQ 1-1/2 IN X 6 IN X 6- 15/16 IN D53832000 (96238)	EA	2	*	*	*	*	*	*		3		21
PAFZZ	5915-073-0310	FILTER, BAND PASS-BAND SUPPRESSION 1A2Z2... 1275 CPS OPER FREQ 1-1/2 IN X 6 IN X 6- 15/16 IN D53832000 (96238)	EA	REF	*	*	*	*	*	*		3	15	22
PACZZ	5920-504-8634	FUSE, CARTRIDGE 1A1F1 1/4 AMP, 125v 1- CONTINUED	EA	1	*	*	*	*	*	*		50	15	

SECTION V

(1) SMR CODE	(2) F E D E R A L STOCK NUMBER	(3) DESCRIPTION REFERENCE NUMBER & MFR. CODE USABLE ON CODE	(4) UNIT OF MEAS	(5) QTY INC IN UNIT	(6) 30-DAY DS MAINT ALLOWANCE			(7) 30-DAY GS MAINT ALLOWANCE			(8) 1-YR ALW PER 100 EQUIP CNIGCY	(9) DEPOT ALW PER 100 EQUIP	(10) ILLUSTRATION	
					(a)	(b)	(c)	(a)	(b)	(c)			(a)	(b)
					1-20	21-50	51-100	1-20	21-50	51-100			FIGURE NO.	ITEM NO.
		CONTINUED												
XDFZZ		1/4 IN LG X 1/4 IN DIA 313-250 (75915) FUSE HOLDER 1A1FX1 EXTRACTOR POST TYPE .. PLASTIC 1.703 IN LG X 1 IN W X 0.690 IN H 042004 (75915)	EA	1	*	*	*	*	*	*				
PAFZZ	5935-608-0518	JACK, TELEPHONE 1A1J1 SPRING LEAF CONT. BUSHING MTD 1.281 IN LGX 0.750 IN DIA L12A (82389)	EA	4	*	*	*	*	*	*	2	15	J1	
PAFZZ	5935-608-0518	JACK, TELEPHONE 1A1J2 SPRING LEAF CONT. BUSHING MTD 1.281 IN LGX 0.750 IN DIA L12A (82389)	EA	REF	*	*	*	*	*	*	2	15	J2	
PAFZZ	5935-608-0518	JACK, TELEPHONE 1A1J3 SPRING LEAF CONT. BUSHING MTD 1.281 IN LGX 0.750 IN DIA L12A (82389)	EA	REF	*	*	*	*	*	*	2	15	J3	
PAFZZ	5935-608-0518	JACK, TELEPHONE 1A1J4 SPRING LEAF CONT. BUSHING MTD 1.281 IN LGX 0.750 IN DIA L12A (82389)	EA	REF	*	*	*	*	*	*	2	15	J4	
XDFZZ		JACK, TELEPHONE 1A1J5 SPRING LEAF TYPE .. 1.219 IN LG X 0.250 IN DIA MT333 (82389)	EA	2	*	*	*	*	*	*		15	J5	
XDFZZ		JACK, TELEPHONE 1A1J6 SPRING LEAF TYPE .. 1.219 IN LG X 0.250 IN DIA MT333 (82389)	EA	REF	*	*	*	*	*	*		15	J6	
PAOZZ	5355-616-9604	KNOB NO-REF-DESIG SETSCREW TYPE	EA	1	*	*	*	*	*	*	3	1		
		PHENOLIC 1.063 IN LG X 0.721 IN W X 0.621 IN THK 70-4-2G (49956)												
PAOZZ	5355-556-0145	KNOB NO-REF-DESIG SETSCREW TYPE	EA	4	*	*	*	*	*	*	3	1		
		PLASTIC 1 IN LG X 0.703 IN W X 0.790 IN THK MS91528-1K28 (96906)												
PAOZZ	5355-552-1810	KNOB NO-REF-DESIG PLASTIC 1.058 IN LG X .708 IN W X .805 IN H O/A 70-5-1G (49956)	EA	1	*	*	*	*	*	*	3	1		
PACZZ	6240-155-8706	LAMP, INCANDESCENT 1AIDS1 6-8V. T-3-1/4. CLEAR BULB 1-1/8 IN LG 47 (24446)	EA	5	*	*	*	*	*	*	20	15		
PACZZ	6240-155-8706	LAMP, INCANDESCENT 1AIDS2 6-8V. T-3-1/4 CLEAR BULB 1-1/8 IN LG 47 (24446)	EA	REF	*	*	*	*	*	*	20	15		
PACZZ	6240-155-8706	LAMP, INCANDESCENT 1AIDS4 6-8V. T-3-1/4. CLEAR BULB 1-118 IN LG 47 (24446)	EA	REF	*	*	*	*	*	*	20	15		
PACZZ	6240-155-8706	LAMP, INCANDESCENT 1AIDS5 6-8V. T-3-1/4. CLEAR BULB 1-1/8 IN LG 47 (24446)	EA	REF	*	*	*	*	*	*	20	15		
PACZZ	6240-155-8706	LAMP, INCANDESCENT 1AIDS6 6-8V. T-3-1/4. CLEAR BULB 1-1/8 IN LG 47 (24446)	EA	REF	*	*	*	*	*	*	20	15		
PAFZZ	6210-299-5307	LIGHT, INDICATOR 1A1XDS4 W/BLEND LENS ... ACCOM T-3-1/4 BULB 2.265 IN LG X 0.812 IN CONTINUED	EA	1	*	*	*	*	*	*	5	15	DS4	

SECTION V

T M 11-5805-247-24 P

(1) SMR CODE	(2) FEDERAL STOCK NUMBER	(3) DESCRIPTION REFERENCE NUMBER & MFR. CODE USABLE ON CODE	(4) UNIT OF MEAS	(5) QTY INC IN UNIT	(6) 30-DAY DS MAINT ALLOWANCE			(7) 30-DAY GS MAINT ALLOWANCE			(8) 1-YR ALW PER 100 EQUIP CNTGCT	(9) DEPOT MAINT ALW PER 100 EQUIP	(10) ILLUSTRATION	
					(a)	(b)	(c)	(a)	(b)	(c)			(a)	(b)
					1-20	21-50	51-100	1-20	21-50	51-100			FIGURE NO.	ITEM NO.
		CONTINUED												
PAFZZ	6210-232-8166	DIA LH62BB2 (81349) LIGHT, INDICATOR 1A1XDS1.....	EA	1	*	*	*	*	*	*	5		DS1	
PAFZZ	6210-500-3618	81410-112 (72619) LIGHT, INDICATOR 1A1XDS2 W/RED LENS	EA	1	*	*	*	*	*	*	5		DS2	
PAFZZ	6210-260-7645	ACC0M T-3-1/4 BULB 2.265 IN LG X 0.812 IN DIA LH62BR2 (81349) LIGHT, INDICATOR 1A1XDS5 W/WHITE LENS . .	EA	1	*	*	*	*	*	*	5		DS5	
PAFZZ	62X-636-2564	ACC0M T-34 BULB 2-1/4 IN LGX 13/16 IN DIA 81410-115 (06987) LIGHT, INDICATOR 1A1XDS6 W/YELLOW LENS .	EA	1	*	*	*	*	*	*	5		DS6	
XDFZZ		ACC0M T-34 BULB 2-1/4 IN LG X 13/16 IN DIA 81410-116 (06987) REACTOR 1A2L1 20 HY INDUCTANCE 1.000...	EA	1	*	*	*	*	*	*			23	L1
PAFZZ	5905-106-1274	OHM DC RES 1 IN LG X 2 IN DIA P54-27T (07388) RESISTOR, FIXED, COMPOSITION 1A1B2 910..	EA	1	*	*	*	*	*	*	3	24	R2	
PAFZZ	5905-249-4200	OHM PORMPCT 1/2W RC20GF911J (81349) RESISTOR, FIXED, COMPOSITION 1A1R4 9100..	EA	1	*	*	*	*	*	*	3	24	R4	
PAFZZ	5905-192-0649	OHM PORM5PCT 1/2W RC20GF912J (81349) RESISTOR, FIXED, COMPOSITION 1A1R3 20,....	EA	1	*	*	*	*	*	*	3	24	R3	
PAFZZ	5905-643-5626	000 OHM PORM5PCT 1/2W RC20GF203J (81349) RESISTOR, VARIABLE 1A1R1 5000 OHMS....	EA	1	*	*	*	*	*	*	3	18	R1	
PAFZZ	5930-578-2353	PORM10PCT RV4NAYS502A (81349) SWITCH, PUSH 1A1S4 SPST 1 PLUNGER TYPE.	EA	1	*	*	*	*	*	*	5			
PAFZZ	5930-724-2735	ACTUATOR 0.904 IN LGX 0.875 IN DIA MS25089-4CR (96906) SWITCH, PUSH 1A1S3 DPST 1 BUTTON TYPE..	EA	1	*	*	*	*	*	*	5			
PAFZZ	5930-073-8773	ACTUATOR 0.904 IN LG X 0.875 IN DIA 138865A3LE (78947) SWITCH, ROTARY 1A1S1 3 SWITCHING.....	EA	1	*	*	*	*	*	*	5			
PAFZZ	5930-073-8775	POSITIONS NONPILE-UP TYPE 1-9/16 IN W X 1-1/2 IN H PA024-4273 (71590) SWITCH, ROTARY 1A1S6 3 SWITCHING.....	EA	1	*	*	*	*	*	*	5			
PAFZZ	5930-073-8774	POSITIONS NONPILE-UP TYPE 15/16 IN LG X 1-5/16 IN W X 1-1/2 IN H PA024-5488 (71590) SWITCH, ROTARY 1A1S7 3 SWITCHING	EA	2	*	*	*	*	*	*	5			
PAFZZ	5930-073-8774	POSITIONS NONPILE-UP TYPE 15/16 IN LG X 1-5/16 IN W X 1-1/2 IN H PA024-4271 (71590) SWITCH, ROTARY 1A1S9 3 SWITCHING.....	EA	REF	*	*	*	*	*	*	5			
		POSITIONS NONPILE-UP TYPE 15/16 IN LG X 1-5/16 IN W X 1-1/2 IN H PA024-4271 (Y1590)												

(1) FWR CODE	(2) FEDERAL STOCK NUMBER	(3) DESCRIPTION REFERENCE NUMBER & MFR. CODE USABLE ON CODE		(4) UNIT OF MEAS	(5) QTY INC IN UNIT	(6) 30-DAY DS MAINT ALLOWANCE			(7) 30-DAY GS MAINT ALLOWANCE			(8) 1-YR ALW PER 100 EQUIP CNTG	(9) DEPOT MAINT ALW PER 100 EQUIP	(10) ILLUSTRATION	
						(a)	(b)	(c)	(a)	(b)	(c)			(a)	(b)
						1-20	21-50	51-100	1-20	21-50	51-100			FIGURE NO	ITEM NO
PAFZZ	5930-072-9488	SWITCH, ROTARY 1A1S2 2 SWITCHING POSITIONS NONPILE-UP TYPE 11/16 IN LG X 15/16 IN W X 1-1/32 IN H 1/32 IN H PA110-1074 (71590)		EA	1	*	*	*	*	*	*			5	
PAFZZ	4930-655-1507	SWITCH TOGGLE 1A1S5 DPST BAT TYPE..... ACTUATOR 1.281 IN LG X 0.718 IN W X 0.968 IN H MS25100-22 (96906)		EA	1	*	*	*	*	*	*			5	
PAFZZ	5930-892-9438	SWITCH, LEVER 1A1S8 2 LEVER POSITIONS 3 AMPS 120V 2.625 IN LG X 0.625 IN W X 0.844 IN H 13004 (82389)		EA	1	*	*	*	*	*	*			5	
PAQHD	5805-073-3247	TELEPHONE TERMINAL SUBASSEMBLY 1A2A3 4.. WR AMPLIFIER CARD 7-25/32 IN LG X 4-1/2 IN W X 5/8 IN THK D53588010-2 (96238)		EA	1	*	*	*	*	*	*			5	15
PAQHD	5805-073-5397	TELEPHONE TERMINAL SUBASSEMBLY 1A2A1 4.. WS AMPLIFIER CARD 7-25/32 IN LG X 4-1/2 IN W X 5/8 IN THK D53588010-1 (96238)		EA	1	*	*	*	*	*	*			5	15
PAQHD	5805-073-5398	TELEPHONE TERMINAL SUBASSEMBLY 1A2A2..... CONTROL AMPLIFIER CARD 7-25/32 IN LG X 4- 1/2 IN W X 5/8 IN THK D53588070 (96238)		EA	1	*	*	*	*	*	*			5	15
XDCED		TELEPHONE TERMINAL SUBASSEMBLY 1A2A7..... NOISE-REDUCING AMPLIFIER CARD 7-25/32 IN LG X 4-1/2 IN W X 5/8 IN THK D53588030 (96238)		EA	1	*	*	*	*	*	*				21
XDOHD		TELEPHONE TERMINAL SUBASSEMBLY 1A2A8..... RECEIVE-CONTROL DETECTOR CARD 7-25/32 IN LG X 4-1/2 IN W X 5/8 IN THK D53588020 (96238)		EA	1	*	*	*	*	*	*				22
PAQHD	5805-073-0303	TELEPHONE TERMINAL SUBASSEMBLY 1A2A5..... SIGNALING RECEIVE CARD 7-25/32 IN LG X 4- 1/2 IN W X 5/8 IN THK D53588060 (96238)		EA	1	*	*	*	*	*	*			5	19
PAQHD	5805-205-5588	TELEPHONE TERMINAL SUBASSEMBLY 1A2A6..... SIGNALING-RECEIVE CONTROL CARD 7-25/32 IN X 4-1/2 IN W X 5/8 IN THK D53588080 (96238)		EA	1	*	*	*	*	*	*			5	20
PAQHD	5805-073-0295	TELEPHONE TERMINAL SUBASSEMBLY NO-REF- DESIG SIGNALING TRANSMIT CARD 7-25/32 IN LG X 4-1/2 IN W X 5/8 IN THK D53588040 (96238)		EA	1	*	*	*	*	*	*			5	18
PAQHD	5805-073-0302	TELEPHONE TERMINAL SUBASSEMBLY 1A2A9..... TRANSMIT CONTROL CARD 1-25/32 IN LG X 4- 1/2 IN W X 5/8 IN THK D53588050 (96238)		EA	1	*	*	*	*	*	*			5	23
PAQHD	5805-073-0305	TELEPHONE TERMINAL SUBASSEMBLY 1A2A10.... USED TO TEST PRINTED CIRCUIT CARDS 8- 3/16 IN LG X 4-1/2 IN W X 5/8 IN THK PC737-2 (96238)		EA	1	*	*	*	*	*	*			5	15

SECTION V

TM 11-5805-347-24P

(1) SMR CODE	(2) FEDERAL STOCK NUMBER	(3) DESCRIPTION REFERENCE NUMBER & MFR. CODE USABLE ON CODE	(4) UNIT OF MEAS	(5) QTY INC IN UNIT	(6) 30-DAY DS MAINT ALLOWANCE			(7) 30-DAY GS MAINT ALLOWANCE			(8) 1-YR ALW PER 100 EQUIP CNTGCV	(9) DEPOT MAINT ALW PER 100 EQUIP	(10) ILLUSTRATION	
					(a)	(b)	(c)	(a)	(b)	(c)			(a)	(b)
					1-20	21-50	51-100	1-20	21-50	51-100			FIGURE NO.	ITEM NO.
PAHZZ	5910-834-9721	CAPACITOR, FIXED, PLASTIC DIELECTRIC C4.. 220,000 UUF PORM20PCT 100 VDCW 1 IN LG X 0.328 IN DIA UHF1P22E (14655)	EA	2				*	*	*		3	15	C4
PAHZZ	5910-834-9121	CAPACITOR, FIXED, PLASTIC DIELECTRIC C6.. 220,000 UUF PORM20PCT 100 VDCW 1 IN LG X 0.328 IN DIA UHF1922E (14655)	EA	REF				*	*	*		3	15	C6
PAHZZ	5910-834-4900	CAPACITOR, FIXED, ELECTROLYTIC C1 10 UF. 15 VDCW 11/16 IN LG X 1/4 IN DIA TE1155 (56289)	EA	11				*	*	*		3	15	C1
PAHZZ	5910-834-4900	CAPACITOR, FIXED, ELECTROLYTIC C2 10 UF. 15 VDCW 11/16 IN LG X 1/4 IN DIA TE1155 (56289)	EA	REF				*	*	*		3	15	C2
PAHZZ	5910-834-4900	CAPACITOR, FIXED, ELECTROLYTIC C3 10 UF. 15 VDCW 11/16 IN LG X 1/4 IN DIA TE1155 (56289)	EA	REF				*	*	*		3	15	C3
PAHZZ	5910-834-4900	CAPACITOR, FIXED, ELECTROLYTIC C5 10 UF. 15 VDCW 11/16 IN LG X 1/4 IN DIA TE1155 (56289)	EA	REF				*	*	*		3	15	C5
PAHZZ	5910-834-4900	CAPACITOR, FIXED, ELECTROLYTIC C7 10 UF. 15 VDCW 11/16 IN LG X 1/4 IN DIA TE1155 (56289)	EA	REF				*	*	*		3	15	C7
PAHZZ	5910-834-4900	CAPACITOR, FIXED, ELECTROLYTIC C9 10 UF. 15 VDCW 11/16 IN LG X 1/4 IN DIA TE1155 (56289)	EA	REF				*	*	*		3	15	C9
PAHZZ	5910-834-4900	CAPACITOR, FIXED, ELECTROLYTIC C11 10 UF. 15 VDCW 11/16 IN LG X 1/4 IN DIA TE1155 (56289)	EA	REF				*	*	*		3	15	C11
PAHZZ	5910-834-4900	CAPACITOR, FIXED, ELECTROLYTIC C12 10 UF. 15 VDCW 11/16 IN LG X 1/4 IN DIA TE1155 (56289)	EA	REF				*	*	*		3	15	C12
PAHZZ	5910-834-4900	CAPACITOR, FIXED, ELECTROLYTIC C14 10 UF. 15 VDCW 11/16 IN LG X 1/4 IN DIA TE1155 (56289)	EA	REF				*	*	*		3	15	C14
PAHZZ	5910-834-4900	CAPACITOR, FIXED, ELECTROLYTIC C15 10 UF. 15 VDCW 11/16 IN LG X 1/4 IN DIA TE1155 (56289)	EA	REF				*	*	*		3	15	C15
PAHZZ	5910-834-4900	CAPACITOR, FIXED, ELECTROLYTIC C16 10 UF. 15 VDCW 11/16 IN LG X 1/4 IN DIA TE1155 (56289)	EA	REF				*	*	*		3	15	C16
PAHZZ	5910-837-4582	CAPACITOR, FIXED, ELECTROLYTIC C10 20 UF. 25 VDCW 0.688 IN LG X 0.313 IN DIA TE1206 (56289)	EA	1				*	*	*		3	15	C10
PAHZZ	5910-691-1249	CAPACITOR, FIXED, ELECTROLYTIC C8 100. UF 12 VDCW 0.812 IN LG X 0.375 IN DIA TE1135 (56289)	EA	2				*	*	*		3	15	C8
PAHZZ	5910-691-1249	CAPACITOR, FIXED, ELECTROLYTIC C13 100.. UF 12 VDCW 0.812 IN LG X 0.375 IN DIA TE1135 (56289)	EA	REF				*	*	*		3	15	C13
PAHZZ	5905-111-4734	RESISTOR, FIXED, COMPOSITION R24 47 OHM. PORM5PCT 1/2W RC20GF470J (81349)	EA	1				*	*	*		3	15	R24

SECTION V		(3)		(4)	(5)	(6)			(7)			(8)	(9)	(10)		
SMR CODE	FEDERAL STOCK NUMBER	DESCRIPTION		UNIT OF MEAS	QTY IN UNIT	30-DAY DS MAINT ALLOWANCE			30-DAY GS MAINT ALLOWANCE			1-YR ALW PER EQUIP CNTGCT	DEPOT MAINT ALW PER EQUIP	ILLUSTRATION		
		REFERENCE NUMBER & MFR. CODE	USABLE ON CODE			(a)	(b)	(c)	(a)	(b)	(c)			(a)	(b)	
						1-20	21-50	51-100	1-20	21-50	51-100			FIGUR NO	ITEM NO	
PAHZZ	5905-192-3971	RESISTOR, FIXED, COMPOSITION R18	330 OHM	EA	1				*	*	*			3	15	R18
		PORM5PCT 1/2W RC20GF331J (81349)														
PAHZZ	5905-279-3511	RESISTOR, FIXED, COMPOSITION R30	510 OHM	EA	1				*	*	*			3	15	R30
		PORM5PCT 1/2W RC20GF511J (81349)														
PAHZZ	5905-141-0723	RESISTOR, FIXED, COMPOSITION R39	620 OHM	EA	1				*	*	*			3	15	R39
		PORM5PCT 1/2W RC20GF621J (81349)														
PAHZZ	5905-195-6791	RESISTOR, FIXED, COMPOSITION R25	680 OHM	EA	2				*	*	*			3	15	R25
		PORM5PCT 1/2W RC20GF681J (81349)														
PAHZZ	5905-195-6791	RESISTOR, FIXED, COMPOSITION R35	680 OHM	EA	REF				*	*	*			2	15	R35
		PORM5PCT 1/2W RC20GF681J (81349)														
PAHZZ	5905-195-6806	RESISTOR, FIXED, COMPOSITION R31	1000...	EA	1				*	*	*			3	15	R31
		OHM PORM5PCT 1/2W RC20GF102J (81349)														
PAHZZ	5905-190-8880	RESISTOR, FIXED, COMPOSITION R2	1200 OHM	EA	9				*	*	*			3	15	R2
		PORM5PCT 1/2W RC20GF122J (81349)														
PAHZZ	5905-190-8880	RESISTOR, FIXED, COMPOSITION R9	1200 OHM	EA	REF				*	*	*			3	15	R9
		PORM5PCT 1/2W RC20GF122J (81349)														
PAHZZ	5905-190-8880	RESISTOR, FIXED, COMPOSITION R10	1200...	EA	REF				*	*	*			3	15	R10
		OHM PORM5PCT 1/2W RC20GF122J (81349)														
PAHZZ	5905-190-8880	RESISTOR, FIXED, COMPOSITION R11	1200...	EA	REF				*	*	*			3	15	R11
		OHM PORM5PCT 1/2W RC20GF122J (81349)														
PAHZZ	5905-190-3880	RESISTOR, FIXED, COMPOSITION R12	1200...	EA	REF				*	*	*			3	15	R12
		OHM PORM5PCT 1/2W RC20GF122J (81349)														
PAHZZ	5905-190-8880	RESISTOR, FIXED, COMPOSITION R16	1200...	EA	REF				*	*	*			3	15	R16
		OHM PORM5PCT 1/2W RC20GF122J (81349)														
PAHZZ	5905-190-8880	RESISTOR, FIXED, COMPOSITION R17	1200...	EA	REF				*	*	*			3	15	R17
		OHM PORM5PCT 1/2W RC20GF122J (81349)														
PAHZZ	5905-190-8880	RESISTOR, FIXED, COMPOSITION R19	1200...	EA	REF				*	*	*			3	15	R19
		OHM PORM5PCT 1/2W RC20GF122J (81349)														
PAHZZ	5905-190-8880	RESISTOR, FIXED, COMPOSITION R20	1200...	EA	REF				*	*	*			3	15	R20
		OHM PORM5PCT 1/2W RC20GF122J (81349)														
PAHZZ	5905-279-1877	RESISTOR, FIXED, COMPOSITION R23	2400...	EA	2				*	*	*			3	15	R23
		OHM PORM5PCT 1/2W RC20GF242J (81349)														
PAHZZ	5905-279-1877	RESISTOR, FIXED, COMPOSITION R34	2400...	EA	REF				*	*	*			3	15	R34
		OHM PORM5PCT 1/2W RC20GF242J (81349)														
PAHZZ	5905-141-1130	RESISTOR, FIXED, COMPOSITION R6	2700 OHM	EA	5				*	*	*			3	15	R6

(1) SMR CODE	(2) FEDERAL STOCK NUMBER	(3) DESCRIPTION REFERENCE NUMBER & MFR. CODE USABLE ON CODE		(4) UNIT OF MEAS	(5) QTY INC IN UNIT	(6) 30-DAY DS MAINT ALLOWANCE			(7) 30-DAY GS MAINT ALLOWANCE			(8) 1-YR ALW PER 100 EQUIP CNTGCT	(9) DEPOT MAINT ALW PER 100 EQUIP	(10) ILLUSTRATION			
						(a)	(b)	(c)	(a)	(b)	(c)			(a)	(b)		
						1-20	21-50	51-100	1-20	21-50	51-100			FIGURE NO.	ITEM NO.		
			CONTINUED														
PAHZZ	5905-141-1130	PORM5PCT 1/2W RC20GF272J (81349)	R14 2700...	EA	REF				*	*	*		3	15	R14		
PAHZZ	5905-141-1130	RESISTOR, FIXED, COMPOSITION OHM PORM5PCT 1/2W RC20GF272J (81349)	R22 2700...	EA	REF				*	*	*		3	15	R22		
PAHZZ	5905-141-1130	RESISTOR, FIXED, COMPOSITION OHM PORM5PCT 1/2W RC20GF272J (81349)	R28 2700...	EA	REF				*	*	*		3	15	R28		
PAHZZ	5905-141-1130	RESISTOR, FIXED, COMPOSITION OHM PORM5PCT 1/2W RC20GF272J (81349)	R33 2700...	EA	REF				*	*	*		3	15	R33		
PAHZZ	5905-279-3504	RESISTOR, FIXED, COMPOSITION PORM5PCT 1/2W RC20GF472J (81349)	R5 4700 OHM	EA	1				*	*	*		3	15	R5		
PAHZZ	5905-111-4744	RESISTOR, FIXED, COMPOSITION OHM PORM5PCT 1/2W RC20GF512J (81349)	R40 5100...	EA	1				*	*	*		3		R40		
PAHZZ	5905-195-6453	RESISTOR, FIXED, COMPOSITION OHM PORM5PCT 1/2W RC20GF562J (81349)	R38 5600...	EA	1				*	*	*		3		R38		
PAHZZ	5905-279-3499	RESISTOR, FIXED, COMPOSITION OHM PORM5PCT 1/2W RC20GF273J (81349)	R3 27,000..	EA	5				*	*	*		3	15	R3		
PAHZZ	5905-279-3499	RESISTOR, FIXED, COMPOSITION OHM PORM5PCT 1/2W RC20GF273J (81349)	R8 27,000..	EA	REF				*	*	*		3	15	R8		
PAHZZ	5905-279-3499	RESISTOR, FIXED, COMPOSITION OHM PORW5PCT 1/2W RC20GF273J (81349)	R15 27,000..	EA	REF				*	*	*		3	15	R15		
PAHZZ	5905-279-3499	RESISTOR, FIXED, COMPOSITION OHM PORM5PCT 1/2W RC20GF273J (81349)	R27 27,000..	EA	REF				*	*	*		3	15	R27		
PAHZZ	5905-279-3499	RESISTOR, FIXED, COMPOSITION OHM PORM5PCT 1/2W RC20GF273J (81349)	R37 27,000..	EA	REF				*	*	*		3	15	R37		
PAHZZ	5905-114-5489	RESISTOR, FIXED, COMPOSITION OHM PORM5PCT 1/2W RC20GF823J (81349)	R1 82,000..	EA	5				*	*	*		3	15	R1		
PAHZZ	5905-114-5489	RESISTOR, FIXED, COMPOSITION OHM PORM5PCT 1/2W RC20GF823J (81349)	R7 82,000..	EA	REF				*	*	*		3	15	R7		
PAHZZ	5905-114-5489	RESISTOR, FIXED, COMPOSITION OHM PORM5PCT 1/2W RC20GF823J (81349)	R13 82,000..	EA	REF				*	*	*		3	15	R13		
PAHZZ	5905-114-5489	RESISTOR, FIXED, COMPOSITION OHM PORM5PCT 1/2W RC20GF823J (81349)	R26 82,000..	EA	REF				*	*	*		3	15	R26		
PAHZZ	5905-114-5489	RESISTOR, FIXED, COMPOSITION OHM PORM5PCT 1/2W RC20GF823J (81349)	R36 82,000..	EA	REF				*	*	*		3	15	R36		
			CONTINUED														

SECTION V

T.M. 1-5805-347-34P

(1) SMR CODE	(2) FEDERAL STOCK NUMBER	(3) DESCRIPTION REFERENCE NUMBER & MFR. CODE USABLE ON CODE		(4) UNIT OF MEAS	(5) QTY INC IN UNIT	(6) 30-DAY DS MAINT ALLOWANCE			(7) 30-DAY GS MAINT ALLOWANCE			(8) 1-YR ALW PER 100 EQUIP CNTG	(9) DEPOT MAINT ALW PER 100 EQUIP	(10) ILLUSTRATION			
						(a)	(b)	(c)	(a)	(b)	(c)			(a)	(b)		
						1-20	21-50	51-100	1-20	21-50	51-100			FIGURE NO.	ITEM NO.		
			CONTINUED														
PAHZZ	5905-192-0390		OHM PORM5PCT 1/2W RC20GF823J (81349) RESISTOR, FIXED, COMPOSITION R32 1 MEG..	EA	1				*	*	*		3	15	R32		
			OHM PORM5PCT 1/2W RC20GF102J (81349)	EA	1				*	*	*			15	R21		
PAHZZ	5905-883-6313		OHM PORM5PCT 1/2W RC20GF305J (81349) RESISTOR, VARIABLE R4 10,000 OHM.....	EA	1				*	*	*		3	15	R4		
			PORM10PCT 0.25W 0.313 IN H X 1.250 IN W X 0.250 IN D 275-1-103 (80294)	EA	4				*	*	*		3	15	CR9		
PAHZZ	5961-892-0734		SEMICONDUCTOR DEVICE, DIODE CR9 SILICON 0.105 IN X 0.265 IN 1N462 (81867)	EA	REF				*	*	*		3	15	CR10		
PAHZZ	5961-892-0734		SEMICONDUCTOR DEVICE, DIODE CR10..... SILICON 0.105 IN X 0.265 IN 1N462 (81867)	EA	REF				*	*	*		3	15	CR11		
PAHZZ	5961-892-0734		SEMICONDUCTOR DEVICE, DIODE CR11..... SILICON 0.105 IN X 0.265 IN 1N462 (81867)	EA	REF				*	*	*		3	15	CR12		
PAHZZ	5961-892-0734		SEMICONDUCTOR DEVICE, DIODE CR12..... SILICON 0.105 IN X 0.265 IN 1N462 (81867)	EA	REF				*	*	*		3	15	CR1		
PAHZZ	5961-226-7535		SEMICONDUCTOR DEVICE, DIODE CR1 SILICON 0.140 IN X 0.210 IN X 0.220 IN T1600C (96234)	EA	8				*	*	*		3	15	CR2		
PAHZZ	5961-226-7535		SEMICONDUCTOR DEVICE, DIODE CR2 SILICON 0.140 IN X 0.210 IN X 0.220 IN T1600C (96214)	EA	REF				*	*	*		3	15	CR3		
PAHZZ	5961-226-7535		SEMICONDUCTOR DEVICE, DIODE CR3 SILICON 0.140 IN X 0.210 IN X 0.220 IN T1600C (96214)	EA	REF				*	*	*		3	15	CR4		
PAHZZ	5961-226-7535		SEMICONDUCTOR DEVICE, DIODE CR4 SILICON 0.140 IN X 0.210 IN X 0.220 IN T1600C (96214)	EA	REF				*	*	*		3	15	CR5		
PAHZZ	5961-226-7535		SEMICONDUCTOR DEVICE, DIODE CR5 SILICON 0.140 IN X 0.210 IN X 0.220 IN T1600C (96214)	EA	REF				*	*	*		3	15	CR6		
PAHZZ	5961-226-7535		SEMICONDUCTOR DEVICE, DIODE CR6 SILICON 0.140 IN X 0.210 IN X 0.220 IN T1600C (96214)	EA	REF				*	*	*		3	15	CR7		
PAHZZ	5961-226-7535		SEMICONDUCTOR DEVICE, DIODE CR7 SILICON 0.140 IN X 0.210 IN X 0.220 IN T1600C (96214)	EA	REF				*	*	*		3	15	CR8		
PAHZZ	5961-226-7535		SEMICONDUCTOR DEVICE, DIODE CR8 SILICON 0.140 IN X 0.210 IN X 0.220 IN T1600C (96214)	EA	REF				*	*	*		3	15	T5		
PAHZZ	5905-860-0801		TRANSFORMER, AUDIO FREQUENCY T5 1500 OHM PRI, 600 OHM SECD IMPEDANCE FULLY INCLOSED CASE 0.410 IN LG X 0.310 IN W X	EA	1				*	*	*		3	15			
			CONTINUED														

SECTION V

TM11-5805-347-24P

(1) SMR CODE	(2) FEDERAL STOCK NUMBER	(3) DESCRIPTION REFERENCE NUMBER & MFR. CODE USABLE ON CODE	(4) UNIT OF MEAS	(5) QTY INC IN UNIT	(6) 30-DAY DS MAINT ALLOWANCE			(7) 30-DAY GS MAINT ALLOWANCE			(8) 1-YR ALW PER 100 EQUIP CNTGCT	(9) DEPOT MAINT ALW PER 100 EQUIP	(10) ILLUSTRATION	
					(a)	(b)	(c)	(a)	(b)	(c)			(a)	(b)
					1-20	21-50	51-100	1-20	21-50	51-100			FIGURE NO.	ITEM NO.
		CONTINUED												
PAHZZ	5950-855-9413	0.485 IN H SPS2 (81095) TRANSFORMER, AUDIO FREQUENCY T1 LINE... TYPE 4000 OHM PRI, 600 OHM SECD IMPEDANCE FULLY INCLOSED CASE 0.781 IN LG X 0.875 IN W X 0.531 IN H	EA	1				*	*	*		3	15	T1
PAHZZ	5950-860-0800	MMTIIM (00348) TRANSFORMER, AUDIO FREQUENCY T2 10,000... OHM PRI, 10,000 OHM SECD IMPEDANCE FULLY INCLOSED CASE 0.410 IN LG X 0.310 IN W X 0.465 IN H	EA	5				*	*	*		3	15	T2
PAHZZ	5950-860-0800	SP66 (81095) TRANSFORMER, AUDIO FREQUENCY T3 10,000... OHM PRI, 10,000 OHM SECD IMPEDANCE FULLY INCLOSED CASE D.410 IN LG X 0.310 IN W X 0.465 IN H	EA	REF				*	*	*		3	15	T3
PAHZZ	5950-860-0800	SP66 (81095) TRANSFORMER, AUDIO FREQUENCY T4 10,000... OHM PRI, 10,000 OHM SECD IMPEDANCE FULLY INCLOSED CASE 0.410 IN LG X 0.310 IN W X 0.465 IN H	EA	REF				*	*	*		3	15	T4
PAHZZ	5950-860-0800	SP66 (81095) TRANSFORMER, AUDIO FREQUENCY T6 10,000... OHM PRI, 10,000 OHM SECD IMPEDANCE FULLY INCLOSED CASE 0.410 IN LG X 0.310 IN W X 0.465 IN H	EA	REF				*	*	*		3	15	T6
PAHZZ	5950-860-0800	SP66 (81095) TRANSFORMER, AUDIO FREQUENCY T7 10,000... OHM PRI, 10,000 OHM SECD IMPEDANCE FULLY INCLOSED CASE 0.410 IN LG X 0.310 IN W X 0.465 IN H	EA	REF				*	*	*		3	15	T7
PAHZZ	5961-8536094	SP66 (81095) TRANSISTOR Q1 GERMANIUM 0.250 IN LG X... 0.362 IN DIA ST114 (96238)	EA	4				*	*	*		2	15	Q1
PAHZZ	5961-853-6094	TRANSISTOR Q2 GERMANIUM 0.250 IN LG X... 0.362 IN DIA ST114 (96238)	EA	REF				*	*	*		2	15	Q2
PAHZZ	5961-853-6094	TRANSISTOR Q5 GERMANIUM 0.250 IN LG X... 0.362 IN DIA ST114 (96238)	EA	REF				*	*	*		2	15	Q5
PAHZZ	5961-853-6094	TRANSISTOR Q7 GERMANIUM 0.250 IN LG X... 0.362 IN DIA ST114 (96238)	EA	REF				*	*	*		2	15	Q7
PAHZZ	5961-226-7537	TRANSISTOR Q3 GERMANIUM 0.370 IN X... 0.260 IN ST130 (96238)	EA	1				*	*	*		2	15	Q3
PAHZZ	5961-226-7538	TRANSISTOR Q4 SILICON 0.370 IN X 0.260... IN ST124 (96238)	EA	4				*	*	*		2	15	Q4
PAHZZ	5961-226-7538	TRANSISTOR Q6 SILICON 0.370 IN X 0.260... CONTINUED	EA	REF				*	*	*		2	15	Q6

SECTION V

TM 11-5805-347-24P

(1) SMR CODE	(2) FEDERAL STOCK NUMBER	(3) DESCRIPTION REFERENCE NUMBER & MFR. CODE USABLE ON CODE	(4) INIT OF EAS	(5) QTY INC IN UNIT	(6) 30-DAY DS MAINT ALLOWANCE			(7) 30-DAY GS MAINT ALLOWANCE			(8) 1-YR ALW PER 100 EQUIP CNTGCT	(9) DEPOT MAINT ALW PER 100 EQUIP	(10) ILLUSTRATION	
					(a)	(b)	(c)	(a)	(b)	(c)			(a)	(b)
					1-20	21-50	51-100	1-20	21-50	51-100			FIGURE NO.	ITEM NO.
CONTINUED														
PAHZZ	5961-226-7538	IN ST124 (96238) TRANSISTOR Q8 SILICON 0.370 IN X 0.260.	EA	REF				*	*	*		2	15	Q8
PAHZZ	5961-226-7538	IN ST124 (96238) TRANSISTOR Q9 SILICON 0.370 IN X 0.260	EA	REF				*	*	*		2	15	Q9
PAHZZ	5910-834-4900	IN ST124 (96238) CAPACITOR, FIXED, ELECTROLYTIC C4.....	EA	2				*	*	*		3	17	C4
PAHZZ	5910-834-4900	TE1155 (562891) CAPACITOR, FIXED, ELECTROLYTIC C7.....	EA	REF				*	*	*		3	17	C7
XDHZZ		TE115 (56289) CAPACITOR, FIXED, PLASTIC DIELECTRIC CL..	EA	3				*	*	*			17	C1
XDHZZ		33,000 UUF PORM10PCT 100 VDCW 0.625 IN LG X 0.218 IN DIA WMF1S33 (14655) CAPACITOR, FIXED, PLASTIC DIELECTRIC C3..	EA	REF				*	*	*			17	C3
XDHZZ		33,000 UUF PORM10PCT 100 VDCW 0.625 IN LG X 0.218 IN DIA UMF1S33 (14655) CAPACITOR, FIXED, PLASTIC DIELECTRIC C5..	EA	REF				*	*	*			17	C5
PAHZZ	5910-836-9274	33,000 UUF PORM10PCT 100 VDCW 0.625 IN LG X 0.218 IN DIA WMF1S33 (14655) CAPACITOR, FIXED, PLASTIC DIELECTRIC C2..	EA	1				*	*	*		3	17	C2
PAHZZ	5910-827-1206	68,000 UUF PORM10PCT 100 VDCW 0.750 IN LG X 0.265 IN DIA WMF1S6BE (14655) CAPACITOR, FIXED, ELECTROLYTIC C8 2 UF .	EA	1				*	*	*		3	17	C8
PAHZZ	5910-827-1209	15 VDCW 0.688 IN LG X 0.250 IN DIA TE1149 (56289) CAPACITOR, FIXED, ELECTROLYTIC C9 100..	EA	1				*	*	*		3	17	C9
PAHZZ	5950-853-6047	UF 25 VDCW 1.500 IN LG X 0.437 IN DIA TE1211 (56289) REACTOR L1 250 UH INDUCTANCE 52.5 OHMS.	EA	1				*	*	*		2	17	L1
XDHZZ		DC RES 1/2 IN LG X 1-1/2 P06-52T (82549) RESISTOR, FIXED, COMPOSITION R21 27 OHMS PORM5PCT 1/2W	EA	1				*	*	*			17	R21
PAHZZ	5905-195-6806	RC20GF270J (81349) RESISTOR, FIXED, COMPOSITION R19.....	EA	1				*	*	*		3	17	R19
PAHZZ	5905-141-1268	RC20GF102J (81349) RESISTOR, FIXED, COMPOSITION R7 1600 OHM PORM5PCT 1/2W	EA	2				*	*	*		3	17	R7
PAHZZ	5905-141-1268	RC20GF162J (81349) RESISTOR, FIXED, COMPOSITION R12 1600..	EA	REF				*	*	*		3	17	R12
PAHZZ	5905-141-1130	OHM PORM5PCT 1/2W RC20GF162J (81349) RESISTOR, FIXED, COMPOSITION R4.....	EA	4				*	*	*		3	17	R4
PAHZZ	5905-141-1130	RC20GF272J (81349) RESISTOR, FIXED COMPOSITION R6.....	EA	REF				*	*	*		3	17	R6
		RC20GF272J (81349)												

(1) SMR CODE	(2) FEDERAL STOCK NUMBER	(3) DESCRIPTION REFERENCE NUMBER & MFR. CODE USABLE ON CODE	(4) UNIT OF MEAS	(5) QTY INC IN UNIT	(6) 30-DAY DS MAINT ALLOWANCE			(7) 30-DAY GS MAINT ALLOWANCE			(8) 1-YR ALW PER 100 EQUIP CNTGCT	(9) DEPOT MAINT ALW PER 100 EQUIP	(10) ILLUSTRATION	
					(a)	(b)	(c)	(a)	(b)	(c)			(a)	(b)
					1-20	21-50	51-100	1-20	21-50	51-100			FIGURE NO.	ITEM NO.
PAHZZ	5905-141-1130	RESISTOR FIXED, COMPOSITION R11..... RC20GF272J (81349)	EA	REF				*	*	*		3	17	R11
PAHZZ	5905-141-1130	RESISTOR, FIXED, COMPOSITION R15.... RC20GF272J (81349)	EA	REF				*	*	*		3	17	R15
PAHZZ	5905-279-1751	RESISTOR, FIXED, COMPOSITION R18 3000... OHM PORM5PCT 1/2W RC20GF302J (81349)	EA	1				*	*	*		3	17	R18
PAHZZ	5904-279-3504	RESISTOR, FIXED, COMPOSITION R5..... RC20GF472J (81349)	EA	2				*	*	*		3	17	R5
PAHZZ	5905-279-3504	RESISTOR, FIXED, COMPOSITION R10..... RC20GF472J (81349)	EA	REF				*	*	*		3	17	R10
PAHZZ	5905-185-8510	RESISTOR, FIXED, COMPOSITION R2 10,000... OHM PORM5PCT 1/2W RC20GF103J (81349)	EA	2				*	*	*		3	17	R2
PAHZZ	5905-185-8510	RESISTOR, FIXED, COMPOSITION R17 10,000... OHM PORM5PCT 1/2W RC20GF103J (81349)	EA	REF				*	*	*		3	17	R17
PAHZZ	5905-279-3499	RESISTOR, FIXED, COMPOSITION R9..... RC20GF273J (81349)	EA	2				*	*	*		3	17	R9
PAHZZ	5905-279-3499	RESISTOR, FIXED, COMPOSITION R14..... RC20GF273J (81349)	EA	REF				*	*	*		3	17	R14
XDHZZ		RESISTOR, FIXED, COMPOSITION R16 56,000... OHM PORM5PCT 1/2W RC20GF563J (81349)	EA	1				*	*	*			17	R16
PAHZZ	5905-114-5489	RESISTOR, FIXED, COMPOSITION R3..... RC20GF823J (81349)	EA	3				*	*	*		3	17	R3
PAHZZ	5905-114-5489	RESISTOR, FIXED, COMPOSITION R8..... RC20GF823J (81349)	EA	REF				*	*	*		3	17	R8
PAHZZ	5905-114-5489	RESISTOR, FIXED, COMPOSITION R13..... RC20GF823J (81349)	EA	REF				*	*	*		3	17	R13
XDHZZ		RESISTOR, VARIABLE R1 5000 OHM..... PORM10PCT 0.25 W 0.313 IN LG X 1.250 IN W X 0.280 IN D 275-A-502 (80294)	EA	1				*	*	*			17	R1
XDHZZ		RESISTOR, VARIABLE R22 1 MEG PORM20PCT... 0.2W 0.313 IN H X 1.250 IN W X 0.250 IN D 276-1-105 (80294)	EA	1				*	*	*			17	R22
PAHZZ	5961-556-2091	SEMICONDUCTOR DEVICE, DIODE CR1..... GERMANIUM 0.300 IN LG X 0.140 IN DIA AN270 (81349)	EA	2				*	*	*		3	17	CR1
PAHZZ	5961-556-2091	SEMICONDUCTOR DEVICE, DIODE CR2... GERMANIUM 0.300 IN LG X 0.140 IN DIA IN270 (81349)	EA	REF				*	*	*		3	17	CR2
PAHZZ	5950-860-0800	TRANSFORMER, AUDIO FREQUENCY T1..... SP66 (81095)	EA	1				*	*	*		3	17	T1
PAHZZ	5961-853-6094	TRANSISTOR Q1..... ST114 (96238)	EA	4				*	*	*		2	17	Q1
PAHZZ	5961-853-6094	TRANSISTOR Q2..... ST114 (96238)	EA	REF				*	*	*		2	17	Q2
PAHZZ	5961-853-6094	TRANSISTOR Q3..... ST114 (96238)	EA	REF				*	*	*		2	17	Q3
PAHZZ	5961-853-6094	TRANSISTOR Q5..... ST114 (96238)	EA	REF				*	*	*		2	17	Q5

SECTION V

(1) SMR CODE	(2) FEDERAL STOCK NUMBER	(3) DESCRIPTION REFERENCE NUMBER & MFR. CODE USABLE ON CODE	(4) UNIT OF MEAS	(5) QTY INC IN UNIT	(6) 30-DAY DS MAINT ALLOWANCE			(7) 30-DAY L MAINT ALLOWANCE			(8) 1-YR ALW PER EQUIP CHTGCY	(9) DEPOT ALW PER EQUIP	(10) ILLUSTRATION	
					(a)	(b)	(c)	(a)	(b)	(c)			(a)	(b)
					1-20	21-50	51-100	1-20	21-50	51-100			FIGURE NO	ITEM NO
PAHZZ	5961-226-7538	TRANSISTOR Q4..... ST124 (96238)	EA	1				*	*	*	2	17	Q6	
XDHZZ		CONNECTOR, RECEPTACLE, ELECTRICAL J1 22. CONT STRAIGHT SHAPE 4-9/32 IN LG X 7/16 IN W X 21/64 IN H 2VH221AK3 (05574)	EA	1				*	*	*			J1	
XDHZZ		CAPACITOR, FIXED, PLASTIC DIELECTRIC C8.. WMP1S33 (14655)	EA	2				*	*	*		22	C8	
XDH??		CAPACITOR, FIXED, PLASTIC DIELECTRIC C9.. WMP1S33 (14655)	EA	REF				*	*	*		22	C9	
PAHZZ	5910-682-3030	CAPACITOR, FIXED, PLASTIC DIELECTRIC C11. 100,000 UUF PORM10PCT 100VDCW 0.875 IN LG X 0.281 IN DIA WMF1P1E (14655)	EA	1				*	*	*	3	22	C11	
PAHZZ	5910-827-1206	CAPACITOR, FIXED, ELECTROLYTIC C1..... TE1149 (56289)	EA	2				*	*	*	3	22	C1	
PAHZZ	5910-827-1206	CAPACITOR, FIXED, ELECTROLYTIC C10..... TE1149 (56289)	EA	REF				*	*	*	3	22	C10	
PAHZZ	5910-985-4092	CAPACITOR, FIXED, ELECTROLYTIC C3 5 UF . 15 VDCW 0.688 IN LG X 0.250 IN DIA TE1152 (56289)	EA	4				*	*	*	3	22	C3	
PAHZZ	5910-985-4092	CAPACITOR, FIXED, ELECTROLYTIC C4 5 UF . 15 VDCW 0.688 IN LG X 0.250 IN DIA TE1152 (56289)	EA	REF				*	*	*	3	22	C4	
PAHZZ	5910-985-4092	CAPACITOR, FIXED, ELECTROLYTIC C5 5 UF . 15 VDCW 0.688 IN LG X 0.250 IN DIA TE1152 (56289)	EA	REF				*	*	*	3	22	C5	
PAHZZ	5910-985-4092	CAPACITOR, FIXED, ELECTROLYTIC C7 5 UF . 15 VDCW 0.688 IN LG X 0.250 IN DIA TE1152 (56289)	EA	REF				*	*	*	3	22	C7	
PAHZZ	5910-834-4900	CAPACITOR, FIXED, ELECTROLYTIC C6..... TE1155 (56289)	EA	1				*	*	*	3	22	C6	
PAHZZ	5910-827-1218	CAPACITOR, FIXED, ELECTROLYTIC C12 10 UF 25 VDCW 1/4 IN DIA X 0.687 IN LG TE1204 (56289)	EA	1				*	*	*	3	22	C12	
PAHZZ	5910-755-9238	CAPACITOR, FIXED, ELECTROLYTIC C2 15 UF . 25 VDCW 0.688 IN LG X 0.313 IN DIA TE1205 (56289)	EA	1				*	*	*	3	22	C2	
XDHZZ		RESISTOR, FIXED, COMPOSITION R16 100 OHM PORM5PCT 1/2W RC20GF101J (81349)	EA	2				*	*	*		22	R16	
XDHZZ		RESISTOR, FIXED, COMPOSITION R25 100 OHM PORM5PCT 1/2W RC20GF101J (81349)	EA	REF				*	*	*		22	R25	
PAHZZ	5905-279-3511	RESISTOR, FIXED, COMPOSITION R23..... RC20GF511J (81349)	EA	1				*	*	*	3	22	R23	
PAHZZ	5905-141-0723	RESISTOR, FIXED, COMPOSITION R2..... RC20GF621J (81349)	EA	1				*	*	*	3	22	R2	
PAHZZ	5905-104-8337	RESISTOR, FIXED, COMPOSITION R14 750 OHM PORM5PCT 1/2W RC20GF751J (81349)	EA	1				*	*	*	3	22	R14	
PAHZZ	5905-195-6806	RESISTOR, FIXED, COMPOSITION R4..... RC20GF102J (81349)	EA	3				*	*	*	3	22	R4	

(1) SMR CODE	(2) FEDERAL STOCK NUMBER	(3) DESCRIPTION REFERENCE NUMBER & MFR. CODE; USABLE; ON CODE	(4) UNIT OF MEAS	(5) QTY INC IN UNIT	(6) 30-DAY D5 MAINT ALLOWANCE			(7) 30-DAY G5 MAINT ALLOWANCE			(8) 1-YR ALW PER 100 EQUIP CHTGCY	(9) DEPOT ALW PER 100 EQUIP	(10) ILLUSTRATION	
					(a)	(b)	(c)	(a)	(b)	(c)			(a)	(b)
					1-20	21-50	51-100	1-20	21-50	51-100			FIGURE NO.	ITEM NO.
PAHZZ	5905-195-6806	RESISTOR, FIXED, COMPOSITION R10..... RC20GF102J (81349)	EA	REF				*	*	*		3	22	R10
PAHZZ	5905-195-6806	RESISTOR, FIXED, COMPOSITION R9..... RC20GF102J (81349)	EA	REF				*	*	*		3	22	R9
PAHZZ	5905-190-8887	RESISTOR, FIXED, COMPOSITION R5 2000... OHMS PORM5PCT 1/2W RC20F202J (81349)	EA	1				*	*	*		3	22	R5
PAHZZ	5905-279-1876	RESISTOR, FIXED, COMPOSITION R9 2200... OHMS PORM5PCT 1/2W RC20GF222J (81349)	EA	1				*	*	*		3	22	R9
PAHZZ	5905-279-1877	RESISTOR, FIXED, COMPOSITION R26..... RC20GF242J (81349)	EA	1				*	*	*		3	22	R26
PAHZZ	5905-279-3504	RESISTOR, FIXED, COMPOSITION R6..... RC20GF472J (81349)	EA	2				*	*	*		3	22	R6
PAHZZ	5905-279-3504	RESISTOR, FIXED, COMPOSITION R24..... RC20GF472J (81349)	EA	REF				*	*	*		3	22	R24
PAHZZ	5905-195-6453	RESISTOR, FIXED, COMPOSITION R28..... RC20GFF562J (81349)	EA	1				*	*	*		3	22	R28
PAHZZ	55905-141-0594	RESISTOR, FIXED, COMPOSITION R8 6200... OHMS PORM5PCT 1/2W RC20GF622J (81349)	EA	1				*	*	*		3	22	R8
PAHZZ	5905-249-4195	RESISTOR, FIXED, COMPOSITION R13 7500... OHM, PORM5PCT 1/2W RC20GF752J (81349)	EA	1				*	*	*		3	22	R13
PAHZZ	5905-185-8510	RESISTOR, FIXED, COMPOSITION R7..... RC20GF103J (81349)	EA	2				*	*	*		3	22	R7
PAHZZ	5905-185-8510	RESISTOR, FIXED, COMPOSITION R15..... RC20GF103J (81349)	EA	REF				*	*	*		3	22	R15
PAHZZ	5905-279-2616	RESISTOR, FIXED, COMPOSITION R1 15,000... OHMS PORM5PCT 1/2W RC20GF153J (81349)	EA	1				*	*	*		3	22	R1
PAHZZ	5905-192-0649	RESISTOR, FIXED, COMPOSITION R11 20000... OHMS PORM5PCT 1/2W RC20GF203J (81349)	EA	1				*	*	*		3	22	R11
PAHZZ	5905-171-2004	RESISTOR, FIXED, COMPOSITION R3 220001... OHMS PORM5PCT 1/2W RC20GF223J (81349)	EA	1				*	*	*		3	22	R3
PAHZZ	5905-111-4753	RESISTOR, FIXED, COMPOSITION R27 24000... OHM PORM5PCT 1/2W RC20GF243J (81349)	EA	1				*	*	*		3	22	R27
PAHZZ	5905-254-9201	RESISTOR, FIXED, COMPOSITION R17 47000... OHM 1/2W RC20GF473J (81349)	EA	2				*	*	*		3	22	R17
PAHZZ	5905-254-9201	RESISTOR, FIXED, COMPOSITION R18 47000... OHM 1/2W RC20GF473J (81349)	EA	REF				*	*	*		3	22	R18
XDHZZ		RESISTOR, VARIABLE R12..... 275-1-502 (83294)	EA	1				*	*	*			22	R12
PAHZZ	5961-5562091	SEMICONDUCTOR DEVICE, DIODE CR11..... 1N270 (81349)	EA	5				*	*	*		3	22	CR1
PAHZZ	5961-556-2091	SEMICONDUCTOR DEVICE, DIODE CR2..... 1N270 (81349)	EA	REF				*	*	*		3	22	CR2

SECTION V

TM11-5805-347-24P

(1) SMR CODE	(2) FEDERAL STOCK NUMBER	(3) DESCRIPTION REFERENCE NUMBER & MFR. CODE USABLE ON CODE	(4) UNIT OF MEAS	(5) QTY INC IN UNIT	(6) 30-DAY DS MAINT ALLOWANCE			(7) 30-DAY GS MAINT ALLOWANCE			(8) 1-YR ALW PER 100 EQUIP CNTGCT	(9) DEPOT MAINT ALW PER 100 EQUIP	(10) ILLUSTRATION	
					(a)	(b)	(c)	(a)	(b)	(c)			(a)	(b)
					1-20	21-50	51-100	1-20	21-50	51-100			FIGURE NO.	ITEM NO.
PAHZZ	5961-556-2091	SEMICONDUCTOR DEVICE, DIODE CR3..... IN270 (81349)	EA	REF				*	*	*		3	22	CR3
PAHZZ	5961-556-2091	SEMICONDUCTOR DEVICE, DIODE CR4.... IN270 (81349)	EA	REF				*	*	*		3	22	CR4
PAHZZ	5961-556-2091	SEMICONDUCTOR DEVICE, DIODE CR5..... IN270 (81349)	EA	REF				*	*	*		3	22	CR5
XDHZZ		TRANSFORMER, AUDIO FREQUENCY T1 600 OHM PRI IMPEDANCE RATING 600 OHM SECIMPEDANCE RATING FULLY ENCLOSED FRAME 0.531 IN H X 0.875 IN LG X 0.781 IN W O/A MMT1M (00348)	EA	1				*	*	*			22	T1
PAHZZ	5950-853-5973	TRANSFORMER, DISCRIMINATOR T2 1335 CYC.. PEAK FREQ SHIELDED 1.750 IN LG X 1.250 IN W X 0.750 IN H A7190-2 (96238)	EA	1				*	*	*		3	22	T2
PAHZZ	5950-853-5972	TRANSFORMER, DISCRIMINATOR T3 1215 CYC.. PEAK FREQ SHIELDED 1.750 IN LG X 1.250 IN W X 0.750 IN H A7190-1 (96238)	EA	1				*	*	*		3	23	T3
PAHZZ	5961-853-6094	TRANSISTOR Q1..... ST114 (96238)	EA	5				*	*	*		2	22	Q1
PAHZZ	5961-853-6094	TRANSISTOR Q2..... ST114 (96238)	EA	REF				*	*	*		2	22	Q2
PAHZZ	5961-853-6094	TRANSISTOR Q3..... ST114 (96238)	EA	REF				*	*	*		2	22	Q3
PAHZZ	5961-853-6094	TRANSISTOR Q4..... ST114 (96238)	EA	REF				*	*	*		2	22	Q4
PAHZZ	5961-853-6094	TRANSISTOR Q8..... ST114 (96238)	EA	REF				*	*	*		2	22	Q8
PAHZZ	5961-226-4635	TRANSISTOR Q5 GERMANIUM 0.382 IN X.... 0.460 IN ST118 (96238)	EA	2				*	*	*		2	22	Q5
PAHZZ	5961-226-4635	TRANSISTOR Q7 GERMANIUM 0.382 IN X.... 0.460 IN ST118 (96238)	EA	REF				*	*	*		2	22	Q7
PAHZZ	5961-226-7538	TRANSISTOR Q6..... ST124 (96238)	EA	1				*	*	*		2	22	Q6
PAHZZ	5910-727-4005	CAPACITOR, FIXED, MICA DIELECTRIC C5.... 1500 UUF PORM5PCT 500 VDCW CM30E152J (81349)	EA	1				*	*	*		3	18	C5
XDHZZ		CAPACITOR, FIXED, MICA DIELECTRIC C6..... 4300 UUF PORM5PCT 500 VDCU CM35E432N3 (81349)	EA	1				*	*	*			18	C6
XDHZZ		CAPACITOR, FIXED, MICA DIELECTRIC C10.. 10.000 UUF PORM5PCT 300 VDCW CM35F103JP3 (81349)	EA	1				*	*	*			18	C10
PAHZZ	5910-615-9975	CAPACITOR, FIXED, PLASTIC DIELECTRIC C1.. 100,000 UUF PORM5PCT 100 VDCW 1 IN LG X 0.400 IN DIA HD4-1-1008 (00686)	EA	2				*	*	*		3	18	C1
PAHZZ	5910-615-9975	CAPACITOR, FIXED, PLASTIC DIELECTRIC C2.. CONTINUED	EA	REF				*	*	*		3	18	C2

SECTION V

TM 11-5805-347-24P

(1) SMR CODE	(2) FEDERAL STOCK NUMBER	(3) DESCRIPTION REFERENCE NUMBER & MFR. CODE USABLE ON CODE	(4) UNIT OF MEAS	(5) QTY INC IN UNIT	(6) 30-DAY DS MAINT ALLOWANCE			(7) 30-DAY GS MAINT ALLOWANCE			(8) 1-YR ALW PER 100 EQUIP CNTGCT	(9) DEPOT MAINT ALW PER 100 EQUIP	(10) ILLUSTRATION	
					(a)	(b)	(c)	(a)	(b)	(c)			(a)	(b)
					1-20	21-50	51-100	1-20	21-50	51-100			FIGURE NO.	ITEM NO.
		CONTINUED												
PAHZZ	5910-682-3030	100.00 UUF PORMIPCT 100 VDCW 1 IN LG X 0.400 IN DIA HD4-1-1008 (00686) CAPACITOR, FIXED, PLASTIC DIELECTRIC C7. WMF11P1E (14655)	EA	2				*	*	*	3	18	C7	
PAHZZ	5910-682-3030	CAPACITOR, FIXED, PLASTIC DIELECTRIC C8. WMF11P1E (14655)	EA	REF				*	*	*	3	18	C8	
PAHZZ	5910-845-8675	CAPACITOR, FIXED, ELECTROLYTIC C12 1 UF 15 VDCW 0.688 LG X 0.250 IN DIA TE1148 (56289)	EA	1				*	*	*	3	18	C12	
PAHZZ	5910-834-4900	CAPACITOR, FIXED ELECTROLYTIC C13. TE1155 (56289)	EA	1				*	*	*	3	18	C13	
PAHZZ	5910-837-4582	CAPACITOR, FIXED, ELECTROLYTIC C11. TE1206 (56289)	EA	1				*	*	*	3	18	C11	
PAHZZ	5910-827-1211	CAPACITOR, FIXED, ELECTROLYTIC C9 25 UF. VDCW 0.749 IN LG X 0.437 IN DIA TE1207 (56289)	EA	1				*	*	*	3	18	C9	
XDHZZ		CAPACITOR, FIXED, MICA DIELECTRIC C3 30. UUF PORM5PCT 300 VDCW CM15C300JPC (81349)	EA	1				*	*	*		18	C3	
PAHZZ	5910-892-7395	CAPACITOR, FIXED, MICA DIELECTRIC C3 33. UUF PORM5PCT 300 VDCW CM15C330JPC (81349)	EA	1				*	*	*	3	18	C3	
XDHZZ		CAPACITOR, FIXED MICA DIELECTRIC C3 36. UUF PORM5PCT 300 VDCW CM15C360JPC (81349)	EA	1				*	*	*		18	C3	
XDHZZ		CAPACITOR, FIXED MICA DIELECTRIC C3 39. UUF PORM5PCT 300 VDCW CM15C390JPC (81349)	EA	1				*	*	*		18	C3	
XDHZZ		CAPACITOR, FIXED MICA DIELECTRIC C3 43. UUF PORM5PCT 300 VDCW CM15C430J (81349)	EA	1				*	*	*		18	C3	
PAHZZ	5910-804-2378	CAPACITOR, FIXED MICA DIELECTRIC C3 47. UUF, PORM5PCT 300 VDCW CM15C470J (81349)	EA	1				*	*	*	3	18	C3	
XDHZZ		CAPACITOR, FIXED MICA DIELECTRIC C3 51. UUF PORM5PCT 300 VDCW CM15C510JP3 (81349)	EA	1				*	*	*		18	C3	
XDHZZ		CAPACITOR, FIXED MICA DIELECTRIC C3 56. UUF PORM5PCT 300 VDCW CM15C560JP3 (81349)	EA	1				*	*	*		18	C3	
XDHZZ		CAPACITOR, FIXED MICA DIELECTRIC C3 62. UUF PORM5PCT 300 VDCW CM15C620J (81349)	EA	1				*	*	*		18	C3	
XDHZZ		CAPACITOR, FIXED MICA DIELECTRIC C3 68. PORM5PCT 300 VDCW CM15C680JPC3 (81349)	EA	1				*	*	*		18	C3	
XDHZZ		CAPACITORS, FIXED, MICA DIELECTRIC C3 75. UUF PORM5PCT 300 VDCW CM15C750J (81349)	EA	1				*	*	*		18	C3	
PAHZZ	5910-823-1793	CAPACITOR, FIXED, MICA DIELECTRIC C3 82. CONTINUED	EA	1				*	*	*	3	18	C3	

SECTION V

S M R C O D E	FEDERAL STOCK NUMBER	DESCRIPTION REFERENCE NUMBER & MFR. CODE	USABLE ON CODE	(4) UNIT OF MEAS	(5) QTY INC IN UNIT	(6) 30-DAY DS MAINT ALLOWANCE			(7) 30-DAY GS MAINT ALLOWANCE			(8) 1-YR ALW PER 100 EQUIP CNTGCTY	(9) DEPOT MAINT ALW PER 100 EQUIP	(10) ILLUSTRATION	
						(a)	(b)	(c)	(a)	(b)	(c)			(a)	(b)
						1-20	21-50	51-100	1-20	21-50	51-100			FIGURE NO.	ITEM NO.
CONTINUED															
IPAHZZ	5910-666-5252	UUF PORM5PCT 300 VDCW CM15C820JP3 (81349) CAPACITOR,-FIXED, MICA DIELECTRIC	C 3 9 1	EA	1				*	*	*		3	18	C3
IPAHZZ	5910-951-7074	UUF PORM5PCT 300 VDCW CM15C910J (81349) CAPACITOR, FIXED, MICA DIELECTRIC	C 3 1 0 0	EA	1				*	*	*		3	18	C3
XDHZZ		UUF PORM5PCT 300 VDCW CM15F101JP3 (81349) CAPACITOR, FIXED, MICA DIELECTRIC	C 3 1 1 0	EA	1				*	*	*			18	C3
XDHZZ		UUF PORM5PCT 300 VDCW CM15C111J (81349) CAPACITOR, FIXED, RICA DIELECTRIC	C 3 1 2 0	EA	1				*	*	*			18	C3
PAHZZ	5910-984-8370	UUF PORM5PCT 300 VDCW CM15C121JPC (81349) CAPACITOR, FIXED, MICA DIELECTRIC	C 3 1 3 0	EA	1				*	*	*		3	18	C3
PAHZZ	5910-043-8410	UUF PORM5PCT 300 VDCW CM15F131JP3 (81349) CAPACITOR, FIXED, MICA DIELECTRIC	C 3 1 5 0	EA	1				*	*	*		3	18	C3
PAHZZ	5910-984-8369	UUF PORM5PCT 300 VDCW CM15F151JP3 (81349) CAPACITOR, FIXED, MICA DIELECTRIC	C 3 1 6 0	EA	1				*	*	*		3	18	C3
XDHZZ		UUF PORM5PCT 300 VDCW CM15F161JP3 (81349) CAPACITOR, FIXED, MICA DIELECTRIC	C 3 1 8 0	EA	1				*	*	*			18	C3
XDHZZ		UUF PORM5PCT 300 VDCW CM15F181JP3 (81349) CAPACITOR, FIXED, MICA DIELECTRIC	C 4 . . .	EA	1				*	*	*			18	C4
PAHZZ	5910-023-9871	UUF PORM5PCT 300 VDCW CM15F181JP3 (81349) CAPACITOR, FIXED, MICA DIELECTRIC	C 4 2 0 0	EA	2				*	*	*		3	18	C4
PAHZZ	5910-023-9871	UUF PORM5PCT 300 VDCW CM15F201JP3 (81349) CAPACITOR, FIXED, MICA DIELECTRIC	C 3 2 0 0	EA	REF				*	*	*		3	18	C3
PAHZZ	5910-984-4142	UUF PORM5PCT 300 VDCW CM15F201JP3 (81349) CAPACITOR, FIXED, MICA DIELECTRIC	C 4 2 2 0	EA	1				*	*	*		3	18	C4
PAHZZ	5910-984-4144	UUF PORM5PCT 300 VDCW CM15F221JP3 (81349) CAPACITOR, FIXED, MICA DIELECTRIC	C 4 2 4 0	EA	1				*	*	*		3	18	C4
XDHZZ		UUF PORM5PCT 5PCT 300 VDCW CM15241JP3 (81349) CAPACITOR, FIXED, MICA DIELECTRIC	C 4 2 7 0	EA	1				*	*	*			18	C4
PAHZZ	5910-951-7063	UUF PORM5PCT 500 VDCW CM15E271J (72136) CAPACITOR, FIXED, MICA DIELECTRIC	C 4 3 0 0	EA	1				*	*	*		3	18	C4
PAHZZ	5910-984-5253	UUF PORM5PCT 300 VDCW CM15F301JP3 (81349) CAPACITOR, FIXED, MICA DIELECTRIC	C 4 3 3 0	EA	1				*	*	*		3	18	C4
XDHZZ		UUF PORM5PCT 300 VDCW CM15F331JP3 (81349) CAPACITOR, FIXED, MICA DIELECTRIC	C 4 3 6 0	EA	1				*	*	*			18	C4
		UUF PORM5PCT 300 VDCW CM15F361JP3 (81349)													

SECTION V

TM11-5805-347-24P

(1) SMR CODE	(2) FEDERAL STOCK NUMBER	(3) DESCRIPTION REFERENCE NUMBER & MFR. CODE USABLE ON CODE	(4) UNIT OF MEAS	(5) QTY INC IN UNIT	(6) 30-DAY DS MAINT ALLOWANCE			(7) 30-DAY GS MAINT ALLOWANCE			(8) 1-YR ALW PER 100 EQUIP CNTGCT	(9) DEPOT ALW PER 100 EQUIP	(10) ILLUSTRATION	
					(a)	(b)	(c)	(a)	(b)	(c)			(a)	(b)
					1-20	21-50	51-100	1-20	21-50	51-100			FIGURE NO.	ITEM NO.
PAHZZ	5910-088-0385	CAPACITOR, FIXED, MICA DIELECTRIC C.4 390 UUF PORM5PCT 300 VDCW CM15F391JP3 (81349)	EA	1				*	*	*		3	18	C6
PAHZZ	5910-950-5683	CAPACITOR, FIXED, MICA DIELECTRIC C4 430 UUF PORM5PCT 300 VDCW CM15F431JP3 (81349)	EA	1				*	*	*		3	18	C4
XDHZZ		REACTOR L1 1 HY INDUCTANCE 210 OHM DC. RESISTOR IN LG X 1.063 IN DIA P06-201 (81349)	EA	1				*	*	*			18	L1
PAHZZ	5905-114-5388	RESISTOR, FIXED, COMPOSITION R11 22 OHM. PORM5PCT 1/2W RC20GF220J (81349)	EA	1				*	*	*		3	18	R11
XDHZZ		RESISTOR, FIXED, COMPOSITION R16..... RC20GF101J (81349)	EA	2				*	*	*			18	R16
XDHZZ		RESISTOR, FIXED, COMPOSITION R30..... RC20GF101J (813491)	EA	REF				*	*	*			18	R30
PAHZZ	5905-192-3971	RESISTOR, FIXED, COMPOSITION R23..... RC20GF331J (81349)	EA	1				*	*	*		3	18	R23
PAHZZ	5905-279-1890	RESISTOR, FIXED, COMPOSITION R32 390 OHM PORM5PCT 1/2W RC20GF391J (81349)	EA	1				*	*	*		3	18	R32
PAHZZ	5905-121-9922	RESISTOR, FIXED, COMPOSITION R33 430 OHM PORM5PCT 1/2W RC20GF431J (81349)	EA	1				*	*	*		3	18	R33
PAHZZ	5905-279-1757	RESISTOR, FIXED, COMPOSITION R14 1500... OHM PORM5PCT 1/2W RC20GF152J (81349)	EA	1				*	*	*		3	18	R14
PAHZZ	5905-279-1751	RESISTOR, FIXED, COMPOSITION R3..... RC20GF302J (81349)	EA	3				*	*	*		3	18	R3
PAHZZ	5905-279-1751	RESISTOR, FIXED, COMPOSITION R8..... RC20GF302J (81349)	EA	REF				*	*	*		3	18	R8
PAHZZ	5905-279-1751	RESISTOR, FIXED, COMPOSITION R12..... RC20GF302J (81349)	EA	REF				*	*	*		3	18	R12
PAHZZ	5905-104-8438	RESISTOR, FIXED, COMPOSITION R31 3300... OHM PORM5PCT 1/2W RC20GF332J (81349)	EA	1				*	*	*		3	18	R31
PAHZZ	5905-279-3505	RESISTOR, FIXED, COMPOSITION R18 3900... OHM PORM5PCT 1/2W RC20GF392J (81349)	EA	1				*	*	*		3	18	R18
PAHZZ	5905-111-4744	RESISTOR, FIXED, COMPOSITION R22..... RC20GF512J (81349)	EA	2				*	*	*		3	18	R22
PAHZZ	5905-111-4744	RESISTOR, FIXED, COMPOSITION R24..... RC20GF512J (81349)	EA	REF				*	*	*		3	18	R24
PAHZZ	5905-141-1165	RESISTOR, FIXED, COMPOSITION R19 6800... OHM PORM5PCT 1/2W RC20GF682J (81349)	EA	1				*	*	*		3	18	R19
PAHZZ	5905-185-8510	RESISTOR, FIXED, COMPOSITION R10..... RC20GF103J (81349)	EA	3				*	*	*		3	18	R10
PAHZZ	5905-185-8510	RESISTOR, FIXED, COMPOSITION R13..... RC20GF103J (81349)	EA	REF				*	*	*		3	18	R13
PAHZZ	5905-185-8510	RESISTOR, FIXED, COMPOSITION R15..... RC20GF103J (81349)	EA	REF				*	*	*		5	18	R15

SECTION V

TM 11-5805-347-24P

(1) SMR CODE	(2) FEDERAL STOCK NUMBER	(3) DESCRIPTION REFERENCE NUMBER & MFR. CODE USABLE ON CODE	(4) UNIT OF MEAS	(5) QTY INC IN UP	(6) 30-DAY DS MAINT ALLOWANCE			(7) 30-DAY GS MAINT ALLOWANCE			(8) 1-YR ALW PER 100 EQUIP CNTCCY	(9) DEPOT MAINT ALW PER 100 EQUIP	(10) ILLUSTRATION	
					(a)	(b)	(c)	(a)	(b)	(c)			(a)	(b)
					1-20	21-50	51-100	1-20	21-50	51-100			FIGURE NO	ITEM NO
PAHZZ	5905-279-2616	RESISTOR, FIXED, COMPOSITION R 25..... RC20GF153J (81349)	EA	3				*	*	*		3	18	R25
PAHZZ	5905-279-2616	RESISTOR, FIXED, COMPOSITION R28..... RC20GF153J (81349)	EA	REF				*	*	*		3	18	R28
PAHZZ	5905-279-2616	RESISTOR, FIXED, COMPOSITION R29..... RC20GF153J (81349)	EA	REF				*	*	*		3	18	R29
PAHZZ	5905-171-2004	RESISTOR, FIXED, COMPOSITION R20..... RC20GF223J (81349)	EA	2				*	*	*		3	18	R20
PAHZZ	5905-171-2004	RESISTOR, FIXED, COMPOSITION R21..... RC20GF223J (81349)	EA	REF				*	*	*		3	18	R21
PAHZZ	5905-935-8543	RESISTOR, FIXED, COMPOSITION R17 30,000. OHM PORM5PCT 1/2W RC20GF303J (81349)	EA	1				*	*	*		3	18	R17
PAHZZ	5905-556-3783	RESISTOR, FIXED, FILM R4 30,100 OHM.... PORM10PCT 1/2W RN70B3012F (81349)	EA	2				*	*	*		3	18	R4
PAHZZ	5905-556-3783	RESISTOR, FIXED, FILM R6 30,100 OHM.... PORM1PCT 1/2W RN70B3012F (81349)	EA	REF				*	*	*		3	18	R6
PAHZZ	5905-106-9345	RESISTOR, FIXED, COMPOSITION R9 68,000.. OHM PORM5PCT 1/2W RC20GF683J (81349)	EA	1				*	*	*		3	18	R9
XDHZZ		RESISTOR, FIXED, FILM R5 100,000 OHM.... PORM1PCT 1/2W RN70B1003F (81349)	EA	2				*	*	*			18	R5
XDHZZ		RESISTOR, FIXED, FILM R7 100,000 OHM.... PORM1PCT 1/2W RN70B1003F (81349)	EA	REF				*	*	*			18	R7
PAHZZ	5905-826-2291	RESISTOR, VARIABLE A1 1000 OHM..... PORM10PCT .25W 5/16 IN H X 1-1/4 IN W X 1/4 IN D	EA	1				*	*	*		3		A1
PAHZZ	5905-883-6313	RESISTOR, VARIABLE R2..... 75-1-102 (80294)	EA	1				*	*	*		3	18	R2
PAHZZ	5905-190-8881	RESISTOR, FIXED, COMPOSITION R26 1800.. OHM PORM5PCT 1/2W RC20GF182J (81349)	EA	1				*	*	*		3	18	R26
PAHZZ	5905-190-8887	RESISTOR, FIXED, COMPOSITION R 26..... RC20GF202J (81349)	EA	1				*	*	*		3	18	R26
PAHZZ	5961-892-0734	SEMICONDUCTOR DEVICE, DIODE CR1..... 1N462 (81867)	EA	2				*	*	*		3	18	CR1
PAHZZ	5961-892-0734	SEMICONDUCTOR DEVICE, DIODE CR2..... 1N462 (81867)	EA	REF				*	*	*		3	18	CR2
PAHZZ	5950-855-9413	TRANSFORMER, AUDIO FREQUENCY T1..... MMT11M (00348)	EA	1				*	*	*		3	18	T1
PAHZZ	5961-853-6094	TRANSISTOR Q1..... ST114 (96238)	EA	6				*	*	*		2	18	Q1
PAHZZ	5961-853-6094	TRANSISTOR Q2..... ST114 (96238)	EA	REF				*	*	*		2	18	Q2
PAHZZ	5961-853-6094	TRANSISTOR Q3..... ST114 (96238)	EA	REF				*	*	*		2	18	Q3
PAHZZ	5961-853-6094	TRANSISTOR Q4..... ST114 (96238)	EA	REF				*	*	*		2	18	Q4

SECTION V

TM 11-5805-347-24P

SMR CODE	FEDERAL STOCK NUMBER	DESCRIPTION REFERENCE NUMBER & MFR. CODE USABLE ON CODE	(4) UNIT OF MEAS	(5) QTY INC IN UNIT	(6) 30-DAY DS MAINT ALLOWANCE			(7) 30-DAY GS MAINT ALLOWANCE			(8) 1-YR ALWP PER 100 EQUIP CNTGCT	(9) DEPOT MAINT ALWP PER 100 EQUIP	(10) ILLUSTRATION	
					(a)	(b)	(c)	(a)	(b)	(c)			(a)	(b)
					1-20	21-50	51-100	1-20	21-50	51-100			FIGURE NO.	ITEM NO.
PAHZZ	5961-853-6094	TRANSISTOR Q5..... ST114 (96238)	EA	REF				*	*	*		2	18	Q5
PAHZZ	5961-853-6094	TRANSISTOR Q6..... ST114 (96238)	EA	REF				*	*	*		2	18	Q6
PAHZZ	5910-833-4900	CAPACITOR, FIXED, ELECTROLYTIC C1..... TE1155 (56283)	EA	2				*	*	*		3	20	C1
PAHZZ	5910-834-4900	CAPACITOR, FIXED, ELECTROLYTIC C12... TE1155 (56289)	EA	REF				*	*	*		3	20	C12
PAHZZ	5910-827-1209	CAPACITOR, FIXED, ELECTROLYTIC C13... TE1211 (56289)	EA	1				*	*	*		3	20	C13
PAHZZ	5910-836-9274	CAPACITOR, FIXED, PLASTIC DIELECTRIC C3... WMF1568E (14655)	EA	1				*	*	*		3	20	C3
XDHZZ		CAPACITOR, FIXED, PLASTIC DIELECTRIC C4... 22,000 UUF PORM10PCT 100 VDCW 0.625 IN LG X 0.203 IN DIA WMF1S22E (14655)	EA	1				*	*	*			20	C4
PAHZZ	5910-682-3030	CAPACITOR, FIXED, PLASTIC DIELECTRIC C14... WMF1P1E (14655)	EA	1				*	*	*		3	20	C14
XDHZZ		CAPACITOR, FIXED, MICA DIELECTRIC C5... 3000 UUF PORM5PCT 500 VDCW CR30F302JP3 (81349)	EA	1				*	*	*		3	20	C5
PAHZZ	5910-834-9721	CAPACITOR, FIXED, PLASTIC DIELECTRIC C2... WMF1P22E (14655)	EA	1				*	*	*		3	20	C2
PAHZZ	5905-114-5388	RESISTOR, FIXED, COMPOSITION R9..... RC20GF220J (81349)	EA	2				*	*	*		3	20	R9
PAHZZ	5905-114-5388	RESISTOR, FIXED, COMPOSITION R21..... RC20GF220J (81349)	EA	REF				*	*	*		3	20	R21
PAHZZ	5905-933-8543	RESISTOR, FIXED, COMPOSITION R11 33 OHM. PORM5PCT 1/2W RC20GF330J (81349)	EA	1				*	*	*		3	20	R11
XDHZZ		RESISTOR, FIXED, COMPOSITION R16..... RC20GF101J (81349)	EA	1				*	*	*			20	R16
PAHZZ	5905-252-5436	RESISTOR, FIXED, COMPOSITION R13 130 OHM PORM5PCT 1/2W RC20GF131J (81349)	EA	1				*	*	*		3	20	R13
PAHZZ	5905-104-8350	RESISTOR, FIXED, COMPOSITION R20 220 OHM PORW5PCT 1/2W RC20GF221J (81349)	EA	1				*	*	*		3	20	R20
PAHZZ	5905-121-9922	RESISTOR, FIXED, COMPOSITION R8..... RC20GF431J (81349)	EA	1				*	*	*		3	20	R8
PAHZZ	5905-195-6806	RESISTOR, FIXED, COMPOSITION R1..... RC20GF102J (81349)	EA	1				*	*	*		3	20	R1
PAHZZ	5905-279-1877	RESISTOR, FIXED, COMPOSITION R6..... RC20GF242J (81349)	EA	2				*	*	*		3	20	R6
PAHZZ	5905-279-1877	RESISTOR, FIXED, COMPOSITION R15..... RC20GF242J (81349)	EA	REF				*	*	*		3	20	R15
PAHZZ	5905-104-8348	RESISTOR, FIXED, COMPOSITION R19..... RC20GF332J (81349)	EA	1				*	*	*		3	20	R19
PAHZZ	5905-195-6453	RESISTOR, FIXED, COMPOSITION R14..... RC20GF562J (81349)	EA	1				*	*	*		3	20	R14
PAHZZ	5905-141-1165	RESISTOR, FIXED, COMPOSITION R12..... RC20GF682J (81349)	EA	1				*	*	*		3	20	R12

SECTION V

TM 11-5805-347-24P

(1) SMR CODE	(2) FEDERAL STOCK NUMBER	(3) DESCRIPTION REFERENCE NUMBER & MFR. CODE USABLE ON CODE	(4) UNIT OF MEAS	(5) QTY INC IN UNIT	(6) 30-DAY DS MAINT ALLOWANCE			(7) 30-DAY GS MAINT ALLOWANCE			(8) 1-YR ALW PER 100 EQUIP CNTG	(9) DEPOT MAINT ALW PER 100 EQUIP	(10) ILLUSTRATION	
					(a)	(b)	(c)	(a)	(b)	(c)			(a)	(b)
					1-20	21-50	51-100	1-20	21-50	51-100			FIGURE NO.	ITEM NO.
PAHZZ	5905-185-8510	RESISTOR, FIXED, COMPOSITION R2..... RC20GF103J (81349)	EA	2				*	*	*		3	20	R2
PAHZZ	5905-185-8510	RESISTOR, FIXED, COMPOSITION R4..... RC20GF103J (81349)	EA	REF				*	*	*		3	20	R4
PAHZZ	5905-279-2616	RESISTOR, FIXED, COMPOSITION R7..... RC20GF153J (81349)	EA	1				*	*	*		3	20	R7
PAHZZ	5905-192-0649	RESISTOR, FIXED, COMPOSITION R3..... RC20GF203J (81349)	EA	2				*	*	*		3	20	R3
PAHZZ	5905-192-0649	RESISTOR, FIXED, COMPOSITION R5..... RC20GF203J (81349)	EA	REF				*	*	*		3	20	R5
PAHZZ	5905-171-1998	RESISTOR, FIXED, COMPOSITION R17 33.000. OHM PORM5PCT 1/2W	EA	1				*	*	*		3	20	R.7
XDHZZ		RESISTOR, VARIABLE R18..... RC20GF333J (81349) 275-1-502 (80294)	EA	1				*	*	*			20	R18
PAHZZ	5961-892-0734	SEMICONDUCTOR DEVICE, DIODE CR1..... 1N462 (81867)	EA	1				*	*	*		3	20	CR1
PAHZZ	5961-853-6094	TRANSISTOR Q1..... ST114 (00348)	EA	5				*	*	*		2	20	Q1
PAHZZ	5961-853-6094	TRANSISTOR Q2..... ST114 (00348)	EA	REF				*	*	*		2	20	Q2
PAHZZ	5961-853-6094	TRANSISTOR Q3..... ST114 (00348)	EA	REF				*	*	*		2	20	Q3
PAHZZ	5961-853-6094	TRANSISTOR Q5..... ST114 (00348)	EA	REF				*	*	*		2	20	Q5
PAHZZ	5961-853-6094	TRANSISTOR Q6..... ST114 (00348)	EA	REF				*	*	*		2	20	Q6
PAHZZ	5961-226-4635	TRANSISTOR Q4..... ST118 (96238)	EA	1				*	*	*		2	20	Q4
XDHZZ		CAPACITOR, FIXED, MICA DIELECTRIC C5 680 UUF PORM5PCT 300 VDCW	EA	1				*	*	*			19	C5
XDHZZ		CAPACITOR, FIXED, MICA DIELECTRIC C3..... CM20F681JP3 (81349) 8200 UUF PORM5PCT 300 VDCW	EA	1				*	*	*			19	C3
XDHZZ		CAPACITOR, FIXED, MICA DIELECTRIC C8..... CM35E822J (81349)	EA	3				*	*	*			19	C8
XDHZZ		CAPACITOR, FIXED, MICA DIELECTRIC C12.... CM35F103JP3 (81349)	EA	REF				*	*	*			19	C12
XDHZZ		CAPACITOR, FIXED, MICA DIELECTRIC C13.... CW35F103JP3 (81349)	EA	REF				*	*	*			19	C13
PAHZZ	5910-543-1117	CAPACITOR FIXED, MICA DIELECTRIC C2 20, 000 UUF PORM2PCT 500 VDCW 11/32 IN D X 53/64 IN W X 53/64 IN H	EA	2				*	*	*		3	19	C2
PAHZZ	5910-543-1117	CAPACITOR, FIXED, MICA DIELECTRIC C4 20, 000 UUF PORM2PCT 500 VDCW 11/32 IN D X 53/64 IN W X 53/64 IN H	EA	REF				*	*	*		3	19	C4
PAHZZ	5910-682-3030	CAPACITOR, FIXED, PLASTIC DIELECTRIC C6.. WMF11PIE (14655)	EA	2				*	*	*		3	19	C6
PAHZZ	5910-682-3030	CAPACITOR, FIXED, PLASTIC DIELECTRIC C10. WMF11PIE (14655)	EA	REF				*	*	*		3	19	C10

(1) SMR CODE	(2) FEDERAL STOCK NUMBER	(3) DESCRIPTION REFERENCE NUMBER & MFR. CODE USABLE ON CODE	(4) UNIT OF MEAS	(5) QTY INC IN UNIT	(6) 30-DAY DS MAINT ALLOWANCE			(7) 30-DAY GS MAINT ALLOWANCE			(8) 1-YR ALW PER 100 EQUIP CNTGCCY	(9) DEPOT MAINT ALW PER 100 EQUIP	(10) ILLUSTRATION	
					(a)	(b)	(c)	(a)	(b)	(c)			(a)	(b)
					1-20	21-50	51-100	1-20	21-50	51-100			FIGURE NO.	ITEM NO.
PAHZZ	5910-834-9721	CAPACITOR, FIXED, PLASTIC DIELECTRIC C1.. WMF1P22E (14655)	EA	1				*	*	*		3	19	C1
PAHZZ	5910-845-8675	CAPACITOR, FIXED, ELECTROLYTIC C7..... TE1148 (56289)	EA	3				*	*	*		3	19	C7
PAHZZ	5910-845-8675	CAPACITOR, FIXED, ELECTROLYTIC C9..... TE1148 (56289)	EA	REF				*	*	*		3	19	C9
PAHZZ	5910-845-8675	CAPACITOR, FIXED, ELECTROLYTIC C10..... TE1148 (56289)	EA	REF				*	*	*		3	19	C10
XDHZZ		REACTOR L1 200 NH INDUCTANCE 21 OHM DC. RES 0.719 IN LG X 1.375 IN DIA 1626 (07388)	EA	2				*	*	*		2	19	L1
XDHZZ		REACTOR L2 200 NH INDUCTANCE 21 OHM DC. RES 0.719 IN LG X 1.375 IN DIA 1626 (07388)	EA	REF				*	*	*		2	19	L2
PAHZZ	5950-853-6047	REACTOR L3..... P06-52T (82549)	EA	1				*	*	*		2	19	L3
XDHZZ		RESISTOR, FIXED, COMPOSITION R4..... RC20GF101J (81349)	EA	2				*	*	*		3	19	R4
XDHZZ		RESISTOR, FIXED, COMPOSITION R9..... RC20GF101J (81349)	EA	REF				*	*	*		3	19	R9
XDHZZ		RESISTOR, FIXED, COMPOSITION R12 150 OHM PORM5PCT 1/2W RC20GF151J (81349)	EA	1				*	*	*		3	19	R12
PAHZZ	5905-104-8350	RESISTOR, FIXED, COMPOSITION R17..... RC20GF221J (81349)	EA	1				*	*	*		3	19	R17
PAHZZ	5905-279-3511	RESISTOR, FIXED, COMPOSITION R22..... RC20GF511J (81349)	EA	1				*	*	*		3	19	R22
PAHZZ	5905-279-1876	RESISTOR, FIXED, COMPOSITION R18..... RC20GF222J (81349)	EA	1				*	*	*		3	19	R18
PAHZZ	5905-111-4744	RESISTOR, FIXED, COMPOSITION R13..... RC20GF512J (81349)	EA	6				*	*	*		3	19	R13
PAHZZ	5905-111-4744	RESISTOR, FIXED, COMPOSITION R16..... RC20GF512J (81349)	EA	REF				*	*	*		3	19	R16
PAHZZ	5905-111-4741	RESISTOR, FIXED, COMPOSITION R20..... RC20GF512J (81349)	EA	REF				*	*	*		3	19	R20
PAHZZ	5905-111-4744	RESISTOR, FIXED, COMPOSITION R21..... RC20GF512J (81349)	EA	REF				*	*	*		3	19	R21
PAHZZ	5905-111-4744	RESISTOR, FIXED, COMPOSITION R23..... RC20GF512J (81349)	EA	REF				*	*	*		3	19	R23
PAHZZ	5905-111-4744	RESISTOR, FIXED, COMPOSITION R25..... RC20GF512J (81349)	EA	REF				*	*	*		3	19	R25
PAHZZ	5905-141-0600	RESISTOR, FIXED, COMPOSITION R15 8200... OHM PORM5PCT 1/2w RC20GF822J (81349)	EA	1				*	*	*		3	19	R15
PAHZZ	5905-185-8510	RESISTOR, FIXED, COMPOSITION R2..... RC20GF103J (81349)	EA	2				*	*	*		3	19	R2
PAHZZ	5905-185-8510	RESISTOR, FIXED, COMPOSITION R7..... RC20GF103J (81349)	EA	REF				*	*	*		3	19	R7
PAHZZ	5905-279-2616	RESISTOR, FIXED, COMPOSITION R11..... RC20GF153J (81349)	EA	1				*	*	*		3	19	R11
PAHZZ	5905-192-0649	RESISTOR, FIXED, COMPOSITION R3..... RC20GF203J (81349)	EA	2				*	*	*		3	19	R3

SECTION V

TM 11-5805-347-24P

(1) SMR CODE	(2) FEDERAL STOCK NUMBER	(3) DESCRIPTION REFERENCE NUMBER & MFR. CODE USABLE ON CODE	(4) UNIT OF MEAS	(5) QTY INC IN UNIT	(6) 30-DAY DS MAINT ALLOWANCE			(7) 30-DAY GS MAINT ALLOWANCE			(8) 1-YR ALW PER 100 EQUIP CNTGCV	(9) DEPOT MAINT ALW PER 100 EQUIP	(10) ILLUSTRATION	
					(a)	(b)	(c)	(a)	(b)	(c)			(a)	(b)
					1-20	21-50	51-100	1-20	21-50	51-100			FIGURE NO.	ITEM NO.
PAHZZ	5905-192-0649	RESISTOR, FIXED, COMPOSITION R8..... RC20GF203J (81349)	EA	REF				*	*	*		3	19	R8
PAHZZ	5905-171-2004	RESISTOR, FIXED, COMPOSITION R1..... RC20GF223J (81349)	EA	2				*	*	*		3	19	R1
PAHZZ	5905-171-2004	RESISTOR, FIXED, COMPOSITION R6..... RC20GF223J (81349)	EA	REF				*	*	*		3	19	R6
PAHZZ	5905-111-4753	RESISTOR, FIXED, COMPOSITION R19..... RC20GF283J (81349)	EA	2				*	*	*		3	19	R19
PAHZZ	5905-111-4753	RESISTOR, FIXED, COMPOSITION R24..... RC20GF283J (81349)	EA	REF				*	*	*		3	19	R24
PAHZZ	5905-114-5430	RESISTOR, FIXED, COMPOSITION R14 43,000. OHM PORM5PCT 1/2W	EA	1				*	*	*		3	19	R14
PAHZZ	5905-106-9348	RESISTOR, FIXED, COMPOSITION R5 150,000. UUF PORM5PCT 1/2W	EA	2				*	*	*		3	19	R5
PAHZZ	5905-106-9348	RESISTOR, FIXED COMPOSITION R10 150,000 UUF PORM5PCT 1/2W	EA	REF				*	*	*		3	19	R10
PAHZZ	5905-751-2992	RESISTOR, THERMAL RT1 150 OHM PORM5PCT. 1/8W	EA	2				*	*	*		3	19	RT1
PAHZZ	5905-751-2992	RESISTOR, THERMAL RT2 150 OHM PORM5PCT. 1/8W	EA	REF				*	*	*		3	19	RT2
PAHZZ	5961-853-6094	TRANSISTOR Q1..... ST114 (96238)	EA	4				*	*	*		2	19	Q1
PAHZZ	5961-853-6094	TRANSISTOR Q3..... ST114 (96238)	EA	REF				*	*	*		2	19	Q3
PAHZZ	5961-853-6094	TRANSISTOR Q4..... ST114 (96238)	EA	REF				*	*	*		2	19	Q4
PAHZZ	5961-853-6094	TRANSISTOR Q5..... ST114 (96238)	EA	REF				*	*	*		2	19	Q5
PAHZZ	5961-226-4636	TRANSISTOR Q2 GERMANIUM 0.395 IN X..... 0.570 IN	EA	1				*	*	*		2	19	Q2
PAHZZ	5910-666-6762	CAPACITOR, FIXED, MICA DIELECTRIC C6..... 1200 UUF PORM5PCT 500 VDCW 0.438 IN H X 0.781 IN W X 0.219 IN D	EA	1				*	*	*		3	23	C6
XDHZZ		CM20E122J (02799) CAPACITOR, FIXED, MICA DIELECTRIC C5..... 2700 UUF PORM5PCT 500 VDCW	EA	1				*	*	*			23	C5
XDHZZ		CM20D272J (81349) CAPACITOR, FIXED, MICA DIELECTRIC C8..... 6200 UUF PORM5PCT 500 VDCW	EA	1				*	*	*			23	C8
XDHZZ		CR35F622JP3 (81349) CAPACITOR, FIXED, MICA DIELECTRIC C9..... CH35F103JP3 (81349)	EA	1				*	*	*			23	C9
XDHZZ		WFM1S33 (14655) CAPACITOR, FIXED, PLASTIC DIELECTRIC C11..... WMF1PIE (14655)	EA	1				*	*	*			23	C11
PAHZZ	5910-682-3030	WFM1S33 (14655) CAPACITOR, FIXED, PLASTIC DIELECTRIC C2..... WMF1PIE (14655)	EA	3				*	*	*		3	23	C2

SECTION V

TM 11-5805-347-24P

(1)	(2)	(3)	(4)	(5)	(6)			(7)			(8)	(9)	(10)			
					30-DAY DS MAINT ALLOWANCE			30-DAY GS MAINT ALLOWANCE					1-YR ALW PER 100 EQUIP CNTGCV	DEPOT MAINT ALW PER 100 EQUIP	(a) FIGURE NO.	(b) ITEM NO.
					(a)	(b)	(c)	(a)	(b)	(c)						
SMR CODE	FEDERAL STOCK NUMBER	DESCRIPTION REFERENCE NUMBER & MFR. CODE USABLE ON CODE	UNIT OF MEAS	QTY INC IN UNIT	1-20	21-50	51-100	1-20	21-50	51-100						
PAHZZ	5910-682-3030	CAPACITOR, FIXED, PLASTIC DIELECTRIC C3.. WMF1P1E (14655)	EA	REF				*	*	*		3	23	C3		
PAHZZ	5916-682-3030	CAPACITOR, FIXED, PLASTIC DIELECTRIC C4.. WMF1P1E (14655)	EA	REF				*	*	*		3	23	C4		
PAHZZ	5910-834-4900	CAPACITOR, FIXED, ELECTROLYTIC CI..... TE1155 (56289)	EA	1				*	*	*		3	23	C1		
PAHZZ	5910-951-7074	CAPACITOR, FIXED, MICA DIELECTRIC C7..... CM15F101JP3 (81349)	EA	1				*	*	*		3	23	C7		
XDHZZ		CAPACITOR, FIXED, MICA DIELECTRIC C7..... CM15C111J (81349)	EA	1				*	*	*			23	C7		
XDHZZ		CAPACITOR, FIXED, MICA DIELECTRIC C7..... CM15C121JP3 (81349)	EA	1				*	*	*			23	C7		
PAHZZ	5910-984-8370	CAPACITOR, FIXED, MICA DIELECTRIC C7..... CM15F131JP3 (81349)	EA	1				*	*	*		3	23	C7		
PAHZZ	5910-063-8410	CAPACITOR, FIXED, MICA DIELECTRIC C7..... CM15F151JP3 (81349)	EA	1				*	*	*		3	23	C7		
PAHZZ	5910-984-8369	CAPACITOR, FIXED, MICA DIELECTRIC C7..... CM15F161JP3 (81349)	EA	1				*	*	*		3	23	C7		
XDHZZ		CAPACITOR, FIXED, MICA DIELECTRIC C7..... CM15F181JP3 (81349)	EA	1				*	*	*			23	C7		
PAHZZ	5910-023-9871	CAPACITOR, FIXED, MICA DIELECTRIC C7 200 UUF PORMSPCT 300 VDCW CM15F201JP3 (81349)	EA	1				*	*	*		3	23	C7		
XDHZZ		CAPACITOR, FIXED, MICA DIELECTRIC C7 220 UUF PORMSPCT 300 VDCW CM15D221J (81349)	EA	1				*	*	*			23	C7		
XDHZZ		CAPACITOR, FIXED, MICA DIELECTRIC C7 240 UUF PORMSPCT 300 VDCW CM15D241J (81349)	EA	1				*	*	*			23	C7		
PAHZZ	5910-984-4146	CAPACITOR, FIXED, MICA DIELECTRIC C7 270 UUF PORMSPCT 300 VDCW CM15F271JP3 (81349)	EA	1				*	*	*		3	23	C7		
PAHZZ	5910-951-7063	CAPACITOR, FIXED, MICA DIELECTRIC C7 300 UUF PORWSPCT 300 VDCW CM15F301JP3 (81349)	EA	1				*	*	*		3	23	C7		
XDHZZ		CAPACITOR, FIXED, MICA DIELECTRIC C10.... 100 UUF PORMSPCT 500 VDCW CM15D101J (81349)	EA	1				*	*	*			23	C10		
PAHZZ	5910-984-8375	CAPACITOR, FIXED, MICA DIELECTRIC C10.... 110 UUF PORMSPCT 500 VDCW CW15F111JP3 (81349)	EA	1				*	*	*		3	23	C10		
PAHZZ	5910-984-7786	CAPACITOR, FIXED, MICA DIELECTRIC C10.... 120 UUF PORMSPCT 500 VDCW CM15F121J (81349)	EA	1				*	*	*		3	23	C10		
PAHZZ	5910-984-8370	CAPACITOR, FIXED, MICA DIELECTRIC C10.... 130 UUF PORMSPCT 500 VDCW CM15F131J (81349)	EA	1				*	*	*		3	23	C10		
XDHZZ		CAPACITOR, FIXED, MICA DIELECTRIC C10.... 150 UUF PORMSPCT 500 VDCW CM20D151J (81349)	EA	1				*	*	*			23	C10		
PAHZZ	5910-984-8369	CAPACITOR, FIXED, MICA DIELECTRIC C10.... 160 UUF PORMSPCT 500 VDCW CM15F161J (81349)	EA	1				*	*	*		3	23	C10		

SECTION V

TM 11-5805-347-24P

(1) SMR CODE	(2) FEDERAL STOCK NUMBER	(3) DESCRIPTION REFERENCE NUMBER & MFR. CODE USABLE ON CODE		(4) UNIT OF MEAS	(5) QTY INC IN UNIT	(6) 30-DAY DS MAINT ALLOWANCE			(7) 30-DAY GS MAINT ALLOWANCE			(8) 1-YR ALW PER 100 EQUIP CNTGCT	(9) DEPOT MAINT ALW PER 100 EQUIP	(10) ILLUSTRATION	
						(a)	(b)	(c)	(a)	(b)	(c)			(a)	(b)
						1-20	21-50	51-100	1-20	21-50	51-100			FIGURE NO.	ITEM NO.
PAHZZ	5910-772-1820	CAPACITOR, FIXED, MICA DIELECTRIC C10.... 180 UUF PORM5PCT 500 VDCW CM20D181J (81349)		EA	1				*	*	*		3	23	C10
XDHZZ		CAPACITOR, FIXED, MICA DIELECTRIC C10.... 200 UUF PORM5PCT 500 VDCW CM20D201J (81349)		EA	1				*	*	*			23	C10
XDHZZ		CAPACITOR, FIXED, MICA DIELECTRIC C10.... 220 UUF PORM5PCT 500 VDCW CM20D221J (81349)		EA	1				*	*	*			23	C10
PAHZZ	5910-101-4714	CAPACITOR, FIXED, MICA DIELECTRIC C10.... 240 UUF PORM5PCT 500 VDCW CM20D241J (81349)		EA	1				*	*	*		3	23	C10
PAHZZ	5910-899-2538	CAPACITOR, FIXED, MICA DIELECTRIC C10.... 270 UUF PORM5PCT 500 VDCW CM20D271J (81349)		EA	1				*	*	*		3	23	C10
PAHZZ	5910-728-2810	CAPACITOR, FIXED, MICA DIELECTRIC C10.... 300 UUF PORM5PCT 500 VDCW CM20D301J (81349)		EA	1				*	*	*		3	23	C10
PAHZZ	5910-160-1158	CAPACITOR, FIXED, MICA DIELECTRIC C10.... 330 UUF PORM5PCT 500 VDCW CM20D331J (81349)		EA	1				*	*	*		3	23	C10
XDHZZ		CAPACITOR, FIXED, MICA DIELECTRIC C10.... 360 UUF PORM5PCT 500 VDCW CM20D361J (81349)		EA	1				*	*	*			23	C10
XDHZZ		CAPACITOR, FIXED, MICA DIELECTRIC C10.... 390 UUF PORM5PCT 500 VDCW CM20D391J (81349)		EA	1				*	*	*			23	C10
XDHZZ		CAPACITOR, FIXED, MICA DIELECTRIC C10.... 430 UUF PORM5PCT 500 VDCW CM20D431J (81349)		EA	1				*	*	*			23	C10
PAHZZ	5910-950-6416	CAPACITOR, FIXED, MICA DIELECTRIC C10.... 470 UUF PORM5PCT 300 VDCW CM15F471JP3 (81349)		EA	1				*	*	*		3	23	C10
PAHZZ	5910-951-7591	CAPACITOR, FIXED, MICA DIELECTRIC C10.... 510 UUF PORM5PCT 500 VDCW CM15F511JP3 (81349)		EA	1				*	*	*		3	23	C10
PAHZZ	5910-988-0777	CAPACITOR, FIXED, MICA DIELECTRIC C10.... 560 UUF PORM5PCT 500 VDCW CM20F561JP3 (81349)		EA	1				*	*	*		3	23	C10
PAHZZ	5910-727-2550	CAPACITOR, FIXED, MICA DIELECTRIC C10.... 620 UUF PORM5PCT 500 VDCW CM30D621J (81349)		EA	1				*	*	*		3	23	C10
XDHZZ		CAPACITOR, FIXED, MICA DIELECTRIC C10.... 620 UUF PORM5PCT 500 VDCW CM30D621J (81349)		EA	1				*	*	*			23	C10
XDHZZ		CAPACITOR, FIXED, MICA DIELECTRIC C10.... 750 OHM PORM5PCT 500 VDCW CM30D751J (81349)		EA	1				*	*	*			23	C10
PAHZZ	5910-990-5177	CAPACITOR, FIXED, MICA DIELECTRIC C10.... 820 UUF PORM5PCT 500 VDCW CM30D821J (81349)		EA	1				*	*	*		3	23	C10
XDHZZ		CAPACITOR, FIXED, MICA DIELECTRIC C10.... 910 UUF PORM5PCT 500 VDCW CM30D911J (81349)		EA	1				*	*	*			23	C10

SECTION V
(1) (2)

(3)
DESCRIPTION
REFERENCE NUMBER & MFR. CODE USABLE ON CODE

(4) JNIT OF 4EAS	(5) QTY INC IN UNIT	(6) 30-DAY DS MAINT ALLOWANCE			(7) 30-DAY GS MAINT ALLOWANCE			(8) 1-YR ALW PER 100 EQUIP CNTGCT	(9) DEPOT MAINT ALW PER 100 EQUIP	(10) ILLUSTRATION	
		(a)	(b)	(c)	(a)	(b)	(c)			(a)	(b)
		1-20	21-50	51-100	1-20	21-50	51-100			FIGURE NO.	ITEM NO.
XDHZZ	1				*	*	*			23	C10
XDHZZ	1				*	*	*			23	C10
XDHZZ	1				*	*	*			23	C10
XDHZZ	1				*	*	*			23	C10
XDHZZ	1				*	*	*			23	C10
PAHZZ	1				*	*	*		3	23	C10
XDHZZ	1				*	*	*			23	C10
XDHZZ	1				*	*	*			23	C10
XDHZZ	1				*	*	*			23	L1
XDHZZ	1				*	*	*			23	R1
PAHZZ	1				*	*	*		3	23	R11
PAHZZ	1				*	*	*		3	23	R14
PAHZZ	1				*	*	*		3	23	R22
PAHZZ	1				*	*	*		3	23	R16
PAHZZ	1				*	*	*		3	23	R6
PAHZZ	1				*	*	*		3	23	R2
PAHZZ	1				*	*	*		3	23	R12
PAHZZ	3				*	*	*		3	23	R18
PAHZZ	REF				*	*	*		3	23	R21
PAHZZ	REF				*	*	*		3	23	R24
PAHZZ	1				*	*	*		3	23	R13

SECTION V

TM11-5805-347-34P

(1) SMR CODE	(2) FEDERAL STOCK NUMBER	(3) DESCRIPTION REFERENCE NUMBER & MFR. CODE USABLE ON CODE	(4) UNIT OF MEAS	(5) QTY INC IN UNIT	(6) 30-DAY DS MAINT ALLOWANCE			(7) 30-DAY GS MAINT ALLOWANCE			(8) 1-YR ALW PER 100 EQUIP CNTGCT	(9) DEPOT MAINT ALW PER 100 EQUIP	(10) ILLUSTRATION	
					(a)	(b)	(c)	(a)	(b)	(c)			(a)	(b)
					1-20	21-50	51-100	1-20	21-50	51-100			FIGURE NO	ITEM NO.
PAHZZ	5905-141-1165	RESISTOR, FIXED, COMPOSITION R3..... RC20GF682J (81349)	EA	1				*	*	*		3	23	R3
PAHZZ	5905-185-8510	RESISTOR, FIXED, COMPOSITION R8..... RC20GF103J (81349)	EA	4				*	*	*		3	23	R8
PAHZZ	5905-185-8510	RESISTOR, FIXED, COMPOSITION R10..... RC20GF103J (81349)	EA	REF				*	*	*		3	23	R10
PAHZZ	5905-185-8510	RESISTOR, FIXED, COMPOSITION R17..... RC20GF103J (81349)	EA	REF				*	*	*		3	23	R17
PAHZZ	5905-185-8510	RESISTOR, FIXED, COMPOSITION R20..... RC20GF103J (81349)	EA	REF				*	*	*		3	23	R20
PAHZZ	5905-192-0649	RESISTOR, FIXED, COMPOSITION R23..... RC20GF203J (81349)	EA	1				*	*	*		3	23	R23
PAHZZ	5905-171-2004	RESISTOR, FIXED, COMPOSITION R9..... RC20GF223J (81349)	EA	1				*	*	*		3	23	R9
PAHZZ	5905-279-3499	RESISTOR, FIXED, COMPOSITION R19..... RC20GF273 (81349)	EA	1				*	*	*		3	23	R19
PAHZZ	5905-279-3496	RESISTOR, FIXED, COMPOSITION R4 51,000.. OHM PORM5PCT 1/2W RC20GF513J (81349)	EA	2				*	*	*		3	23	R4
PAHZZ	5905-279-3496	RESISTOR, FIXED, COMPOSITION R5 51,000.. OHM PORM5PCT 1/2W RC20GF513J (81349)	EA	REF				*	*	*		3	23	R5
PAHZZ	5905-826-2291	RESISTOR, VARIABLE R15..... 275-1-102 (80294)	EA	1				*	*	*		3	23	R15
PAHZZ	5905-883-6313	RESISTOR, VARIABLE R1..... 275-1-103 (80294)	EA	1				*	*	*		3	23	R7
PAHZZ	5961-556-2091	SEMICONDUCTOR DEVICE, DIODE CR1..... 1N270 (81349)	EA	2				*	*	*		3	23	CR1
PAHZZ	5961-556-2091	SEMICONDUCTOR DEVICE, DIODE CR2..... 1N270 (81349)	EA	REF				*	*	*		3	23	CR2
PAHZZ	5950-855-9413	TRANSFORMER, AUDIO FREQUENCY T1..... MMT11M (00348)	EA	1				*	*	*		3	23	T1
PAHZZ	5981-853-6094	TRANSISTOR Q1..... ST114 (96238)	EA	5				*	*	*		2	23	Q1
PAHZZ	5961-853-6094	TRANSISTOR Q2..... ST114 (96238)	EA	REF				*	*	*		2	23	Q2
PAHZZ	5961-843-6094	TRANSISTOR Q3..... ST114 (96238)	EA	REF				*	*	*		2	23	Q3
PAHZZ	5961-853-6094	TRANSISTOR Q4..... ST114 (96238)	EA	REF				*	*	*		2	23	Q4
PAHZZ	5961-853-6094	TRANSISTOR Q5..... ST114 (96238)	EA	REF				*	*	*		2	23	Q5
PAHZZ	5910-682-3030	CAPACITOR, FIXED, PLASTIC DIELECTRIC C5.. WMF1P1E (14655)	EA	1				*	*	*		3	21	C5
XIHZZ		CAPACITOR, FIXED, PLASTIC DIELECTRIC C1.. 470,000 UUF PORM10PCT VDCW 1.250 IN LG X 0.437 IN DIA WMF1P47 (14655)	EA	4				*	*	*			21	C1
XIHZZ		CAPACITOR, FIXED, PLASTIC DIELECTRIC C3.. 470,000 UUF PORM10PCT VDCW 1.250 IN LG X 0.437 IN DIA WMF1P47 (14655)	EA	REF				*	*	*			21	C3

SECTION V

TM11-5805-347-24P

(1) SMR CODE	(2) FEDERAL STOCK NUMBER	(3) DESCRIPTION REFERENCE NUMBER & MFR. CODE USABLE ON CODE	(4) UNIT OF MEAS	(5) QTY INC IN UNIT	(6) 30-DAY DS MAINT ALLOWANCE			(7) 30-DAY GS MAINT ALLOWANCE			(8) 1-YR ALW PER 100 EQUIP CNTGCT	(9) DEPOT MAINT ALW PER 100 EQUIP	(10) ILLUSTRATION	
					(a)	(b)	(c)	(a)	(b)	(c)			(a)	(b)
					1-20	21-50	51-100	1-20	21-50	51-100			FIGURE NO.	ITEM NO.
XDHZZ		CAPACITOR, FIXED, PLASTIC DIELECTRIC C6. 470,000 UUF PORM10PCT VDCW 1.250 IN LG X 0.437 IN DIA WMF1P47 (14655)	EA	REF				*	*	*			21	C6
XDHZZ		CAPACITOR, FIXED, PLASTIC DIELECTRIC C7. 470,000 UUF PORM10PCT VDCW 1.250 IN LG X 0.437 IN DIA WMF1P47 (14655)	EA	REF				*	*	*			21	C7
PAHZZ	5910-834-4900	CAPACITOR, FIXED, ELECTROLYTIC C4.... TE1155 (56289)	EA	1				*	*	*	3		21	C4
PAHZZ	5910-542-7362	CAPACITOR, FIXED, ELECTROLYTIC C2 20 UF 15 VDCW 0.750 IN LG X 0.312 IN DIA TE1157 (56289)	EA	1				*	*	*	3		21	C2
PAHZZ	5910-827-1209	CAPACITOR, FIXED, ELECTROLYTIC C8..... TE1211 (56289)	EA	1				*	*	*	3		21	C8
XDHZZ		RESISTOR, FIXED, COMPOSITION R8..... RC20GF101J (81349)	EA	1				*	*	*	3		21	R8
PAHZZ	5905-141-0723	RESISTOR, FIXED, COMPOSITION R1..... RC20GF621J (81349)	EA	2				*	*	*	3		21	R1
PAHZZ	5905-141-0723	RESISTOR, FIXED, COMPOSITION R14..... RC20GF621J (81349)	EA	REF				*	*	*	3		21	R14
PAHZZ	5905-116-8569	RESISTOR, FIXED, COMPOSITION R13 820 OHM PORM5PCT 1/2W RC20GF821J (81349)	EA	1				*	*	*	3		21	R13
PAHZZ	5905-190-8880	RESISTOR, FIXED, COMPOSITION R7..... RC206F122J (81349)	EA	2				*	*	*	3		21	R7
PAHZZ	5905-190-8880	RESISTOR, FIXED, COMPOSITION R11..... RC20GF122J (81349)	EA	REF				*	*	*	3		21	R11
PAHZZ	5905-185-8510	RESISTOR, FIXED, COMPOSITION R2..... RC20GF103J (81349)	EA	2				*	*	*	3		21	R2
PAHZZ	5905-185-8510	RESISTOR, FIXED, COMPOSITION R3..... RC20GF103J (81349)	EA	REF				*	*	*	3		21	R3
PAHZZ	5905-279-3499	RESISTOR, FIXED, COMPOSITION R5..... RC20GF273J (81349)	EA	2				*	*	*	3		21	R5
PAHZZ	5905-279-3499	RESISTOR, FIXED, COMPOSITION R10..... RC20GF273J (81349)	EA	REF				*	*	*	3		21	R10
PAHZZ	5905-171-1998	RESISTOR, FIXED, COMPOSITION R12..... RC20GF333J (81349)	EA	1				*	*	*	3		21	R12
PAHZZ	5905-116-8565	RESISTOR, FIXED, COMPOSITION R6 62,000.. OHM PORM5PCT 1/2 W RC20GF623J (81349)	EA	1				*	*	*	3		21	R6
PAHZZ	5905-279-3495	RESISTOR, FIXED, COMPOSITION R9 75,000.. OHM PORM5PCT 1/2W RC20GF753J (81349)	EA	1				*	*	*	3		21	R9
PAHZZ	5905-826-2291	RESISTOR, VARIABLE RI..... 275-1-102 (80294)	EA	1				*	*	*	3		21	R4
PAHZZ	5961-226-7535	SEMICONDUCTOR DEVICE, DIODE CR1..... T1600C (96214)	EA	4				*	*	*	3		21	CR1
PAHZZ	5961-226-7535	SEMICONDUCTOR DEVICE, DIODE CR2..... T160DC (96214)	EA	REF				*	*	*	3		21	CR2
PAHZZ	5961-226-7535	SEMICONDUCTOR DEVICE, DIODE CR3..... T600C (96214)	EA	REF				*	*	*	3		21	CR3

SECTION V

TM 11-5805-347-24P

(1) SMR CODE	(2) FEDERAL STOCK NUMBER	(3) DESCRIPTION REFERENCE NUMBER & MFR. CODE USABLE ON CODE		(4) UNIT OF MEAS	(5) QTY INC IN UNIT	(6) 30-DAY DS MAINT ALLOWANCE			(7) 30-DAY GS MAINT ALLOWANCE			(8) 1-YR ALW PER 100 EQUIP CNTGCT	(9) DEPOT MAINT ALW PER 100 EQUIP	(10) ILLUSTRATION	
						(a)	(b)	(c)	(a)	(b)	(c)			(a)	(b)
						1-20	21-50	51-100	1-20	21-50	51-100			FIGURE NO.	ITEM NO.
PAHZZ	5961-226-7535	SEMICONDUCTOR, DEVICE, DIODE C R 4 T1600C (96214)	EA	REF				*	*	*		3	21	CR4	
PAHZZ	5961-556-2091	SEMICONDUCTOR, DEVICE, DIODE CR5.. 1N270 (81349)	EA	2				*	*	*		3	21	CR5	
PAHZZ	5961-556-2091	SEMICONDUCTOR, DEVICE, DIODE CR6.. 1N270 (81349)	EA	REF				*	*	*		3	21	CR6	
PAHZZ	5950-064-0680	TRANSFORMER, AUDIO FREQUENCY T1 2,500... OHM, 2,500 OHM SECD IMPEDANCE FULLY INCLOSED CASE 0.875 LG X 0.875 IN W X 0.531 IN H MMT19M (00348)	EA	3				*	*	*		3	21	T1	
PAHZZ	5950-064-0680	TRANSFORMER, AUDIO FREQUENCY T2 2,500... OHM PRI, 2,500 OHM SECD IMPEDANCE FULLY INCLOSED CASE 0.875 LG X 0.875 IN W X 0.531 IN H MMT19M (00348)	EA	REF				*	*	*		3	21	T2	
PAHZZ	5950-064-0680	TRANSFORMER, AUDIO FREQUENCY T4 2,500... OHM PRI, 2,500 OHM SECD IMPEDANCE FULLY INCLOSED CASE 0.875 IN LG X 0.875 IN W X 0.531 IN H MMT19M (00348)	EA	REF				*	*	*		3	21	T4	
PAHZZ	5950-855-9413	TRANSFORMER, AUDIO FREQUENCY T3... MMT11M (00348)	EA	1				*	*	*		3	21	T3	
PAHZZ	5961-853-6094	TRANSISTOR Q1... ST114 (96238)	EA	2				*	*	*		2	21	Q1	
PAHZZ		TRANSISTOR Q2... ST114 (96238)	EA	REF				*	*	*		2	21	Q2	
PAHZZ		TRANSISTOR Q3... ST124 (96238)	EA	1				*	*	*		2	21	Q3	
PAHZZ	5910-834-9721	CAPACITOR, FIXED, PLASTIC DIELECTRIC C4.. WMF1P22E (14655)	EA	2				*	*	*		3	15	C4	
PAHZZ	5910-834-9721	CAPACITOR, FIXED, PLASTIC DIELECTRIC C6.. WMF1P22E (14655)	EA	REF				*	*	*		3	15	C6	
PAHZZ	5910-834-4900	CAPACITOR, FIXED, ELECTROLYTIC C11... TE1155 (56289)	EA	11				*	*	*		3	15	C1	
PAHZZ	5910-834-4900	CAPACITOR, FIXED, ELECTROLYTIC C2... T E 1 1 5 5 (5 6 2 8 9)	EA	REF				*	*	*		3	15	C2	
PAHZZ	5910-834-4900	CAPACITOR, FIXED, ELECTROLYTIC C3... TE1155 (56289)	EA	REF				*	*	*		3	15	C3	
PAHZZ	5910-834-4900	CAPACITOR, FIXED, ELECTROLYTIC C5... TE1155 (56289)	EA	REF				*	*	*		3	15	C5	
PAHZZ	5910-834-4900	CAPACITOR, FIXED, ELECTROLYTIC C7... TE1155 (56289)	EA	REF				*	*	*		3	15	C7	
PAHZZ	5910-834-4900	CAPACITOR, FIXED, ELECTROLYTIC C9... TE1155 (56269)	EA	REF				*	*	*		3	15	C9	
PAHZZ	5910-834-4900	CAPACITOR, FIXED, ELECTROLYTIC C11... TE1155 (56289)	EA	REF				*	*	*		3	15	C11	
PAHZZ	5910-834-4900	CAPACITOR, FIXED, ELECTROLYTIC C12... TE1155 (56289)	EA	REF				*	*	*		3	15	C12	
PAHZZ	5910-834-4900	CAPACITOR, FIXED, ELECTROLYTIC C14... TE1155 (56289)	EA	REF				*	*	*		3	15	C14	
PAHZZ	5910-834-8900	CAPACITOR, FIXED, ELECTROLYTIC C15... TE1155 (56289)	EA	REF				*	*	*		3	15	C15	

(1) SMR CODE	(2) FEDERAL STOCK NUMBER	(3) DESCRIPTION REFERENCE NUMBER & MFR. CODE USABLE ON CO		(4) UNIT OF MEAS	(5) QTY INC IN UNIT	(6) 30-DAY DS MAINT ALLOWANCE			(7) 30-DAY GS MAINT ALLOWANCE			(8) 1-YR ALW PER 100 EQUIP CNTGCT	(9) DEPOT MAINT ALW PER 100 EQUIP	(10) ILLUSTRATION	
						(a)	(b)	(c)	(a)	(b)	(c)			(a)	(b)
						1-20	21-50	51-100	1-20	21-50	51-100			FIGURE NO.	ITEM NO.
PAHZZ	5910-834-4900	CAPACITOR, FIXED, ELECTROLYTIC C16...	TE1155 (56289)	EA	REF				*	*	*		3	15	C16
PAHZZ	5910-837-4582	CAPACITOR, FIXED, ELECTROLYTIC C10...	TE1206 (56289)	EA	1				*	*	*		3	15	C10
PAHZZ	5910-691-1249	CAPACITOR, FIXED, ELECTROLYTIC C8...	TE1155 (56289)	EA	2				*	*	*		3	15	C8
PAHZZ	5910-691-1249	CAPACITOR, FIXED, ELECTROLYTIC C13...	TE1155 (56289)	EA	REF				*	*	*		3	15	C13
PAHZZ	5905-111-4734	RESISTOR, FIXED, COMPOSITION R24...	RC20GF470J (81349)	EA	1				*	*	*		3	15	R24
PAHZZ	5905-192-3971	RESISTOR, FIXED, COMPOSITION R18...	RC20GF331J (81349)	EA	1				*	*	*		3	15	R18
PAHZZ	5905-279-3511	RESISTOR, FIXED, COMPOSITION R30...	RC20GF511J (81349)	EA	1				*	*	*		3	15	R30
PAHZZ	5905-141-0598	RESISTOR, FIXED, COMPOSITION R22...	RC20GF561J (81349)	EA	2				*	*	*		3	15	R22
PAHZZ	5905-141-0598	RESISTOR, FIXED, COMPOSITION R33...	RC20GF561J (81349)	EA	REF				*	*	*		3	15	R33
PAHZZ	5905-195-6791	RESISTOR, FIXED, COMPOSITION R25...	RC20GF681J (81349)	EA	2				*	*	*		3	15	R25
PAHZZ	5905-195-6791	RESISTOR, FIXED, COMPOSITION R35...	RC20GF681J (81349)	EA	REF				*	*	*		3	15	R35
PAHZZ	5905-195-6806	RESISTOR, FIXED, COMPOSITION R31...	RC20GF102J (81349)	EA	1				*	*	*		3	15	R31
PAHZZ	5905-190-8880	RESISTOR, FIXED, COMPOSITION R2...	RC20GF122J (81349)	EA	9				*	*	*		3	15	R2
PAHZZ	5905-190-8880	RESISTOR, FIXED, COMPOSITION R9...	RC20GF122J (81349)	EA	REF				*	*	*		3	15	R9
PAHZZ	5905-190-8880	RESISTOR, FIXED, COMPOSITION R10...	RC20GF122J (81349)	EA	REF				*	*	*		3	15	R10
PAHZZ	5905-190-8880	RESISTOR, FIXED, COMPOSITION R11...	RC20GF122J (81349)	EA	REF				*	*	*		3	15	R11
PAHZZ	5905-190-8880	RESISTOR, FIXED, COMPOSITION R12...	RC20GF122J (81349)	EA	REF				*	*	*		3	15	R12
PAHZZ	5905-190-8880	RESISTOR, FIXED, COMPOSITION R16...	RC20GF122J (81349)	EA	REF				*	*	*		3	15	R16
PAHZZ	5905-190-8880	RESISTOR, FIXED, COMPOSITION R17...	RC20GF122J (81349)	EA	REF				*	*	*		3	15	R17
PAHZZ	5905-190-8880	RESISTOR, FIXED, COMPOSITION R19...	RC20GF122J (81349)	EA	REF				*	*	*		3	15	R19
PAHZZ	5905-190-8880	RESISTOR, FIXED, COMPOSITION R20...	RS20GF122J (81349)	EA	REF				*	*	*		3	15	R20
PAHZZ	5905-279-1877	RESISTOR, FIXED, COMPOSITION R23...	RC20GF242J (81349)	EA	2				*	*	*		3	15	R23
PAHZZ	5905-279-1877	RESISTOR, FIXED, COMPOSITION R34...	RC20GF242J (81349)	EA	REF				*	*	*		3	15	R34
PAHZZ	5905-141-1130	RESISTOR, FIXED, COMPOSITION R6...	RC20GF272J (81349)	EA	3				*	*	*		3	15	R6
PAHZZ	5905-141-1130	RESISTOR, FIXED, COMPOSITION R14...	RC20GF272J (81349)	EA	REF				*	*	*		3	15	R14
PAHZZ	5905-141-1130	RESISTOR, FIXED, COMPOSITION R28...	RC20GF272J (81349)	EA	REF				*	*	*		3	15	R28

SECTION V		(2)	(3)	(4)	(5)	(6)			(7)			(8)	(9)	(10)	
(1) SMR CODE	FEDERAL STOCK NUMBER	REFERENCE NUMBER & MFR. CODE	DESCRIPTION USABLE ON CODE	UNIT OF MEAS	QTY INC IN UNIT	30-DAY DS MAINT ALLOWANCE			30-DAY GS MAINT ALLOWANCE			1-YR ALW PER 100 EQUIP CNTGCT	DEPOT MAINT ALW PER 100 EQUIP	ILLUSTRATION	
						(a) 1-20	(b) 21-50	(c) 51-100	(a) 1-20	(b) 21-50	(c) 51-100			(a) FIGURE NO.	(b) ITEM NO.
PAHZZ	5905-279-3504		RESISTOR, FIXED, COMPOSITION R5	EA	1				*	*	*		3	15	R5
PAHZZ	5905-111-4744		RC20GF472J (81349) RESISTOR, FIXED, COMPOSITION R40 R C 2 0 G F 5 1 2 J	EA	1				*	*	*		3		R40
PAHZZ	5905-195-6453		RESISTOR, FIXED, COMPOSITION R38	EA	1				*	*	*		3	15	R38
PAHZZ	59D5-279-3499		RC20GF562J (81349) RESISTOR, FIXED, COMPOSITION R3	EA	5				*	*	*		3	15	R3
PAHZZ	9905-279-3499		RC20GF273J (81349) RESISTOR, FIXED, COMPOSITION R8	EA	REF				*	*	*		3	15	R8
PAHZZ	5903-279-3499		RC20GF273J (81349) RESISTOR, FIXED, COMPOSITION R15	EA	REF				*	*	*		3	15	R15
PAHZZ	5905-279-3499		RC20GF273J (81349) RESISTOR, FIXED, COMPOSITION R27	EA	REF				*	*	*		3	15	R27
PAHZZ	5905-279-3499		RC20GF273J (81349) RESISTOR, FIXED, COMPOSITION R37	EA	REF				*	*	*		3	15	R37
PAHZZ	5905-114-5489		RC20GF273J (81349) RESISTOR, FIXED, COMPOSITION R1	EA	5				*	*	*		3	15	R1
PAHZZ	5905-114-5489		RC20GF823J (81349) RESISTOR, FIXED, COMPOSITION R7	EA	REF				*	*	*		3	15	R7
PAHZZ	5905-114-5489		RC20GF823J (81349) RESISTOR, FIXED, COMPOSITION R13	EA	REF				*	*	*		3	15	R13
PAHZZ	5905-114-5489		RC20GF823J (81349) RESISTOR, FIXED, COMPOSITION R26	EA	REF				*	*	*		3	15	R26
PAHZZ	5905114-5489		RC20GF823J (81349) RESISTOR, FIXED, COMPOSITION R36	EA	REF				*	*	*		3	15	R36
PAHZZ	5905-192-0390		RC20GF823J (81349) RESISTOR, FIXED, COMPOSITION R32	EA	1				*	*	*		3	15	R32
XDHZZ			RC20GF105J (81349) RESISTOR, FIXED, COMPOSITION R21	EA	1				*	*	*		3	15	R21
PAHZZ	5905-883-6313		RC20GF305J (81349) RESISTOR, VARIABLE R4	EA	1				*	*	*		3	15	R4
PAHZZ	5961-892-0734		273-1-103 (80294) SEMICONDUCTOR DEVICE, DIODE CR9	EA	4				*	*	*		3	15	CR9
PAHZZ	5691-892-0734		1N462 (81867) SEMICONDUCTOR DEVICE, DIODE CR10	EA	REF				*	*	*		3	15	CR10
PAHZZ	5961-892-0734		1N462 (81867) SEMICONDUCTOR DEVICE DIODE CR11	EA	REF				*	*	*		3	15	CR11
PAHZZ	5961-892-0734		1N462 (81867) SEMICONDUCTOR DEVICE, DIODE CR12	EA	REF				*	*	*		3		CR12
PAHZZ	5961-226-7535		1N462 (81867) SEMICONDUCTOR DEVICE, DIODE CR1	EA	8				*	*	*		3	15	CR1
PAHZZ	5691-226-7535		T1600C (96214) SEMICONDUCTOR DEVICE, DIODE CR2	EA	REF				*	*	*		3	15	CR2
PAHZZ	5961-226-7535		T1600C (96214) SEMICONDUCTOR DEVICE, DIODE CR3	EA	REF				*	*	*		3	15	CR3
PAHZZ	5961-226-7535		T1600C (96214) SEMICONDUCTOR DEVICE, DIODE CR4	EA	REF				*	*	*		3	15	CR4
PAHZZ	5961-226-7535		T1600C (96214) SEMICONDUCTOR DEVICE, DIODE CR5	EA	REF				*	*	*		3	15	CR5
PAHZZ	5961-226-7335		T1600C (96214) SEMICONDUCTOR DEVICE, DIODE CR6	EA	REF				*	*	*		3	15	CR6

(1) SMR CODE	(2) FEDERAL STOCK NUMBER	(3) DESCRIPTION REFERENCE NUMBER & MFR. CODE USABLE ON CODE		(4) UNIT OF MEAS	(5) QTY INC IN UNIT	(6) 30-DAY DS MAINT ALLOWANCE			(7) 30-DAY GS MAINT ALLOWANCE			(8) 1-YR ALW PER 100 EQUIP CNTGCT	(9) DEPOT MAINT ALW PER 100 EQUIP	(10) ILLUSTRATION	
						(a)	(b)	(c)	(a)	(b)	(c)			(a)	(b)
						1-20	21-50	51-100	1-20	21-50	51-100			FIGURE NO.	ITEM NO.
PAHZZ	5961-226-7535	SEMICONDUCTOR DEVICE, DIODE T1600C (96214)	CR7.....	EA	REF				*	*	*		3	15	CR7
PAHZZ	5961-226-7535	SEMICONDUCTOR DEVICE, DIODE T1600C (96214)	CR8.....	EA	REF				*	*	*		3	15	CR8
PAHZZ	5905-860-0801	TRANSFORMER, AUDIO FREQUENCY SP52 (81095)	T5.....	EA	1				*	*	*		3	15	T5
PAHZZ	5950-855-9413	TRANSFORMER, AUDIO FREQUENCY MMT11H (00348)	T1.....	EA	1				*	*	*		3	15	T1
PAHZZ	5950-860-0800	TRANSFORMER, AUDIO FREQUENCY SP66 (81095)	T2.....	EA	5				*	*	*		3	15	T2
PAHZZ	5950-860-0800	TRANSFORMER, AUDIO FREQUENCY SP66 (81095)	T3.....	EA	REF				*	*	*		3	15	T3
PAHZZ	5950-860-0800	TRANSFORMER, AUDIO FREQUENCY SP66 (81095)	T4.....	EA	REF				*	*	*		3	15	T4
PAHZZ	5950-860-0800	TRANSFORMER, AUDIO FREQUENCY SP66 (81095)	T6.....	EA	REF				*	*	*		3	15	T6
PAHZZ	5950-860-0800	TRANSFORMER, AUDIO FREQUENCY SP66 (81095)	T7.....	EA	REF				*	*	*		3	15	T7
PAHZZ	5961-853-6094	TRANSISTOR Q1 ST114 (96238)	EA	4				*	*	*		2	15	Q1
PAHZZ	5961-853-6094	TRANSISTOR Q2 ST114 (96238)	EA	REF				*	*	*		2	15	Q2
PAHZZ	5961-853-6094	TRANSISTOR Q5 ST114 (96238)	EA	REF				*	*	*		2	15	Q5
PAHZZ	5961-853-6094	TRANSISTOR Q7 ST114 (96238)	EA	REF				*	*	*		2	15	Q7
PAHZZ	5691-226-7537	TRANSISTOR Q3 ST130 (96238)	EA	1				*	*	*		2	15	Q3
PAHZZ	5961-226-7538	TRANSISTOR Q4 ST124 (96238)	EA	4				*	*	*		2	15	Q4
PAHZZ	5961-226-7538	TRANSISTOR Q6 ST124 (96238)	EA	REF				*	*	*		2	15	Q6
PAHZZ	5961-226-7538	TRANSISTOR Q8 ST124 (96238)	EA	REF				*	*	*		2	15	Q8
PAHZZ	5961-226-7538	TRANSISTOR Q9 ST124 (96238)	EA	REF				*	*	*		2	15	Q9
XDFZZ		CABLE ASSEMBLY, POWER, ELECTRICAL NO-REF- DESIG 3 18 AWG STRANDED COND PLUG AT FIRST END STRIPPED COND ENDS AT SECD END 6 FT LG O/A	EA	1	*	*	*	*	*	*				
XDCZZ		BSTD104-2 (96238) CAP, ELECTRICAL NO-REF-DESIG.....	EA	1	*	*	*	*	*	*			15	
PAFZZ	5910-966-8499	342004SA2 (75915) CAPACITOR, FIXED, PLASTIC DIELECTRIC C7.. 2 UF PORM10PCT 200 VDCW 1.875 IN LG X 0.875 IN DIA (REF SYN C14 IS PART OF TELEPHONE TERMINAL 1A3TB3)	EA	6	*	*	*	*	*	*		3		C7
PAFZZ	5910-966-8499	WMF2W2E (14655) CAPACITOR, FIXED, PLASTIC DIELECTRIC C8.. 2 UF PORM10PCT 200 VDCW 1.875 IN LG X 0.875 (REF SYM C14 IS PART OF TELEPHONE TERMAL 1A3TB3)	EA	REF	*	*	*	*	*	*		3		C8
		WMF2W2E (14655)												

(1) SMR CODE	(2) FEDERAL STOCK NUMBER	(3) DESCRIPTION REFERENCE NUMBER & MFR. CODE USABLE ON CODE	(4) UNIT OF MEAS	(5) QTY INC IN UNIT	(6) 30-DAY DS MAINT ALLOWANCE			(7) 30-DAY GS MAINT ALLOWANCE			(8) 1-YR ALW PER 100 EQUIP CNTGCT	(9) DEPOT MAINT ALW PER 100 EQUIP	(10) ILLUSTRATION	
					(a)	(b)	(c)	(a)	(b)	(c)			(a)	(b)
					1-20	21-50	51-100	1-20	21-50	51-100			FIGURE NO.	ITEM NO.
PAFZZ	5910-966-8499	CAPACITOR, FIXED, PLASTIC DIELECTRIC C9. 2 UF PORM10PCT 200 VDCW 1.875 IN LG X 0.875 IN DIA (REF SYM C14 IS PART OF TELEPHONE TERMINAL 1A3TB3) WMF2W2E (14655)	EA	REF	*	*	*	*	*	*		3		C9
PAFZZ	5910-966-8499	CAPACITOR, FIXED, PLASTIC DIELECTRIC C12. 2 UF PORW10PCT 200 VDCW 1.875 IN LG X 0.875 IN DIA (REF SYM C14 IS PART OF TELEPHONE TERMINAL 1A3TB3) WMF2W2E (14655)	EA	REF	*	*	*	*	*	*		3		C12
PAFZZ	5910-966-8499	CAPACITOR, FIXED, PLASTIC DIELECTRIC C13. 2 UF PORM10PCT 200 VDCW 1.875 IN LG X 0.875 IN DIA (REF SYM C14 IS PART OF TELEPHONE TERMINAL 1A3TB3) WMF2W2E (14655)	EA	REF	*	*	*	*	*	*		3		C13
PAFZZ	5910-966-8499	CAPACITOR, FIXED, PLASTIC DIELECTRIC C14 2 UF PORM10PCT 200 VDCW 1.875 IN LG X 0.875 IN DIA (REF SYM C14 IS PART OF TELEPHONE TERMINAL 1A3TB3) WMF2W2E (14655)	EA	REF	*	*	*	*	*	*		3		C14
PAOZZ	5910-226-2930	CAPACITOR, FIXED, ELECTROLYTIC C5 500... UF 25 VDCW 2.656 IN LG X 1.156 IN DIA 22RRTK500 (74861)	EA	2	*	*	*	*	*	*		3	15	C5
PAOZZ	5910-226-2930	CAPACITOR, FIXED, ELECTROLYTIC C6 500... UF 25 VDCW 2.656 IN LG X 1.156 IN DIA 52RRTK500 (74861)	EA	REF	*	*	*	*	*	*		3	15	C6
PAOZZ	5910-989-4710	CAPACITOR, FIXED, ELECTROLYTIC C1 500... UF 50 VDCW 2.156 IN LG X 1.531 IN DIA 05RRTK500 (74861)	EA	2	*	*	*	*	*	*		3	15	C1
PAOZZ	5910-989-4710	CAPACITOR, FIXED, ELECTROLYTIC C2 500... UF 50 VDCW 2.156 IN LG X 1.531 IN DIA 05RRTK500 (74861)	EA	REF	*	*	*	*	*	*		3	15	C2
PAFZZ	5945-587-5036	ELECTRICAL RELAY SUBASSEMBLY NO-REF-DESIG USED TO REPAIR RELAY, ARMATURE K1 AT36-1 (78277)	EA	1	*	*	*	*	*	*		3		
XDCZZ		USED CARTRIDGE F1 0.125 AMP 250V..... F02GR125A (81349)	EA	1	*	*	*	*	*	*			15	F1
XDFZZ		FUSEHOLDER XF1..... 342004 (75915)	EA	1	*	*	*	*	*	*				XF1
XDFZZ		REACTOR L1- 20 HY INDUCTANCE 400 OHM DC. RES 1.250 IN LG X 1.250 IN W X 1.250 IN H B13351 (96238)	EA	1	*	*	*	*	*	*				L1
XDOZZ		RELAY, ARMATURE K2 DPDT 120 V AC, 0.5... AMP, 28 VDC, 0.5 AMP POLARIZED 2.218 AN LG X 1 IN W X 1 IN D 22KNCC2500GGSP (78277)	EA	2	*	*	*	*	*	*			15	K2
XDOZZ		RELAY, ARMATURE K4 DPDT 120 V AC, 0.5... AMP, 28 VDC, 0.5 AMP POLARIZED 2.218 IN LG X 1 IN W X 1 IN D 22KNCC2500GGSP (78277)	EA	REF	*	*	*	*	*	*			15	K4
PADZZ	5945-914-4413	RELAY ARMATURE K1 SPDT 120V AC, 0.5... AMP, 28 VDC 0.5 AMP POLARIZED 3.156 IN CONTINUED	EA	1	*	*	*	*	*	*		3	15	K1

SECTION V

TM 11-5805-347-24P

(1) SMR CODE	(2) FEDERAL STOCK NUMBER	(3) DESCRIPTION REFERENCE NUMBER & MFR. CODE USABLE ON CODE	(4) UNIT OF MEAS	(5) QTY INC IN UNIT	(6) 30-DAY DS MAINT ALLOWANCE			(7) 30-DAY GS MAINT ALLOWANCE			(8) 1-YR ALW PER 100 EQUIP CNTGCT	(9) DEPOT MAINT ALW PER 100 EQUIP	(10) ILLUSTRATION	
					(a)	(b)	(c)	(a)	(b)	(c)			(a)	(b)
					1-20	21-50	51-100	1-20	21-50	51-100			FIGURE NO.	ITEM NO.
		CONTINUED												
PAOZZ	5945-226-4206	LG X 1.312 IN DIA 2A042160TGS1L (78277) RELAY ARMATURE K11 115V AC, 1 AMP, 29V, 1 AMP 1.406 IN LG X 0.734 IN W X 0.734 IN H TL154-2C48VDC (02288)	EA	2	*	*	*	*	*	*	3	15	K11	
PAOZZ	5945-226-4206	RELAY ARMATURE K12 115K AC, 1 AMP, 29V, 1 AMP 1.406 IN LG X 0.734 IN W X 0.734 IN H TL154-2C48VDC (02288)	EA	REF	*	*	*	*	*	*	3	15	K12	
PAOZZ	5945-813-9113	RELAY ARMATURE K3 115V AC, 1 AMP, 29... VDC, 1 AMP 1.406 IN LG X 0.734 IN W X 1.172 IN H TL154-2C24VDC (02288)	EA	3	*	*	*	*	*	*	3	15	K3	
PAOZZ	5945-813-9113	RELAY, ARMATURE K6 115V AC, 1 AMP, 29... VDC, 1 AMP 1.406 IN LG X 0.734 IN W X 1.172 IN H TL154-4C24VDC (02288)	EA	REF	*	*	*	*	*	*	3	15	K6	
PAOZZ	5945-813-9113	RELAY, ARMATURE K8 115V AC, 1 AMP, 29... VDC, 1 AMP 1.406 IN LG X 0.734 IN W X 1.172 IN H TL154-4C24VDC (02288)	EA	REF	*	*	*	*	*	*	3	15	K8	
PAOZZ	5945-823-3026	RELAY, ARMATURE K7 115V AC, 2 AMP, 29... VDC, 2 AMP POLARIZED 1.402 IN LG X 1.171 IN W X 0.734 IN D TL154-2C24VDC (02288)	EA	2	*	*	*	*	*	*	3	15	K7	
PAOZZ	5945-823-3026	RELAY, ARMATURE K10 115V AC, 2 AMP, 29... VDC, 2 AMP POLARIZED 1.402 IN LG X 1.171 IN W X 0.734 IN D TL154-2C24VDC (02288)	EA	REF	*	*	*	*	*	*	3	15	K10	
PAOZZ	5945-823-3025	DELAY, ARMATURE K9 115V AC, 2 AMPS, 29... VDC, 2 AMPS POLARIZED 1.402 IN LG X 1.171 IN W X 0.734 IN D TL154-4C48VDC (02288)	EA	1	*	*	*	*	*	*	3	15	K9	
PAOZZ	5945-226-4205	RELAY, ARMATURE K5 120V AC, 1 AMP 1.313 IN LG X 1.313 IN W X 2.000 IN H 41R02500FKBSL (78277)	EA	1	*	*	*	*	*	*	3	15	K5	
XDFZZ		RESISTOR, FIXED, WIRE WOUND R22 30 OHM... PORM5PCT 10 W 0.750 IN LG X 0.375 IN W X 0.344 IN THK F109 (44655)	EA	1	*	*	*	*	*	*			R22	
PAFZZ	5905-835-2156	RESISTOR, FIXED, WIRE WOUND R1 50 OHM... PORM5PCT 10 W 1.219 IN LG X 0.375 IN W X 0.344 IN THK F111 (44655)	EA	1	*	*	*	*	*	*	3		R1	
PAFZZ	5905-171-1975	RESISTOR FIXED, COMPOSITION R28 150 OHM PORM5PCT 2W RC42GF151J (81349)	EA	2	*	*	*	*	*	*	3		R28	
PAFZZ	5905-171-1975	RESISTOR, FIXED, COMPOSITION R29 150 OHM PORM5PCT 2W RC42GF151J (81349)	EA	REF	*	*	*	*	*	*	3		R29	

SECTION V

TM 11-5805-347-24P

(1) SMR CODE	(2) FEDERAL STOCK NUMBER	(3) DESCRIPTION REFERENCE NUMBER & MFR. CODE USABLE ON CODE		(4) UNIT OF MEAS	(5) QTY INC IN UNIT	(6) 30-DAY DS MAINT ALLOWANCE			(7) 30-DAY GS MAINT ALLOWANCE			(8) 1-YR ALW PER 100 EQUIP CNTGCT	(9) DEPOT MAINT ALW PER 100 EQUIP	(10) ILLUSTRATION	
						(a)	(b)	(c)	(a)	(b)	(c)			(a)	(b)
						1-20	21-50	51-100	1-20	21-50	51-100			FIGURE NO.	ITEM NO.
PAHZZ	5905-104-8350	RESISTOR, FIXED COMPOSITION R26.....	RC20GF221J (81349)	EA	1	*	*	*	*	*	*		3		R26
PAFZZ	5905-192-3973	RESISTOR, FIXED, COMPOSITION R25 470 OHM PORSPCT 1/2W	RC20GF471J (81349)	EA	1	*	*	*	*	*	*		3		R25
PAHZZ	5905-195-6453	RESISTOR, FIXED, COMPOSITION R27.....	RC20GF562J (81349)	EA	1	*	*	*	*	*	*		3		R27
PAHZZ	5961-556-2091	SEMICONDUCTOR DEVICE, DIODE CR7.....	1N270 (81349)	EA	4	*	*	*	*	*	*		3		CR7
PAHZZ	5961-556-2091	SEMICONDUCTOR DEVICE, DIODE CR8.....	1N270 (81349)	EA	REF	*	*	*	*	*	*		3		CR8
PAHZZ	5961-556-2091	SEMICONDUCTOR DEVICE, DIODE CR9.....	1N270 (81349)	EA	REF	*	*	*	*	*	*		3		CR9
PAHZZ	5961-556-2091	SEMICONDUCTOR DEVICE, DIODE CR10.....	1N270 (81349)	EA	REF	*	*	*	*	*	*		3		CR10
XDFZZ		SOCKET, CAPACITOR X C5 6 CONT MOLDED.... PLASTIC 1.813 IN LG X 1.109 IN W X 0.625 IN H	TS5 (74861)	EA	2	*	*	*	*	*	*				XC5
XDFZZ		SOCKET, CAPACITOR XC6 6 CONT MOLDED.... PLASTIC 1.813 IN LG X 1.109 IN W X 0.625 IN H	TS5 (74861)	EA	REF	*	*	*	*	*	*				XC6
XDFZZ		SOCKET, CAPACITOR, XC1 8 CONT MOLDED PLASTIC 2.250 IN LG X 1.375 IN W X 0.625 IN H	TS10 (74861)	EA	2	*	*	*	*	*	*				XC1
XDFZZ		SOCKET, CAPACITOR XC2 8 CONT MOLDED.... PLASTIC 2.250 IN LG X 1.375 IN W X 0.625 IN H	TS10 (74861)	EA	REF	*	*	*	*	*	*				XC2
PAFZZ	5935-063-5789	SOCKET, ELECTRON TUBE XK1 8 CONT.....	TS101P01 (81349)	EA	2	*	*	*	*	*	*		3		XK1
PAFZZ	5935-063-5789	SOCKET, ELECTRON TUBE XK1 8 CONT.....	TS101P01 (81349)	EA	REF	*	*	*	*	*	*		3		XK5
PAFZZ	5935-755-2910	SOCKET, RELAY XK2 9 CONT 1.375 IN LG X. 0.844 IN W X 0.344 IN H	AT155 (78277)	EA	2	*	*	*	*	*	*		3		XK2
PAFZZ	5935-755-2910	SOCKET, RELAY XK4 9 CONT 1.375 IN LG X. 0.844 IN W X 0.344 IN H	AT155 (78277)	EA	REF	*	*	*	*	*	*		3		XK4
PAFZZ	5935-830-6349	SOCKET, RELAY XK7 10 CONT MOLDED PLASTIC 0.969 IN LG X 0.750 IN W X 0.344 IN H	30055-1 (02288)	EA	4	*	*	*	*	*	*		3		XK7
PAFZZ	5935-830-6349	SOCKET, RELAY XK11 10 CONT MOLDED PLASTIC 0.969 IN LG X 0.750 IN W X 0.344 IN H	30055-1 (02288)	EA	REF	*	*	*	*	*	*		3		XK11
PAFZZ	5935-830-6349	SOCKET, RELAY XK12 10 CONT MOLDED PLASTIC 0.969 IN LG X 0.750 IN W X 0.344 IN H	30055-1 (02288)	EA	REF	*	*	*	*	*	*		3		XK12

SECTION V

TM 11-5805-347-24P

(1) SMR CODE	(2) FEDERAL STOCK NUMBER	(3) DESCRIPTION REFERENCE NUMBER & MFR. CODE USABLE ON CODE	(4) UNIT OF MEAS	(5) QTY INC IN UNIT	(6) 30-DAY DS MAINT ALLOWANCE			(7) 30-DAY GS MAINT ALLOWANCE			(8) 1-YR ALW PER 100 EQUIP CNTGCT	(9) DEPOT MAINT ALW PER 100 EQUIP	(10) ILLUSTRATION	
					(a)	(b)	(c)	(a)	(b)	(c)			(a)	(b)
					1-20	21-50	51-100	1-20	21-50	51-100			FIGURE NO.	ITEM NO.
PAFZZ	5935-830-6349	SOCKET, RELAY XK13 10 CONT MOLDED..... PLASTIC 0.969 IN LG X 0.750 IN W X 0.344 IN H 30055-1 (02288)	EA	REF	*	*	*	*	*	*		3		XK13
XDFZZ		SOCKET, RELAY XK3 16 CONT MOLDED..... PLASTIC 1.203 IN LG x 0.750 IN W X 0.344 IN H 30055-2 (02288)	EA	5	*	*	*	*	*	*				XK3
XDFZZ		SOCKET, RELAY XK6 16 CONT MOLDED..... PLASTIC 1.203 IN LG X 0.750 IN W X 0.344 IN H 30055-2 (02288)	EA	REF	*	*	*	*	*	*				XK6
XDFZZ		SOCKET, RELAY XK8 16 CONT MOLDED..... PLASTIC 1.203 IN LG X 0.750 IN W X 0.344 IN H 30055-2 (02288)	EA	REF	*	*	*	*	*	*				XK8
XDFZZ		SOCKET, RELAY XK9 16 CONT MOLDED..... PLASTIC 1.203 IN LG X 0.750 IN W X 0.344 IN H 30055-2 (02288)	EA	REF	*	*	*	*	*	*				XK9
XDFZZ		SOCKET, RELAY XK10 16 CONT MOLDED..... PLASTIC 1.203 IN LG X 0.750 IN W X 0.344 IN H 30055-2 (02288)	EA	REF	*	*	*	*	*	*				XK10
PAFZZ	5940-226-4173	TERMINAL BOARD TB2 15 TERM PLASTIC..... BARRIER TYPE 6.281 IN LG X 0.563 IN W X 0.406 IN H 599-15-2004 (75382)	EA	1	*	*	*	*	*	*		3		T82
XDFZZ		TERMINAL BOARD TB1 20 TERM PLASTIC..... BARRIER TYPE 6.281 IN X 0.563 IN W X 0.406 IN H 88120 (96238)	EA	1	*	*	*	*	*	*				T81
PAFZZ	5950-856-0808	TRANSFORMER, AUDIO FREQUENCY T3 600 OHM. PRI IMPEDANCE, 600 OHM SECD IMPEDANCE FULLY INCLOSED CASE 1.750 IN LG X 1.375 IN DIA A473 (81095)	EA	1	*	*	*	*	*	*		3		T3
PAFZZ	5950-806-5113	TRANSFORMER, AUDIO FREQUENCY T1 10,000.. OHM PRI IMPEDANCE, 4000 OHM SECD IMPEDANCE FULLY INCLOSED CASE 1-9/16 IN LG X 61/64 IN DIA H14 (80223)	EA	1	*	*	*	*	*	*		3		T1
PAFZZ	5950-892-8245	TRANSFORMER, POWER, STEP-DOWN T2 115V.. 60 CPS PRI WIND 48V, 350 MA SECD FULLY INCLOSED CASE 2.313 IN LG X 2.063 IN W X 3.125 IN H B11461 (96238)	EA	1	*	*	*	*	*	*		3		T2
PAFZZ	5961-853-6092	TRANSISTOR Q1 PNP TYPE 0.260 IN LG X... 0.320 IN DIA ST113 (96238)	EA	1	*	*	*	*	*	*		2		Q1
PAFZZ	5910-893-5179	CAPACITOR, FIXED, ELECTROLYTIC C3 20 UF. 50 VDCW 0.625 IN LG X 0.375 IN DIA TE1305 (56289)	EA	2	*	*	*	*	*	*		3	24	C3

SECTION V
(1) (2)

TM 11-5805-347-24P

SMR CODE	FEDERAL STOCK NUMBER	DESCRIPTION REFERENCE NUMBER & MFR. CODE USABLE ON CODE	(4) UNIT OF MEAS	(5) QTY INC IN UNIT	(6) 30-DAY DS MAINT ALLOWANCE			(7) 30-DAY GS MAINT ALLOWANCE			(8) 1-YR ALW PER 100 EQUIP CHTGY	(9) DEPOT MAINT ALW PER 100 EQUIP	(10) ILLUSTRATION	
					(a)	(b)	(c)	(a)	(b)	(c)			(a)	(b)
					1-20	21-50	51-100	1-20	21-50	51-100			FIGURE NO.	ITEM NO.
PAFZZ	5910-893-5179	CAPACITOR, FIXED, ELECTROLYTIC C4 20 UF, SO VDCW 0.625 IN LG X 0.375 IN DIA TE1305 (56289)	EA	REF	*	*	*	*	*	*		3	24	C4
PAFZZ	5910-819-7093	CAPACITOR, FIXED, ELECTROLYTIC C10 35 UF JO VOW 1.250 IN LG X 0.375 IN DIA TE1306 (56289)	EA	1	*	*	*	*	*	*		3	24	C10
PAHZZ	5910-827-1209	CAPACITOR, FIXED, ELECTROLYTIC C11..... TE1211 (56289)	EA	1				*	*	*		3	24	C11
XDHZZ		RESISTOR, FIXED, COMPOSITION R4..... RC20GF270J (81349)	EA	1				*	*	*		3	24	R4
PAFZZ	5905-435-1720	RESISTOR, FIXED, COMPOSITION R6 24 OHM.. PORM5PCT 1/2W RC20GF240J (81349)	EA	2	*	*	*	*	*	*		3	24	R6
PAFZZ	5905-435-1720	RESISTOR, FIXED, COMPOSITION R7 24 OHM.. PORM5PCT 1/2 RC20GF240J (81349)	EA	REF	*	*	*	*	*	*		3	24	R7
XDHZZ		RESISTOR, FIXED, COMPOSITION R10..... RC20GF101J (81349)	EA	2				*	*	*		3	24	R10
XDHZZ		RESISTOR, FIXED, COMPOSITION R16..... RC20GF101J (81349)	EA	REF				*	*	*			24	R16
XDHZZ		RESISTOR, FIXED, COMPOSITION R19..... RC20GF151J (81349)	EA	2				*	*	*			24	R19
XDHZZ		RESISTOR, FIXED, COMPOSITION R20..... RC20GF151J (81349)	EA	REF				*	*	*			24	R20
PAFZZ	5905-279-1922	RESISTOR, FIXED, COMPOSITION R2 270 OHM.. PORM5PCT 2W RC42GF271J (81349)	EA	1	*	*	*	*	*	*			24	R2
PAFZZ	5905-192-3973	RESISTOR, FIXED, COMPOSITION R3..... RC20GF471J (81349)	EA	1	*	*	*	*	*	*		3	24	R3
XDFZZ		RESISTOR, FIXED COMPOSITION R23 620 OHM PORM5PCT 1W RC32GF621J (81349)	EA	1	*	*	*	*	*	*			24	R23
XDFZZ		RESISTOR, FIXED, COMPOSITION R24 1000... OHM PORM5PCT 1W RC32GF102J (81349)	EA	1	*	*	*	*	*	*			24	R24
XDFZZ		RESISTOR, FIXED, COMPOSITION R13 1500... OHM PORM5PCT 1w RC32GF152 (81349)	EA	2	*	*	*	*	*	*			24	R13
XDFZZ		RESISTOR, FIXED, COMPOSITION R14 1500... OHM PORM5PCT RC32GF151J (81349)	EA	REF	*	*	*	*	*	*			24	R14
PAHZZ	5905-190-8881	RESISTOR, FIXED, COMPOSITION R15..... RC20GF182J (81349)	EA	4				*	*	*		3	24	R15
PAHZZ	5905-190-8881	RESISTOR, FIXED COMPOSITION R17..... RC20GF182J (81349)	EA	REF				*	*	*		3	24	R17
PAHZZ	5905-190-8881	RESISTOR, FIXED COMPOSITION R18..... RC20GF182J (81349)	EA	REF				*	*	*		3	24	R18
PAHZZ	5905-190-8881	RESISTOR, FIXED COMPOSITION R21..... RC20GF102J (81349)	EA	REF				*	*	*		3	24	R21
PAFZZ	5905-104-8353	RESISTOR, FIXED COMPOSITION R11 4700... OHM PORM5PCT 1W RC32GF472J (81349)	EA	1	*	*	*	*	*	*		3	24	R11

SECTION V
(1)

(2)

(3)

TM 11-5805-347-24P

SMR CODE	FEDERAL STOCK NUMBER	DESCRIPTION REFERENCE NUMBER & MFR. CODE USABLE ON CODE	(4) UNIT OF MEAS	(5) QT, INC IN UNIT	(6) 30-DAY DS MAINT ALLOWANCE			(7) 30-DAY GS MAINT ALLOWANCE			(8) 1-YR ALW PER 100 EQUIP CNTGCV	(9) DEPOT MAINT ALW PER 100 EQUIP	(10) ILLUSTRATION	
					(a)	(b)	(c)	(a)	(b)	(c)			(a)	(b)
					1-20	21-50	51-100	1-20	21-50	51-100			FIGURE NO.	ITEM NO.
PAHZZ	5905-111-4744	RESISTOR, FIXED, COMPOSITION R8 RC20GF512J (814349)	EA	2				*	*	*		3	24	R8
PAHZZ	5905-111-4744	RESISTOR, FIXED, COMPOSITION R9 RC20GF512J (81349)	EA	REF				*	*	*		3	24	R9
PAFZZ	5905-249-4200	RESISTOR, FIXED, COMPOSITION R5 RC20GF912J (81349)	EA	1	*	*	*	*	*	*		3	24	R5
XDHZZ		RESISTOR, VARIABLE R12 275-1-502 (80294)	EA	1				*	*	*			24	R12
XDFZZ		SEMICONDUCTOR DEVICE, DIODE CR5 SILICON 0.315 IN LG X 0.400 IN DIA 1M1825 (81223)	EA	2	*	*	*	*	*	*			24	CR5
XDFZZ		SEMICONDUCTOR DEVICE, DIODE CR6 SILICON 0.315 IN LG X 0.400 IN DIA 1M1BZ5 (81223)	EA	REF	*	*	*	*	*	*			24	CR6
PAFZZ	5961-833-9050	SEMICONDUCTOR DEVICE, DIODE CR1 SILICON 0.400 IN LG X 0.200 IN DIA 1N2482 (81867)	EA	4	*	*	*	*	*	*		3	24	CR1
PAFZZ	5961-833-9050	SEMICONDUCTOR DEVICE, DIODE CR2 SILICON 0.400 IN LG X 0.200 IN DIA 1N2482 (81867)	EA	REF	*	*	*	*	*	*		3	24	CR2
PAFZZ	5961-833-9050	SEMICONDUCTOR DEVICE, DIODE CR3 SILICON 0.400 IN LG X 0.200 IN DIA 1N2482 (81867)	EA	REF	*	*	*	*	*	*		3	24	CR3
PAFZZ	5961-833-9050	SEMICONDUCTOR DEVICE, DIODE CR SILICON 0.400 IN LG X 0.200 IN DIA 1N2482 (81867)	EA	REF	*	*	*	*	*	*		3	24	CR4
PAHZZ	5961-853-6094	TRANSISTOR Q2. ST114 (96238)	EA	1				*	*	*		2	24	Q2

INDEX-FEDERAL STOCK NUMBER AND REFERENCE NUMBER CROSS-REFERENCE TO FIGURE AND ITEM NUMBER					
STOCK NUMBER	FIGURE NO.	ITEM NO.	STOCK NUMBER	FIGURE No.	ITEM NO
5355-552-1810	1		5905-141-1130	15	R6
5355-552-1810	1		5905-141-1130	15	R14
5355-556-0145	1		5905-141-1130	15	R22
5355-616-9604	1		5905-141-1130	15	R28
5805-073-0295	18		5905-111-1130	15	R33
5805-073-0302	23		5905-141-1130	17	R4
5805-073-0303	19		5905-141-1130	17	R6
5805-073-0305	15		5905-141-1130	17	R11
5805-073-3247	15		5905-141-1130	17	R15
5805-073-5397	15		5905-141-1165	18	R19
5805-073-5393	15		5905-141-1165	20	R12
5805-205-5588	20		5905-141-1165	23	R3
5905-104-8337	22	R14	5905-141-1268	17	R7
5905-104-8348	20	R19	5905-141-1268	17	R12
5905-104-8350		R26	5905-171-1975		R28
5905-104-8350	19	R17	5905-171-1975		R29
5905-104-8350	20	R20	5905-171-1998	20	R17
5905-101-8353	24	R11	5905-171-1998	21	R12
5905-104-8438	18	R31	5905-171-2004	18	R20
5905-106-1274	24	R2	5905-171-2004	18	R21
5905-106-9345	18	R9	5905-171-2004	19	R1
5905-106-9348	19	R5	5905-171-2004	19	R6
5905-106-9348	19	R10	5905-171-2004	22	R3
5905-111-4734	15	R24	5905-171-2004	23	R9
5905-111-4744		R40	5905-185-5810	18	R13
5905-111-4744	18	R22	5905-185-8510	17	R2
5905-111-4744	18	R24	5905-185-8510	17	R17
5905-111-4744	19	R13	5905-185-8510	18	R10
5905-111-4744	19	R16	5905-185-8510	18	R15
5905-111-4744	19	R20	5905-185-8510	19	R2
5905-111-4744	19	R21	5905-185-8510	19	R7
5905-111-4744	19	R23	5905-185-8510	20	R2
5905-111-4744	19	R25	5905-185-8510	20	R4
5905-111-4744	24	R8	5905-185-8510	21	R2
5905-111-4744	24	R9	5905-185-8510	21	R3
5905-111-4753	19	R19	5905-185-8510	22	R7
5905-111-4753	19	R24	5905-185-8510	22	R15
5905-111-4753	22	R27	5905-185-8510	23	R8
5905-114-5388	18	R11	5905-185-8510	23	R10
5905-114-5388	20	R9	5905-185-8510	23	R17
5905-114-5388	20	R21	5905-185-8510	23	R20
5905-114-5430	19	R14	5905-190-8880	15	R2
5905-114-5489	15	R1	5905-190-8880	15	R9
5905-114-5489	15	R7	5905-190-8880	15	R10
5905-114-5489	15	R13	5905-190-8880	15	R11
5905-114-5489	15	R26	5905-190-8880	15	R12
5905-114-5489	15	R36	5905-190-8880	15	R16
5905-114-5489	17	R3	5905-190-8880	15	R17
5905-114-5489	17	R8	5905-190-8880	15	R19
5905-114-5489	17	R13	5905-190-8880	15	R20
5905-116-8565	21	R6	5905-190-8880	21	R7
5905-116-8569	21	R13	5905-190-8880	21	R11
5905-121-9922	18	R33	5905-190-8881	18	R26
5905-121-9922	20	R8	5905-190-8881	24	R15
5905-141-0594	22	R8	5905-190-8881	24	R17
5905-141-0598	15	R22	5905-190-8881	24	R18
5905-141-0598	15	R33	5905-190-8881	24	R21
5905-141-0598	23	R11	5905-190-8887	18	R26
5905-141-0600	19	R15	5905-190-8887	22	R5
5905-141-0723	15	R39	5905-190-8887	23	R16
5905-141-0723	21	R1	5905-192-0390	15	R32
5905-141-0723	21	R14	5905-192-0649	19	R3
5905-141-0723	22	R2			
5905-141-0723	23	R14			

STOCK NUMBER	FIGURE NO	ITEM NO	STOCK NUMBER	FIGURE NO	ITEM NO
5905-192-0649					
5905-192-0649	19	R8	5905-279-3499	17	R9
5905-192-0649	20	R3	5905-279-3499	17	R14
5905-192-0649	20	R5	5905-279-3499	21	R5
5905-192-0649	22	R11	5905-279-3499	21	R10
5905-192-0649	23	R23	5905-279-3499	23	R19
5905-192-0649	24	R3	5905-279-3504	15	R5
5905-192-3971	15	R16	5905-279-3504	17	R10
5905-192-3971	18	R23	5905-279-3504	22	R6
5905-192-3973		R25	5905-279-3504	22	R24
5905-192-3973	24	R3	5905-279-3504	23	R24
5905-195-6453		R27	5905-279-3504	23	R18
5905-195-6453		R28	5905-279-3504	23	R24
5905-195-6453	15	R38	5905-279-3505	18	R18
5905-195-6453	20	R14	5905-279-3505	23	R12
5905-195-6453	22	R28	5905-279-3511	15	R30
5905-195-6453	23	R13	5905-279-3511	19	R22
5905-195-6791	15	R25	5905-279-3511	22	R23
5905-195-6791	15	R35	5905-435-1420	24	R6
5905-195-6791	23	R22	5905-435-1420	24	R7
5905-195-6806	15	R31	5905-556-3783	18	R4
5905-195-6806	17	R19	5905-556-3783	18	R6
5905-195-6806	20	R1	5905-643-5626	18	R1
5905-195-6806	22	R4	5905-643-5626	18	R1
5905-195-6806	22	R9	5905-751-2 72	19	R11
5905-195-6806	22	R10	5905-751- 992	19	R12
5905-249-4195	22	R13	5905-826-2291		A1
5905-249-4200	24	R4	5905-826-2291	21	R4
5905-249-4200	24	R5	5905-826-2291	23	R15
5905-252-5436	20	R13	5905-835-2156		R1
5905-254-9201	22	R16	5905-860-0800	15	T2
5905-279-1751	17	R18	5905-860-0801	15	T3
5905-279-1751	18	R3	5905-883-6313	15	R4
5905-279-1751	18	R8	5905-883-6313	18	R2
5905-279-1751	18	R12	5905-883-6313	23	R7
5905-279-1751	23	R2	5905-935-8542	18	R17
5905-279-1757	18	R14	5905-935-8543	20	R11
5905-279-1876	19	R15	5910-023-9871	18	C3
5905-279-1751	22	R5	5910-023-9871	18	C4
5905-192-1876	23	R6	591 03 9871	23	C7
5905-279-1877	15	R23	591 03 9871	18	C7
5905-279-1877	15	R34	591 03 9871	23	C7
5905-279-1877	20	R6	5910-023-9871	18	C4
5905-279-1877	20	R15	5910-101-3999	23	C10
5905-279-1880	22	R26	5910-101-4714	23	C10
5905-279-1922	18	R32	5910-160-1158	23	C10
5905-279-2616	24	R2	5910-226-29	15	C9
5905-279-2616	18	R25	5910-226-2930	15	C8
5905-279-2616	18	R28	5910-542-7362	21	C2
5905-279-2616	18	R29	5910-543-1117	19	C2
5905-279-2616	19	R11	5910-543-1117	19	C4
5905-279-2616	20	R7	5910-615-9975	18	C1
5905-279-2616	22	R1	5910-615-9975	18	C2
5905-279-2495	21	R9	5910-666-5252	18	C9
5905-279-3496	23	R4	5910-666-6762	23	C8
5905-279-3496	23	R5	5910-682-3030	18	C8
5905-279-3499	15	R3	5910-682-3030	18	C7
5905-279-3499	15	R8	5910-682-3030	19	C8
5905-279-3499	15	R13	5910-682-3030	19	C10
5905-279-3499	15	R27	5910-682-3030	20	C14
5905-279-3499	15	R37	5910-682-3030	21	C5
5905-279-3499	15		5910-682-3030	22	C11
			5910-682-3030	23	C2

STOCK NUMBER	FIGURE NO.	ITEM NO.	STOCK NUMBER	FIGURE NO.	ITEM NO.
5910-682-3030	23	C3	5910-951-7074	18	C3
5910-682-3030	23	C4	5910-951-7074	23	C7
5910-691-1249	15	C8	5910-951-7391	23	C10
5910-691-1249	15	C13	5910-951-8633	23	C10
5910-727-2550	2	C10	5910-966-8499		C7
5910-727-4005	18	C5	5910-966-8499		C8
5910-728-2810	23	C10	5910-966-8499		C9
5910-755-9238	22	C2	5910-966-8499		C12
5910-772-1820	23	C10	5910-966-8499		C13
5910-804-2578	13	C3	5910-966-8499		C14
5910-819-7093	24	C10	5910-984-4142	18	C4
5910-823-1793	18	C3	5910-984-4144	18	C4
5910-827-1206	17	C8	5910-984-4146	23	C7
5910-827-1206	22	C1	5910-984-5253	18	C4
5910-827-1206	22	C10	5910-984-7786	23	C10
5910-827-1209	17	C9	5910-984-8369	18	C3
5910-827-1209	20	C12	5910-984-8369	23	C7
5910-827-1209	21	C8	5910-984-8370	23	C10
5910-827-1209	24	C11	5910-984-8370	18	C7
5910-827-1211	18	C9	5910-984-8370	23	C7
5910-827-1218	22	C12	5910-984-8370	23	C10
5910-834-4900	15	C1	5910-984-8375	23	C10
5910-834-4900	15	C2	5910-985-4092	22	C3
5910-834-4900	15	C3	5910-985-4092	22	C4
5910-834-4900	15	C5	5910-985-4092	22	C5
5910-834-4900	15	C7	5910-985-4092	22	C7
5910-834-4900	15	C9	5910-988-0777	23	C10
5910-834-4900	15	C11	5910-989-4710	15	C1
5910-834-4900	15	C12	5910-989-4710	15	C2
5910-834-4900	15	C14	5910-990-5177	23	C10
5910-834-4900	15	C15	5915-073-0310		Z1
5910-834-4900	15	C16	5915-073-0310	15	Z2
5910-834-4900	17	C4	5920-073-0305	15	
5910-834-4900	17	C7	5920-504-8634	15	
5910-834-4900	18	C13	5930-072-9488		
5910-834-4900	20	C1	5930-073-8773		
5910-834-4900	20	C12	5930-073-8774		
5910-834-4900	21	C4	5930-073-8775		
5910-834-4900	22	C6	5930-578-2353		
5910-834-4900	23	C1	5930-655-1507		
5910-834-9721	15	C4	5930-724-2735		
5910-834-9721	15	C6	5930-892-9438		
5910-834-9721	19	C1	5935-063-5789		KK1
5910-834-9721	20	C2	5935-063-5789		KK5
5910-835-2156		R1	5935-608-0518	15	J1
5910-836-9272	17	C2	5935-608-0518	15	J2
5910-836-9274	20	C3	5935-608-0518	15	J3
5910-837-4582	15	C10	5935-608-0518	15	J4
5910-837-4582	18	C11	5935-755-2910		KK2
5910-845-8675	18	C12	5935-755-2310		KK4
5910-845-8675	19	C7	5935-830-6349		KK7
5910-845-8675	19	C9	5935-830-6349		KK11
5910-825-8675	19	C10	5935-830-6349		KK12
5910-895-7395	18	C5	5935-530-6349		KK13
5910-853-5179	24	C3	5940-226-4173		TB2
5910-853-5179	24	C4	5945-226-4205	15	K5
5910-895-2538	23	C13	5945-236-4206	15	K11
5910-950-5683	18	C4	5945-226-4206	15	K12
5910-950-6416	23	C10	5945-226-4206	15	K11
5910-951-7063	18	C4	5945-226-4206	15	K12
5910-951-7063	23	C7	5945-587-5036		

STOCK NUMBER	FIGURE NO.	ITEM NO.	STOCK NUMBER	FIGURE NO.	ITEM NO.
5945-813-9113	15	K3	5961-556-2019	22	CR1
5945-813-9113	15	K6	5961-556-2019	22	CR2
5945-813-9113	15	K8	5961-556-2019	22	CR3
5945-823-3025	15	K9	5961-556-2019	22	CR4
5945-823-3026	15	K7	5961-556-2019	22	CR5
5945-823-3026	15	K10	5961-556-2019	23	CR1
5945-914-4413	15	K1	5961-556-2019	23	CR2
5950-064-0680	21	T1	5961-833-9050	24	CR1
5950-064-0680	21	T2	5961-833-9050	24	CR2
5950-064-0680	21	T4	5961-833-9050	24	CR3
5950-806-5113		T1	5961-833-9050	24	CR4
5950-853-5972	23	T3	5961-853-6092		Q1
5950-853-5973	22	T2	5961-853-6094	15	Q1
5950-853-6047	17	L1	5961-853-6094	15	Q2
5950-853-6047	19	L3	5961-853-6094	15	Q5
5950-855-9413	15	T1	5961-853-6094	15	Q7
5950-855-9413	18	T1	5961-853-6094	17	Q1
5950-855-9413	21	T3	5961-853-6094	17	Q2
5950-855-9413	23	T1	5961-853-6094	17	Q3
5950-856-0808		T3	5961-853-6094	17	Q5
5950-856-0808	15	T2	5961-853-6094	18	Q1
5950-856-0808	15	T3	5961-853-6094	18	Q2
5950-856-0808	15	T4	5961-853-6094	18	Q3
5950-856-0808	15	T6	5961-853-6094	18	Q4
5950-856-0808	15	T7	5961-853-6094	18	Q5
5950-856-0808	17	T1	5961-853-6094	18	Q6
5950-860-0801	15	T5	5961-853-6094	19	Q1
5950-892-8245		T2	5961-853-6094	19	Q3
5961-226-4635	20	Q4	5961-853-6094	19	Q4
5961-226-4635	22	Q5	5961-853-6094	19	Q5
5961-226-4635	22	Q7	5961-853-6094	20	Q1
5961-226-4636	19	Q2	5961-853-6094	20	Q2
5961-226-7535	15	CR5	5961-853-6094	20	Q3
5961-226-7535	15	CR1	5961-853-6094	20	Q5
5961-226-7535	15	CR2	5961-853-6094	21	Q6
5961-226-7535	15	CR3	5961-853-6094	21	Q1
5961-226-7535	15	CR4	5961-853-6094	21	Q2
5961-226-7535	15	CR5	5961-853-6094	22	Q1
5961-226-7535	15	CR6	5961-853-6094	22	Q2
5961-226-7535	15	CR7	5961-853-6094	22	Q3
5961-226-7535	15	CR8	5961-853-6094	22	Q4
5961-226-7535	21	CR1	5961-853-6094	22	Q8
5961-226-7535	21	CR2	5961-853-6094	23	Q1
5961-226-7535	21	CR3	5961-853-6094	23	Q2
5961-226-7535	21	CR4	5961-853-6094	23	Q3
5961-226-7537	15	Q3	5961-853-6094	23	Q4
5961-226-7538	15	Q4	5961-853-6094	23	Q5
5961-226-7538	15	Q6	5961-853-6094	24	Q2
5961-226-7538	15	Q8	5961-892-0734	15	CR9
5961-226-7538	15	Q9	5961-892-0734	15	CR10
5961-226-7538	17	Q4	5961-892-0734	15	CR11
5961-226-7538	21	Q3	5961-892-0734	15	CR12
5961-226-7538	22	Q6	5961-892-0734	18	CR1
5961-556-2091		CR7	5961-892-0734	18	CR2
5961-556-2091		CR8	5961-892-0734	20	CR1
5961-556-2091		CR9	6210-232-8166		DS1
5961-556-2019		CR10	6210-260-7645		DS5
5961-556-2019	17	CR1	6210-299-5307		DS4
5961-556-2019	17	CR2	6210-500-3618		DS2
5961-556-2019	21	CR5	6210-836-2564		DS6
5961-556-2019	21	CR6	5240-155-8706	15	

SECTION VII

TM 11-5805-347-24P

REFERENCE N O .	MFR CODE	FIG. NO.	ITEM NO.	REFERENCE N O .	MFR CODE	FIG. NO.	ITEM NO.
AT155	78277		XK2	CM30D751J			
AT155	78277		XK4	CM300821J	81349	23	C10
AT36-1	78277			CM300911J	81349	23	C10
A67J	81095		T3	CM30E152J	81349	23	C10
A7190-1	96238	23	T3	CM30F112JP3	81349	18	C5
A7190-2	96238	22	T2	CM30F122JP3	81349	23	C10
BSTD104-2	96238			CM30F152JP3	81349	23	C10
B11461	96238		T2	CM30F162JP3	81349	23	C10
B13351	95238		LL	CM30F202JP3	81349	23	C10
B8120	96238		T81	CM30F302JP3	81349	23	C10
CM150111J	81349	18	C3	CM35E432JN3	81349	20	C5
CM150111J	81349	23	C7	CM35E822J	81349	18	C6
CM150121JP3	81349	18	C3	CM35F103JP3	81349	19	C3
CM150121JP3	81349	23	C7	CM35F103JP3	81349	18	C10
CM150300JP3	81349	18	C3	CM35F103JP3	81349	19	C8
CM150330JP3	81349	18	C3	CM35F103JP3	81349	19	C12
CM150360JP3	81349	18	C3	CM35F103JP3	81349	19	C13
CM150390JP3	81349	18	C3	CM35F622JP3	81349	23	C9
CM150430J	81349	18	C3	D53588010-1	81349	25	C8
CM150470J	81349	18	C3	D53588010-2	96238	15	
CM150510JP3	81349	18	C3	D53588020	96238	15	
CM150560JP3	81349	18	C3	D53588030	96238	22	
CM150620J	81349	18	C3	D53588040	96238	21	
CM150680JP3	81349	18	C3	D53588050	96238	18	
CM150750J	81349	18	C3	D53588060	96238	23	
CM150820JP3	81349	18	C3	D53588070	96238	19	
CM150910J	81349	18	C3	D53588080	96238	15	
CM150101J	81349	23	C10	D535832000	96238	20	
CM150221J	81349	23	C7	D53832000	96238		Z1
CM150241J	81349	23	C7	F02GR125A	96238	15	Z2
CM15E2710	72136	18	C6	F109	81349	15	F1
CM15F101JP3	81349	18	C3	F111	44655		R22
CM15F101JP3	81349	23	C7	HD4-1-100B	44655		R1
CM15F111JP3	81349	23	C10	HD4-1-100B	00686	18	C1
CM15F121J	81349	23	C10	H14	00686	18	C2
CM15F131J	81349	23	C10	LH62BB2	80223		T1
CM15F131JP3	81349	18	C3	LH62BR2	81349	15	DS4
CM15F131JP3	81349	23	C7	L12A	81349		DS2
CM15F151JP3	81349	18	C3	L12A	82389	15	J1
CM15F151JP3	81349	23	C7	L12A	82389	15	J2
CM15F161J	81349	23	C10	L12A	82389	15	J3
CM15F161JP3	81349	18	C3	MMT1M	82389	15	J4
CM15F161JP3	81349	23	C7	MMT1M	00348	22	T1
CM15F181JP3	81349	18	C3	MMT1M	00348	15	T1
CM15F181JP3	81349	18	C4	MMT1M	00348	16	T1
CM15F181JP3	81349	23	C7	MMT1M	00348	21	T3
CM15F201JP3	81349	18	C3	MMT19M	00348	23	T1
CM15F201JP3	81349	18	C6	MMT19M	00348	21	T1
CM15F201JP3	81349	23	C7	MMT19M	00348	21	T2
CM15F221JP3	81349	18	C4	MS25089-4CR	00348	21	T4
CM15F271JP3	81349	23	C7	MS25100-22	96906		
CM15F301JP3	81349	18	C6	MS91528-1K2B	96906		
CM15F301JP3	81349	23	C7	MT333	96906	1	
CM15F331JP3	81349	18	C4	MT333	82389	15	J5
CM15F361JP3	81349	18	C4	PA024-4271	82389	15	J6
CM15F391JP3	81349	18	C4	PA024-4273	71590		
CM15F431JP3	81349	18	C4	PA024-5488	71590		
CM15F471JP3	81349	23	C10	PA1110-1074	71590		
CM15F511JP3	81349	23	C10	PO737-2	71590		
CM15241JP3	81349	18	C4	PO6-2JT	96238	15	
CM200151J	81349	23	C10	PO6-20T	07388	23	L1
CM20D181J	81349	23	C10	PO6-52T	81349	18	L1
CM20D2010J	81349	23	C10	PO6-52T	82549	17	L1
CM20D221J	81349	23	C10	P54-27T	82549	19	L3
CM20D241J	81349	23	C10	RC20GF101J	07388	23	L1
CM20D271J	81349	23	C10	RC20GF101J	81349	18	R16
CM20D272J	81349	23	C5	RC20GF101J	81349	18	R30
CM20D301J	81349	23	C10	RC20GF101J	81349	19	R4
CM20D331J	81349	23	C10	RC20GF101J	81349	19	R9
CM20D361J	81349	23	C10	RC20GF101J	81349	20	R16
CM20D391J	81349	23	C10	RC20GF101J	81349	21	R8
CM20D431J	81349	23	C10	RC20GF101J	81349	22	R16
CM20E122J	81349	23	C6	RC20GF101J	81349	22	R25
CM20F102JP3	81349	23	C10	RC20GF102J	81349	24	R10
CM20F561JP3	81349	23	C10	RC20GF102J	81349	24	R16
CM20F681JP3	81349	19	C3	RC20GF102J	81349	15	R31
CM20F681JP3	81349	23	C10	RC20GF102J	81349	17	R19
CM300132J	81349	23	C10	RC20GF102J	81349	20	R1
CM300182J	81349	23	C10	RC20GF102J	81349	22	R4
CM300621J	81349	23	C10	RC20GF102J	81349	22	R9
	81349	23	C10		81349	22	R19

SECTION VII

TM 11-5805-347-24P

REFERENCE NO.	MFR CODE	FIG. NO.	ITEM NO.	REFERENCE NO.	MFR CODE	FIG. NO.	ITEM NO.
RC20GF103J	81349	17	R2	RC20GF242J	81349	20	R15
RC20GF103J	81349	17	R17	RC20GF242J	81349	22	R26
RC20GF103J	81349	18	R10	RC20GF243J	81349	22	R27
RC20GF103J	81349	18	R13	RC20GF270J	81349	17	R21
RC20GF103J	81349	18	R15	RC20GF270J	81349	24	R4
RC20GF103J	81349	19	R2	RC20GF272J	81349	15	R6
RC20GF103J	81349	19	R7	RC20GF272J	81349	15	R14
RC20GF103J	81349	20	R2	RC20GF272J	81349	15	R22
RC20GF103J	81349	20	R4	RC20GF272J	81349	15	R28
RC20GF103J	81349	21	R2	RC20GF272J	81349	15	R33
RC20GF103J	81349	21	R3	RC20GF272J	81349	17	R4
RC20GF103J	81349	22	R7	RC20GF272J	81349	17	R6
RC20GF103J	81349	22	R15	RC20GF272J	81349	17	R11
RC20GF103J	81349	23	R8	RC20GF272J	81349	17	R15
RC20GF103J	81349	23	R10	RC20GF272J	81349	15	R3
RC20GF103J	81349	23	R17	RC20GF273J	81349	15	R8
RC20GF103J	81349	23	R20	RC20GF273J	81349	15	R15
RC20GF105J	81349	15	R32	RC20GF273J	81349	15	R27
RC20GF122J	81349	15	R2	RC20GF273J	81349	15	R37
RC20GF122J	81349	15	A9	RC20GF273J	81349	17	R9
RC20GF122J	81349	15	R10	RC20GF273J	81349	17	R14
RC20GF122J	81349	15	R11	RC20GF273J	81349	21	R5
RC20GF122J	81349	15	R12	RC20GF273J	81349	21	R10
RC20GF122J	81349	15	R16	RC20GF273J	81349	23	R19
RC20GF122J	81349	15	R17	RC20GF273J	81349	19	R19
RC20GF122J	81349	15	R19	RC20GF203J	81349	19	R24
RC20GF122J	81349	15	R20	RC20GF283J	81349	17	R18
RC20GF122J	81349	21	R7	RC20GF302J	81349	17	R18
RC20GF122J	81349	21	R11	RC20GF302J	81349	18	R3
RC20GF131J	81349	20	R13	RC20GF302J	81349	18	R8
RC20GF151J	81349	19	R12	RC20GF302J	81349	18	R12
RC20GF151J	81349	23	R1	RC20GF302J	81349	23	R2
RC20GF151J	81349	24	R19	RC20GF302J	81349	18	R17
RC20GF151J	81349	24	R20	RC20GF303J	81349	15	R21
RC20GF152J	81349	18	R14	RC20GF305J	81349	20	R11
RC20GF153J	81349	18	R25	RC20GF330J	81349	15	R10
RC20GF153J	81349	18	R28	RC20GF331J	81349	18	R23
RC20GF153J	81349	18	R29	RC20GF331J	81349	18	R31
RC20GF153J	81349	19	R11	RC20GF332J	81349	18	R31
RC20GF153J	81349	20	R7	RC20GF332J	81349	20	R19
RC20GF153J	81349	22	R1	RC20GF332J	81349	20	R17
RC20GF154J	81349	19	R5	RC20GF333J	81349	21	R12
RC20GF154J	81349	19	R6	RC20GF333J	81349	18	R32
RC20GF162J	81349	17	R2	RC20GF391J	81349	18	R18
RC20GF162J	81349	17	R12	RC20GF392J	81349	23	R12
RC20GF182J	81349	18	R25	RC20GF392J	81349	18	R33
RC20GF182J	81349	24	R14	RC20GF431J	81349	20	R8
RC20GF182J	81349	24	R17	RC20GF431J	81349	19	R14
RC20GF182J	81349	24	R18	RC20GF433J	81349	15	R24
RC20GF202J	81349	18	R26	RC20GF470J	81349	15	R24
RC20GF202J	81349	22	R5	RC20GF471J	81349	24	R25
RC20GF202J	81349	23	R16	RC20GF471J	81349	24	R3
RC20GF203J	81349	19	R3	RC20GF471J	81349	15	R5
RC20GF203J	81349	15	R8	RC20GF472J	81349	17	R5
RC20GF203J	81349	20	R3	RC20GF472J	81349	17	R10
RC20GF203J	81349	20	R5	RC20GF472J	81349	22	R6
RC20GF203J	81349	22	R11	RC20GF472J	81349	22	R24
RC20GF203J	81349	23	R23	RC20GF472J	81349	22	R17
TC20GF203J	81349	24	R3	RC20GF473J	81349	22	R18
RC20GF220J	81349	18	R11	RC20GF473J	81349	23	R18
RC20GF220J	81349	20	R9	RC20GF474J	81349	23	R21
RC20GF220J	81349	20	R21	RC20GF474J	81349	23	R21
RC20GF221J	81349	20	R26	RC20GF474J	81349	23	R24
RC20GF221J	81349	19	R17	RC20GF511J	81349	15	R30
RC20GF221J	81349	20	R20	RC20GF511J	81349	19	R22
RC20GF222J	81349	19	R18	RC20GF511J	81349	22	R23
RC20GF222J	81349	22	R9	RC20GF512J	81349	18	R22
RC20GF222J	81349	23	R6	RC20GF512J	81349	18	R24
RC20GF223J	81349	18	R20	RC20GF512J	81349	19	R13
RC20GF223J	81349	18	R21	RC20GF512J	81349	19	R16
RC20GF223J	81349	19	R1	RC20GF512J	81349	19	R20
RC20GF223J	81349	19	R6	RC20GF512J	81349	19	R21
RC20GF223J	81349	22	R3	RC20GF512J	81349	19	R23
RC20GF223J	81349	23	R9	RC20GF512J	81349	19	R25
RC20GF240J	81349	24	R6	RC20GF512J	81349	24	R8
RC20GF240J	81349	24	R7	RC20GF512J	81349	24	R9
RC20GF242J	81349	15	R23	RC20GF513J	81349	23	R4
RC20GF242J	81349	15	R34	RC20GF513J	81349	23	R5
RC20GF242J	81349	20	R6	RC20GF561J	81349	15	R22
				RC20GF561J	81349	15	R33
				RC20GF561J	81349	23	R11
				RC20GF562J	81349		R27
				RC20GF562J	81349		R38

REFERENCE NO.	MFR CODE	FIG. NO.	ITEM NO.		REFERENCE NO.	MFR CODE	FIG. NO.	ITEM NO.
RC20GF562J	81349	15	R38	ST114	96238	21	Q2	
RC20GF562J	81349	20	R14	ST114	96238	22	Q1	
RC20GF562J	81349	22	R28	ST114	96238	22	Q2	
RC20GF562J	81349	23	R13	ST114	96238	22	Q3	
RC20GF563J	81349	17	R16	ST114	96238	22	Q4	
RC20GF621J	81349	15	R39	ST114	96238	22	C8	
RC20GF621J	81349	21	R1	ST114	96238	23	Q1	
RC20GF621J	81349	21	R14	ST114	96238	23	Q2	
RC20GF621J	81349	22	R2	ST114	96238	23	Q3	
RC20GF621J	81349	23	R14	ST114	96238	23	Q4	
RC20GF622J	81349	22	R8	ST114	96238	23	Q5	
RC20GF623J	81349	21	R6	ST114	96238	24	Q2	
RC20GF621J	81349	15	R25	ST118	96238	20	Q4	
RC20GF681J	81349	15	R35	ST118	96238	22	Q5	
RC20GF681J	81349	23	R22	ST118	96238	22	Q7	
RC20GF682J	81349	18	R19	ST124	96238	15	Q4	
RC20GF682J	81349	20	R12	ST124	96238	15	Q6	
RC20GF682J	81349	23	R3	ST124	96238	15	Q8	
RC20GF683J	81349	18	R9	ST124	96238	15	Q9	
RC20GF751J	81349	22	R14	ST124	96238	17	Q4	
RC20GF752J	81349	22	R13	ST124	96238	21	Q3	
RC20GF753J	81349	21	R9	ST124	96238	22	Q3	
RC20GF811J	81349	21	R13	ST130	96238	5	Q3	
RC20GF822J	81349	19	R15	ST208	96238	19	Q2	
RC20GF823J	81349	15	R1	YCI-8	96214	19	RT1	
RC20GF823J	81349	15	R7	YCI-8	96214	19	RT2	
RC20GF823J	81349	15	R13	TE1135	56289	15	C8	
RC20GF823J	81349	15	R26	TE1135	56289	15	C13	
RC20GF23J	81349	15	R36	TE1148	56289	18	C12	
RC20GF823J	81349	17	R3	TE1148	56289	19	C7	
RC20GF823J	81349	17	R8	TE1148	56289	19	C9	
RC20GF823J	81349	17	R13	TE1148	56289	19	C10	
RC20GF911J	81349	24	R2	TE1149	56289	17	C8	
RC20GF912J	81349	24	R4	TE1149	56289	22	C1	
RC20GF912J	81349	24	R5	TE1149	56289	22	C10	
RC32GF102J	81349	24	R24	TE1152	56289	22	C3	
RC32GF152J	81349	24	R13	TE1152	56289	22	C4	
RC32GF152J	81349	24	R14	TE1152	56289	22	C5	
RC32GF472J	81349	24	R11	TE1152	56289	22	C7	
RC32GF621J	81349	24	R23	TE1155	56289	15	C1	
RC42GF151J	81349		R28	TE1155	56289	15	C2	
RC42GF151J	81349		R29	TE1155	56289	15	C3	
RC42GF271J	81349	24	R2	TE1155	56289	15	C5	
RN7081003F	81349	18	R5	TE1155	56289	15	C7	
RN7081003F	81349	17	R7	TE1155	56289	15	C9	
RN7083012F	81349	18	R4	TE1155	56289	15	C11	
RN7083012F	81349	18	R6	TE1155	56289	15	C12	
RV4NAYS502A	81349	18	R1	TE1155	56289	15	C14	
SP52	81095	15	T5	TE1155	56289	15	C15	
SP66	81095	15	T2	TE1155	56289	15	C16	
SP66	81095	15	T3	TE1155	56289	17	C4	
SP66	81095	15	T4	TE1155	56289	17	C7	
SP66	81095	15	T6	TE1155	56289	18	C15	
SP66	81095	15	T7	TE1155	56289	20	C1	
SP66	81095	17	T1	TE1155	56289	26	C12	
ST113	96238		Q1	TE1155	56289	21	C4	
ST114	00348	20	Q1	TE1155	56289	22	C6	
ST114	00348	20	Q2	TE1155	56289	23	C1	
ST114	00348	20	Q3	TE1157	56289	21	C2	
ST114	00348	20	Q5	TE1204	56289	22	C12	
ST114	00348	20	Q6	TE1205	56289	22	C2	
ST114	96238	15	Q1	TE1206	56289	15	C10	
ST114	96238	15	Q2	TE1206	56289	18	C11	
ST114	96238	15	Q5	TE1207	56289	18	C9	
ST114	96238	15	Q7	TE1211	56289	17	C9	
ST114	96238	17	Q1	TE1211	56289	20	C13	
ST114	96238	17	Q2	TE1211	56289	21	C8	
ST114	96238	17	Q3	TE1211	56289	24	C11	
ST114	96238	17	Q5	TE1305	56289	24	C3	
ST114	96238	18	Q1	TE1305	56289	24	C4	
ST114	96238	18	Q2	TE1306	56289	24	C10	
ST114	96238	18	Q3	T1600C	96214	15	CR1	
ST114	96238	18	Q4	T1600C	96214	15	CR2	
ST114	96238	18	Q5	T1600C	96214	15	CR3	
ST11	96238	18	Q6	T1600C	96214	15	CR4	
ST114	96238	19	Q1	T1600C	96214	15	CR5	
ST114	96238	19	Q3	T1600C	96214	15	CR6	
ST114	96238	19	Q4	T1600C	96214	15	CR7	
ST114	96238	19	Q5	T1600C	96214	15	CR8	
ST114	96238	21	Q1	T1600C	96214	21	CR1	

SECTION VII

TM 11-5805-347-24P-

REFERENCE NO.	MFR CODE	FIG. NO.	ITEM NO.	REFERENCE NO.	MFR CODE	FIG. NO.	ITEM NO.
T1600C	96214	21	CR2	1N270	81349	22	CR1
T1600C	96214	21	CR3	1N270	81349	22	CR2
T1600C	96214	21	CR4	1N270	81349	22	CR3
TL154-2C24VDC	02288	15	K7	1N270	81349	22	CR4
TL154-2C24VDC	02288	15	K10	1N270	81349	22	CR5
TL154-2C48VDC	02288	15	K11	1N270	81349	23	CR1
TL154-2C48VDC	02288	15	K12	1N270	81349	23	CR2
TL154-4C24VDC	02288	15	K3	1N462	81867	15	CR9
TL154-4C24VDC	02288	15	K6	1N462	81867	15	CR10
TL154-4C24VDC	02288	15	K8	1N462	81867	15	CR11
TL154-4C48VDC	02288	15	K9	1N462	81867	15	CR12
TS10	74861		XC1	1N462	81867	18	CR1
TS10	74861		XC2	1N462	81867	18	CR2
TS101P01	81349		XX1	1N462	81867	20	CR1
TS101P01	81349		XX5	13004	82389		
TS5	74861		XC5	138865A3LE	78947		
TS5	74861		XC6	1626	07388	19	L1
WMF1P1E	14655	20	C14	1626	07388	19	L2
WMF1P1E	14655	21	C5	2A04Z160TGSIL	78277	15	K1
WMF1P1E	14655	22	C11	2VH221AB3	05574	15	J1
WMF1P1E	14655	23	C2	2VH221AB3	05574	15	J2
WMF1P1E	14655	23	C3	2VH221AB3	05574	15	J3
WMF1P1E	14655	23	C4	2VH221AB3	05574	15	J4
WMF1P1E	14655	23	C4	2VH221AB3	05574	15	J5
WMF1P22E	14655	15	C4	2VH221AB3	05574	15	J6
WMF1P22E	14655	15	C6	2VH221AB3	05574	15	J7
WMF1P22E	14655	19	C1	2VH221AB3	05574	15	J8
WMF1P22E	14655	20	C2	2VH221AB3	05574	15	J9
WMF1P47	14655	21	C1	2VH221AB3	05574	15	J10
WMF1P47	14655	21	C3	2VH221AB3	05574		J1
WMF1P47	14655	21	C6	22KNCC2500GGSP	78277	15	K2
WMF1P47	14655	21	C7	22KNCC2500GGSP	78277	15	K4
WMF1S22E	14655	20	C4	275-1-102	80294		A1
WMF1S33	14655	17	C1	275-1-102	80294	21	R4
WMF1S33	14655	17	C3	275-1-102	80294	23	R15
WMF1S33	14655	17	C5	275-1-103	80294	15	R4
WMF1S33	14655	23	C11	275-1-103	80294	18	R2
WMF1S68E	14655	17	C2	275-1-103	80294	23	R7
WMF1S68E	14655	20	C3	275-1-502	80294	17	R1
WMF11P1E	14655	18	C7	275-1-502	80294	20	R18
WMF11P1E	14655	18	C8	275-1-502	80294	22	R12
WMF11P1E	14655	19	C6	275-1-502	80294	24	R12
WMF11P1E	14655	19	C10	276-1-105	80294	17	R22
WMF2W2E	14655		C7	30055-1	02288		XX7
WMF2W2E	14655		C8	30055-1	02288		XX11
WMF2W2E	14655		C9	30055-1	02288		XX12
WMF2W2E	14655		C12	30055-1	02288		XX13
WMF2W2E	14655		C13	30055-2	02288		XX3
WMF2W2E	14655		C14	30055-2	02288		XX6
WMF1S33	14655	22	C8	30055-2	02288		XX8
WMF1S33	14655	22	C9	30055-2	02288		XX9
05RTTK500	74861	15	C1	30055-2	02288		XX10
05RTTK500	74861	15	C2	313-250	75915	15	
1AD552	14655	19	C2	324004	75915		
1AD552	14655	19	C4	342004	75915		XF1
1M10Z5	81223	24	CR5	342004SA2	75915	15	
1M18Z5	81223	24	CR6	242004SA2	75915	15	K5
1N2482	81867	24	CR1	41R0250FKBSL	78277	15	
1N2482	81867	24	CR2	47	24446	15	
1N2482	81867	24	CR3	52RTTK500	74861	15	C5
1N2482	81867	24	CR4	52RTTK500	74861	15	C6
1N270	81349		CR7	599-15-2004	75382		T82
1N270	81349		CR8	70-4-2G	49956	1	
1N270	81349		CR9	70-5-1G	49956	1	
1N270	81349	17	CR10	81410-112	72619		DS1
1N270	81349	17	CR2	81410-115	66987		DS5
Te1N270xt	81349	21	CR5	81410-116	06987		DS6
1N270	81349	21	CR6				

By Order of the Secretary of the Army:

Official:

VERNE L. BOWERS
*Major General, United States Army,
The Adjutant General.*

FRED C. WEYAND
*General, United States Army,
Chief of Staff.*

Distribution:

Active Army:

USASA (2)
Dir of Trans (1)
COE (2)
TSG (1)
USAARENBD (1)
AMC (1)
TRADOC (2)
ARADCOM (2)
ARADCOM Rgn (2)
OS Maj Comd (4)
LOGCOMDS (3)
MICOM (2)
TECOM (2)
USACC (4)
MDW (1)
Armies (2)
Corps (2)
HISA (Ft Monmouth) (43)
Svc Colleges (1)
USASESS (5)
USAADS (2)
USAFAS (2)
USAARMS (2)
USAIS (2)
USAES (2)
USAINTC (2)
WRAMC (1)
ATS (1)

Fort Gordon (10)
Fort Huachuca (10)
WSMR (1)
USAMB (10)
Fort Carson (5)
Ft Richardson (ECOM Ofc) (2)
Army Dep (1) except
 LBAD (14)
 SAAD (30)
 TOAD (14)
 ATAD (10)
USA Dep (2)
Sig Sec USA Dep (2)
Sig Dep (2)
Sig FLDMS (1)
USAERDAA (1)
USAERDAW (1)
MAAG (1)
USARMIS (1)
Units org under fol TOE
 (1 copy each unit):
 11-97
 11-98
 11-117
 11-302
 11-500(AA-AC)
 29-134
 29-136

NG: None.

USAR: None.

For explanation of abbreviations used, see AR 310-50.

DEPARTMENT OF THE ARMY
US ARMY AG PUBLICATIONS CENTER
1655 WOODSON ROAD
ST. LOUIS, MISSOURI 63114

OFFICIAL BUSINESS
PENALTY FOR PRIVATE USE \$300

POSTAGE AND FEES PAID
DEPARTMENT OF THE ARMY
DOD 314

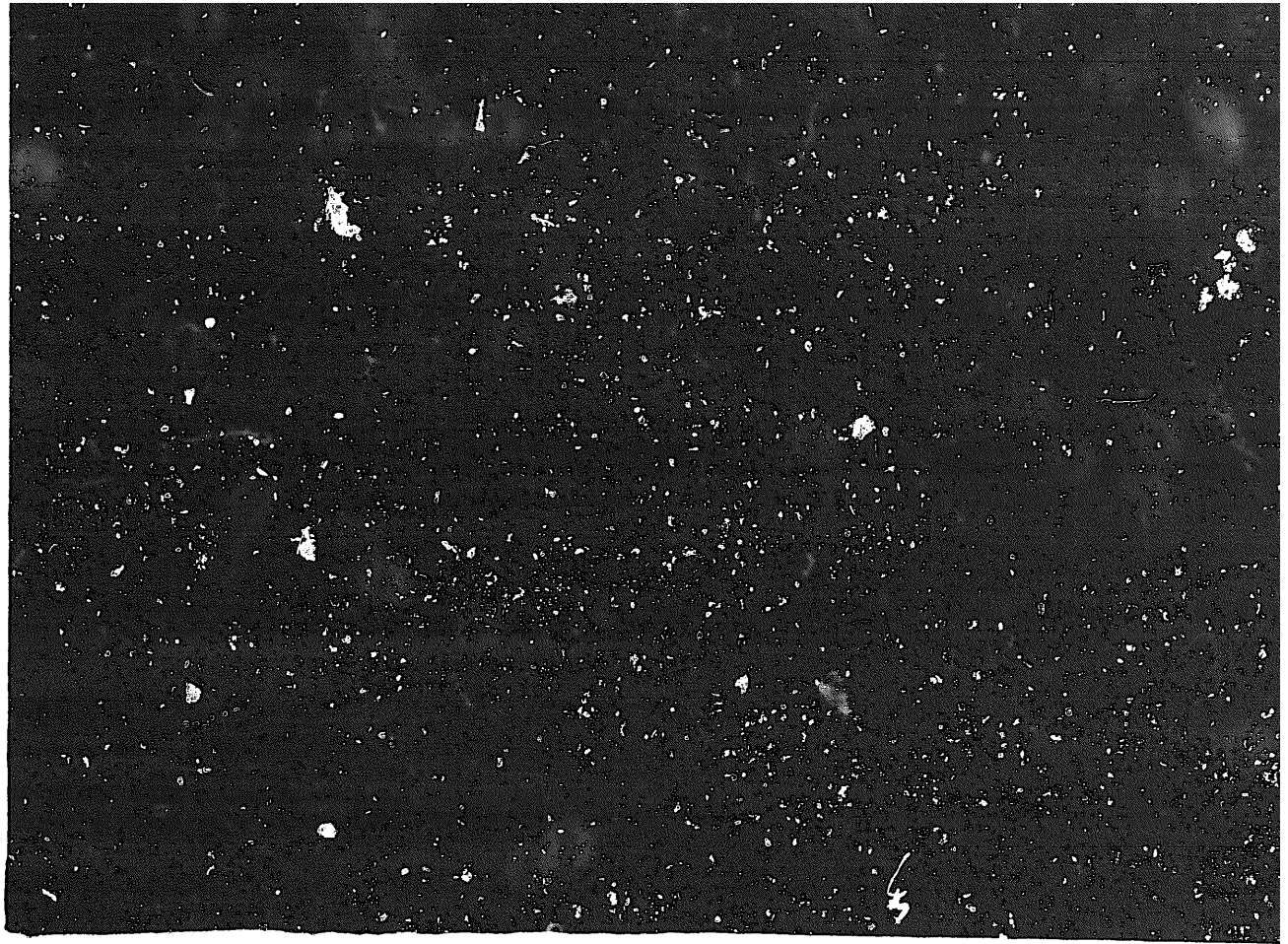


END

10-20-82

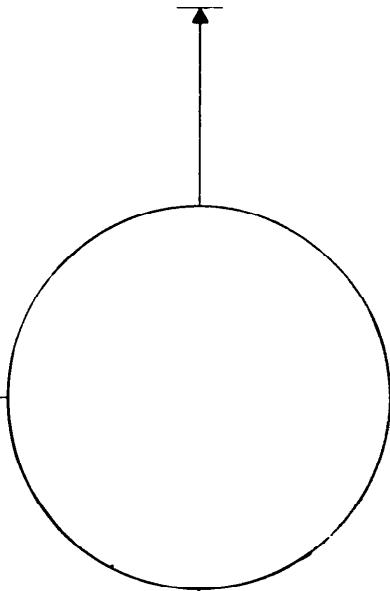
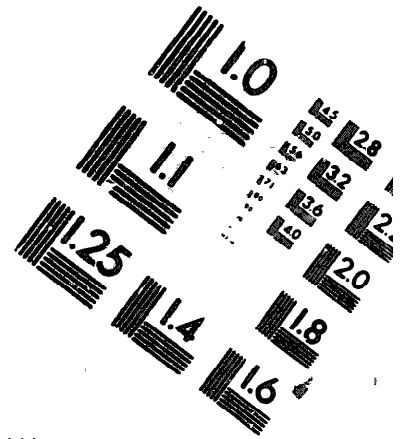
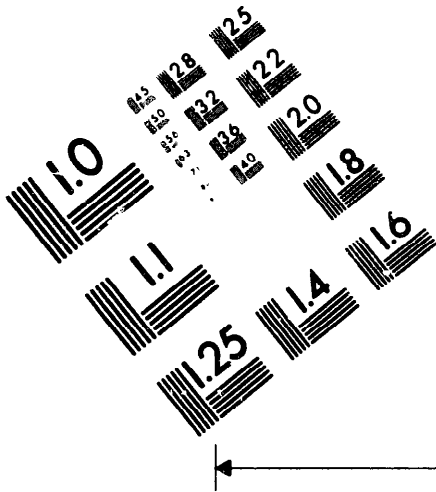
DATE





DEPARTMENT OF THE ARMY

MICROFORM TEST TARGET



150 MM

1.0 mm (e= 0.1 mm)

ABCDEFGHIJKLMN OPQRSTUVWXYZ 1234567890
abcdefghijklmnopqrstuvwxyz \$%&' /%# 1/2 1/4 3/4 — = + x & @ *

1.5 mm (e= 1.09 mm)

ABCDEFGHIJKLMN OPQRSTUVWXYZ 1234567890
abcdefghijklmnopqrstuvwxyz \$%&' /%# 1/2 1/4 3/4 — = + x & @ *

2.0 mm (e= 1.37 mm)

ABCDEFGHIJKLMN OPQRSTUVWXYZ
abcdefghijklmnopqrstuvwxyz
1234567890 \$%&' /%# 1/2 1/4 3/4 — = + x & @ *

2.5 mm (e= 1.77 mm)

ABCDEFGHIJKLMN OPQRSTUVWXYZ
abcdefghijklmnopqrstuvwxyz
1234567890 \$%&' /%# 1/2 1/4 3/4 — = + x & @ *

1.0 mm (e= 0.1 mm)

ABCDEFGHIJKLMN OPQRSTUVWXYZ 1234567890
abcdefghijklmnopqrstuvwxyz \$%&' /%# 1/2 1/4 3/4 — = + x & @ *

1.5 mm (e= 1.09 mm)

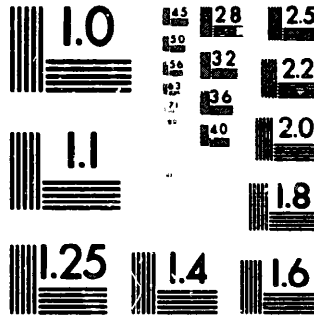
ABCDEFGHIJKLMN OPQRSTUVWXYZ 1234567890
abcdefghijklmnopqrstuvwxyz \$%&' /%# 1/2 1/4 3/4 — = + x & @ *

2.0 mm (e= 1.37 mm)

ABCDEFGHIJKLMN OPQRSTUVWXYZ
abcdefghijklmnopqrstuvwxyz
1234567890 \$%&' /%# 1/2 1/4 3/4 — = + x & @ *

2.5 mm (e= 1.77 mm)

ABCDEFGHIJKLMN OPQRSTUVWXYZ
abcdefghijklmnopqrstuvwxyz
1234567890 \$%&' /%# 1/2 1/4 3/4 — = + x & @ *



200 MM

250 MM

